

**RIVERBEND WEST  
COMMUNITY DEVELOPMENT DISTRICT**

**AGENDA PACKAGE**

**Monday, August 18, 2025, at 6:00 p.m.  
Meeting to be held at:**

**SouthShore Regional Library  
15816 Beth Shields Way  
Ruskin, FL 33573**



313 Campus Street  
Celebration, FL 34747  
407-566-1935

# Riverbend West Community Development District

## Board of Supervisors

Rebecca Hartsook, Chairperson  
Joe Collins, Vice Chairperson  
Clayton Patmagrian, Assistant Secretary  
Laura Ferreira, Assistant Secretary  
Shalonda Antoine, Assistant Secretary

## Staff:

Kristee Cole, District Manager  
John Vericker, District Counsel  
Phil Chang, District Engineer  
Gabe Montagna, Field Services  
Epi Carvajal, Pine Lake Nursery  
Jason Jaszczak, Advanced Aquatic

## Meeting Agenda

Monday, August 18, 2025 – 6:00 p.m.

---

1. **Call to Order and Roll Call**
2. **Adoption of the Agenda**
3. **Audience Comments on Agenda Items – Three- (3) Minute Time Limit**
4. **Staff Reports**
  - A. Aquatics Report for July 2025..... Page 3
  - B. Field Inspection Report for July 2025.....Page 23
  - C. Landscape Update
  - D. District Counsel
  - E. District Engineer
  - F. District Manager
5. **Business Items**
  - A. Public Hearing on the Final Budget for Fiscal Year 2025-2026 and Levying the O&M Assessment
    1. Consideration of Resolution 2025-04, Adopting the Fiscal Year 2025-2026 Final Budget .....Page 27
    2. Consideration of Resolution 2025-05, Levying the O&M Assessment ...Page 44
  - C. Consideration of Resolution 2025-06, Adopting the Fiscal Year 2025-2026 Meeting Schedule .....Page 47
  - D. Consideration of Resolution 2025-07, Adopting the Goals and Objectives .Page 49
  - E. Consideration of Resolution 2025-08, Designating Officers .....Page 54
6. **Business Administration**
  - A. Consideration of Regular Meeting Minutes from June 16, 2025.....Page 55
  - B. Review of June and July 2025 Check Registers .....Page 57
7. **Supervisor Requests**
8. **Adjournment**

*The next meeting is scheduled for Monday, September 15, 2025, at 6:00 p.m.*

## District Office:

313 Campus Street  
Celebration FL 34747  
407-566-1935

<https://www.riverbendwestcdd.com/>

## Meeting Location:

SouthShore Regional Library  
15816 Beth Shields Way  
Ruskin, FL 33573



# **Riverbend West Community Development District Waterway Inspection Report**

---

**Reason for Inspection:**  
Quality Assurance

**Inspection Date:**  
7/11/2025

**Prepared for:**  
Riverbend West  
Community Development District

**Prepared by:**  
Jacob Adams, Project Manager and Biologist  
Carly Centnarowicz, Aquatic Biologist

[www.AdvancedAquatic.com](http://www.AdvancedAquatic.com)  
[lakes@advancedaquatic.com](mailto:lakes@advancedaquatic.com)

292 S. Military Trail, Deerfield Beach, FL 33442

Locations in: Deerfield Beach, Fort Myers, Port St. Lucie, and Clearwater/Tampa  
1-800-491-9621



## TABLE OF CONTENTS

### Site Assessments

#### Phase I & II

|                 |   |
|-----------------|---|
| Sites 1-2 ..... | 2 |
| Sites 3-4 ..... | 3 |
| Sites 5-6 ..... | 4 |
| Sites 7-8 ..... | 5 |
| Sites 9.....    | 6 |

#### Phase III

|                 |   |
|-----------------|---|
| Sites 1-2 ..... | 7 |
|-----------------|---|

|   |   |
|---|---|
| Management Summary/Recommendations..... | 8 |
|---|---|

|                               |   |
|-------------------------------|---|
| Site Map – Phase I & II ..... | 9 |
|-------------------------------|---|

|                            |    |
|----------------------------|----|
| Site Map – Phase III ..... | 10 |
|----------------------------|----|



## Site Assessments

### Pond 1

#### Comments:

Site Looks Good

Pond 1 looks great. The Gulf Spike Rush continues to look healthy and thrive and is free from invasive growth. No issues were observed with algae, submersed weeds, or shoreline weeds.



### Pond 2

#### Comments:

Site Looks Good

Pond 2 continues to look great. No issues were observed with algae, submersed weeds, or shoreline weeds. The open water area and the shoreline perimeter look great.



[www.AdvancedAquatic.com](http://www.AdvancedAquatic.com)  
[lakes@advancedaquatic.com](mailto:lakes@advancedaquatic.com)

292 S. Military Trail, Deerfield Beach, FL 33442

Locations in: Deerfield Beach, Fort Myers, Port St. Lucie, and Clearwater/Tampa  
1-800-491-9621





## Site Assessments

### Wetland Buffer 3

#### Comments:

Normal Growth Observed

Recent growth of Primrose, Torpedograss, Alligator weed, Pennywort, and Brazilian Pepper were observed. Outflow structure for this buffer has experienced a recent growth as well. This area and the invasive growth in the buffer zone will be targeted for treatment.



### Pond 4

#### Comments:

Site Looks Good

The Gulf Spike Rush is continuing to spread around the shoreline areas. This is great for the native aquatic plant. The shoreline perimeter was recently treated for shoreline weeds and positive results were observed. The water level has also elevated and is currently at a normal level.



[www.AdvancedAquatic.com](http://www.AdvancedAquatic.com)  
[lakes@advancedaquatic.com](mailto:lakes@advancedaquatic.com)

292 S. Military Trail, Deerfield Beach, FL 33442

Locations in: Deerfield Beach, Fort Myers, Port St. Lucie, and Clearwater/Tampa

1-800-491-9621



## Site Assessments

### Ditch 5

#### Comments:

Site Looks Good

Ditch 5 looks good. A minor amount of algae was observed, this growth is normal and can be expected this time of year. This site is clear from vegetation to allow water to flow freely.



### Ditch 6N

#### Comments:

Site Looks Good

Ditch 6n looks good. Site is clear of vegetation so that water can flow freely. No issues were observed. Torpedograss was recently treated and positive results were observed.



[www.AdvancedAquatic.com](http://www.AdvancedAquatic.com)  
[lakes@advancedaquatic.com](mailto:lakes@advancedaquatic.com)

292 S. Military Trail, Deerfield Beach, FL 33442

Locations in: Deerfield Beach, Fort Myers, Port St. Lucie, and Clearwater/Tampa  
1-800-491-9621





## Site Assessments

### Ditch 6S

#### Comments:

Site Looks Good

Ditch 6s looks good. Site is clear of vegetation so that water can flow freely. No issues were observed. Torpedograss was recently treated and positive results were observed.



### Ditch 7

#### Comments:

Site Looks Good

Ditch 7 looks great. Previous treatments had focus on the vegetation growth in this ditch and positive results were observed and water can freely move through this system.



[www.AdvancedAquatic.com](http://www.AdvancedAquatic.com)  
[lakes@advancedaquatic.com](mailto:lakes@advancedaquatic.com)

292 S. Military Trail, Deerfield Beach, FL 33442

Locations in: Deerfield Beach, Fort Myers, Port St. Lucie, and Clearwater/Tampa

1-800-491-9621





## Site Assessments

### Ditch 8

#### Comments:

Site Looks Good

Ditch 8 looks good. Site is clear of vegetation so that water is flowing freely. No issues were observed.



[www.AdvancedAquatic.com](http://www.AdvancedAquatic.com)

[lakes@advancedaquatic.com](mailto:lakes@advancedaquatic.com)

292 S. Military Trail, Deerfield Beach, FL 33442

Locations in: Deerfield Beach, Fort Myers, Port St. Lucie, and Clearwater/Tampa

1-800-491-9621



## Site Assessments

### Pond 1

#### Comments:

Normal Growth Observed

New shoreline weed growth was observed around the perimeter of this pond. This new growth will be targeted on the next visit. No other issues were observed.



### Pond 2

#### Comments:

Treatment In Progress

A minor band, in small patches around the shoreline perimeter were observed and are currently decomposing. This pond will be monitored for any regrowth and treated if new growth is observed. No other issues were observed.



[www.AdvancedAquatic.com](http://www.AdvancedAquatic.com)  
[lakes@advancedaquatic.com](mailto:lakes@advancedaquatic.com)

292 S. Military Trail, Deerfield Beach, FL 33442

Locations in: Deerfield Beach, Fort Myers, Port St. Lucie, and Clearwater/Tampa

1-800-491-9621





Map



[www.AdvancedAquatic.com](http://www.AdvancedAquatic.com)  
[lakes@advancedaquatic.com](mailto:lakes@advancedaquatic.com)

292 S. Military Trail, Deerfield Beach, FL 33442

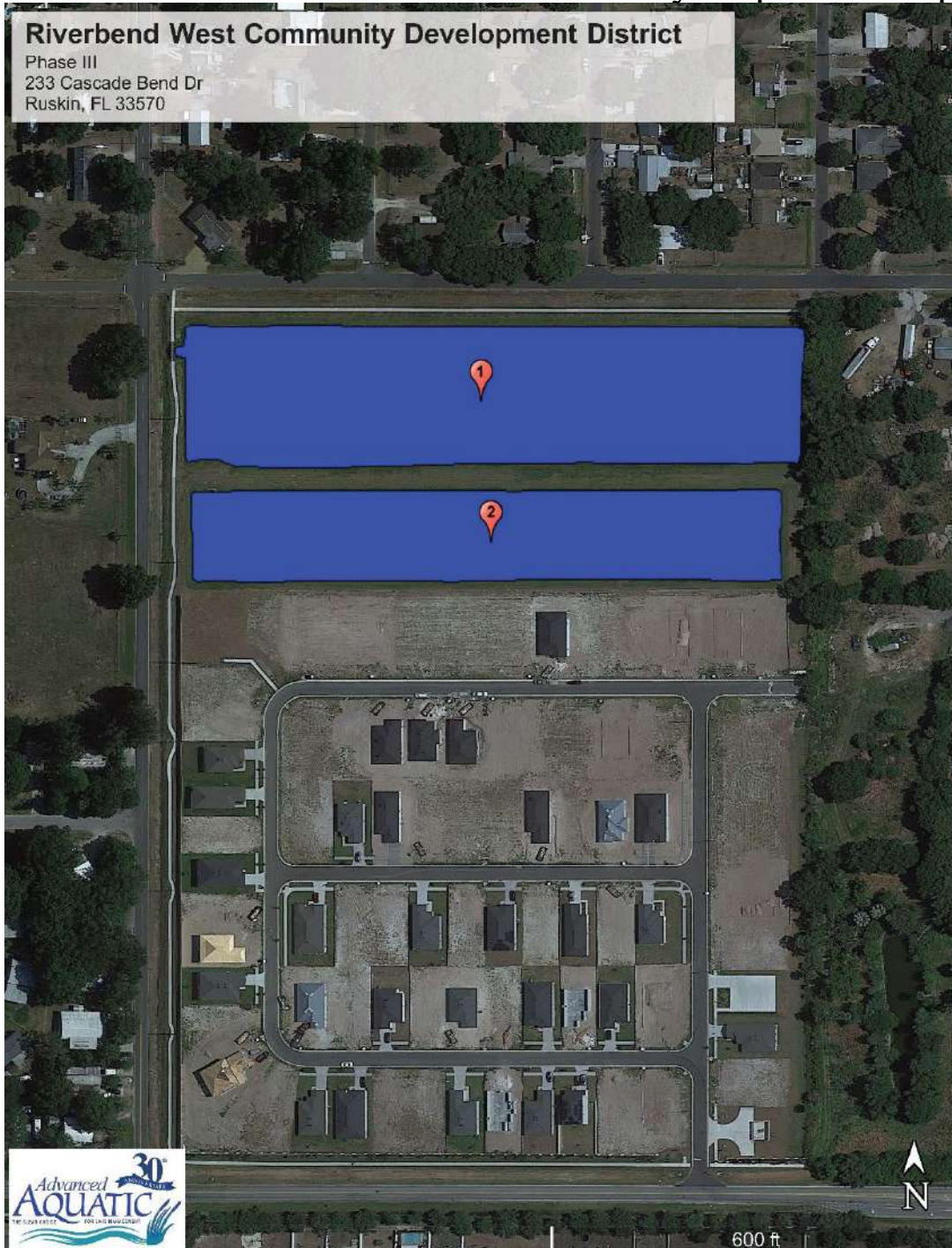
Locations in: Deerfield Beach, Fort Myers, Port St. Lucie, and Clearwater/Tampa

1-800-491-9621





## Waterway Inspection Report | Page 9



[www.AdvancedAquatic.com](http://www.AdvancedAquatic.com)

[lakes@advancedaquatic.com](mailto:lakes@advancedaquatic.com)

292 S. Military Trail, Deerfield Beach, FL 33442

Locations in: Deerfield Beach, Fort Myers, Port St. Lucie, and Clearwater/Tampa

1-800-491-9621





# **Riverbend West Community Development District Waterway Inspection Report**

---

**Reason for Inspection:**  
Quality Assurance

**Inspection Date:**  
8/7/2025

**Prepared for:**  
Riverbend West  
Community Development District

**Prepared by:**  
Jacob Adams, Project Manager & Biologist

[www.AdvancedAquatic.com](http://www.AdvancedAquatic.com)  
[lakes@advancedaquatic.com](mailto:lakes@advancedaquatic.com)

292 S. Military Trail, Deerfield Beach, FL 33442  
Locations in: Deerfield Beach, Fort Myers, Port St. Lucie, and Clearwater/Tampa  
1-800-491-9621



## TABLE OF CONTENTS

### Site Assessments

#### Phase I & II

|                 |   |
|-----------------|---|
| Sites 1-2 ..... | 2 |
| Sites 3-4 ..... | 3 |
| Sites 5-6 ..... | 4 |
| Sites 7-8 ..... | 5 |
| Sites 9.....    | 6 |

#### Phase III

|                 |   |
|-----------------|---|
| Sites 1-2 ..... | 7 |
|-----------------|---|

|   |   |
|---|---|
| Management Summary/Recommendations..... | 8 |
|---|---|

|                               |   |
|-------------------------------|---|
| Site Map – Phase I & II ..... | 9 |
|-------------------------------|---|

|                            |    |
|----------------------------|----|
| Site Map – Phase III ..... | 10 |
|----------------------------|----|

[www.AdvancedAquatic.com](http://www.AdvancedAquatic.com)

[lakes@advancedaquatic.com](mailto:lakes@advancedaquatic.com)

292 S. Military Trail, Deerfield Beach, FL 33442

Locations in: Deerfield Beach, Fort Myers, Port St. Lucie, and Clearwater/Tampa

1-800-491-9621



## Waterway Inspection Report | Page 2

### Site Assessments

#### Pond 1

##### Comments:

Site Looks Good

Pond 1 looks great. The Gulf Spike Rush continues to look healthy and thrive and is free from invasive growth. No issues were observed with algae, submersed weeds, or shoreline weeds



#### Pond 2

##### Comments:

Site Looks Good

Pond 2 continues to look great. No issues were observed with algae, submersed weeds, or shoreline weeds. The open water area and the shoreline perimeter look great.



[www.AdvancedAquatic.com](http://www.AdvancedAquatic.com)  
[lakes@advancedaquatic.com](mailto:lakes@advancedaquatic.com)

292 S. Military Trail, Deerfield Beach, FL 33442

Locations in: Deerfield Beach, Fort Myers, Port St. Lucie, and Clearwater/Tampa  
1-800-491-9621





## Site Assessments

### Wetland Buffer 3

#### Comments:

Normal Growth Observed

Recent growth of Primrose, Torpedograss, Alligator weed, Pennywort, and Brazilian Pepper were observed in the buffer area. These new growths will be targeted in the buffer area.



### Pond 4

#### Comments:

Site Looks Good

The shoreline perimeter was recently treated for shoreline weeds and positive results were observed. Pond 4 continues to look great. No issues were observed.



[www.AdvancedAquatic.com](http://www.AdvancedAquatic.com)  
[lakes@advancedaquatic.com](mailto:lakes@advancedaquatic.com)

292 S. Military Trail, Deerfield Beach, FL 33442

Locations in: Deerfield Beach, Fort Myers, Port St. Lucie, and Clearwater/Tampa  
1-800-491-9621





## Site Assessments

### Ditch 5

#### Comments:

Site Looks Good

Ditch 5 looks good. This site is clear from vegetation to allow water to flow freely. Trash was collected during previous visits.



### Ditch 6N

#### Comments:

Site Looks Good

Ditch 6n looks good. Site is clear of vegetation so that water can flow freely. No issues were observed. Trash was collected during previous visits.



[www.AdvancedAquatic.com](http://www.AdvancedAquatic.com)  
[lakes@advancedaquatic.com](mailto:lakes@advancedaquatic.com)

292 S. Military Trail, Deerfield Beach, FL 33442

Locations in: Deerfield Beach, Fort Myers, Port St. Lucie, and Clearwater/Tampa

1-800-491-9621



## Site Assessments

### Ditch 6S

#### Comments:

Site Looks Good

Ditch 6s looks good. Site is clear of vegetation so that water can flow freely. No issues were observed. Trash was collected during previous visits.



### Ditch 7

#### Comments:

Site Looks Good

Ditch 7 looks great. Water can freely move through this system. Trash was collected during previous visits.



[www.AdvancedAquatic.com](http://www.AdvancedAquatic.com)  
[lakes@advancedaquatic.com](mailto:lakes@advancedaquatic.com)

292 S. Military Trail, Deerfield Beach, FL 33442

Locations in: Deerfield Beach, Fort Myers, Port St. Lucie, and Clearwater/Tampa

1-800-491-9621





## Site Assessments

### Ditch 8

#### **Comments:**

Site Looks Good

Ditch 8 looks good. Site is clear of vegetation so that water is flowing freely. No issues were observed. Trash was collected during previous visits.



[www.AdvancedAquatic.com](http://www.AdvancedAquatic.com)

[lakes@advancedaquatic.com](mailto:lakes@advancedaquatic.com)

292 S. Military Trail, Deerfield Beach, FL 33442

Locations in: Deerfield Beach, Fort Myers, Port St. Lucie, and Clearwater/Tampa

1-800-491-9621



## Site Assessments

### Pond 1

#### Comments:

Site Looks Good

The shoreline weed growth that was present during last month's inspection was treated and positive results have been observed. No issues were observed with algae, submersed weeds, or shoreline weeds.



### Pond 2

#### Comments:

Site Looks Good

The remaining Hydrilla is currently in a state of decomposition and minimal amounts remain. This Hydrilla will continue to decompose and is not an issue. No other issues were observed with algae or shoreline weeds.



[www.AdvancedAquatic.com](http://www.AdvancedAquatic.com)  
[lakes@advancedaquatic.com](mailto:lakes@advancedaquatic.com)

292 S. Military Trail, Deerfield Beach, FL 33442

Locations in: Deerfield Beach, Fort Myers, Port St. Lucie, and Clearwater/Tampa

1-800-491-9621





Map



[www.AdvancedAquatic.com](http://www.AdvancedAquatic.com)  
[lakes@advancedaquatic.com](mailto:lakes@advancedaquatic.com)

292 S. Military Trail, Deerfield Beach, FL 33442

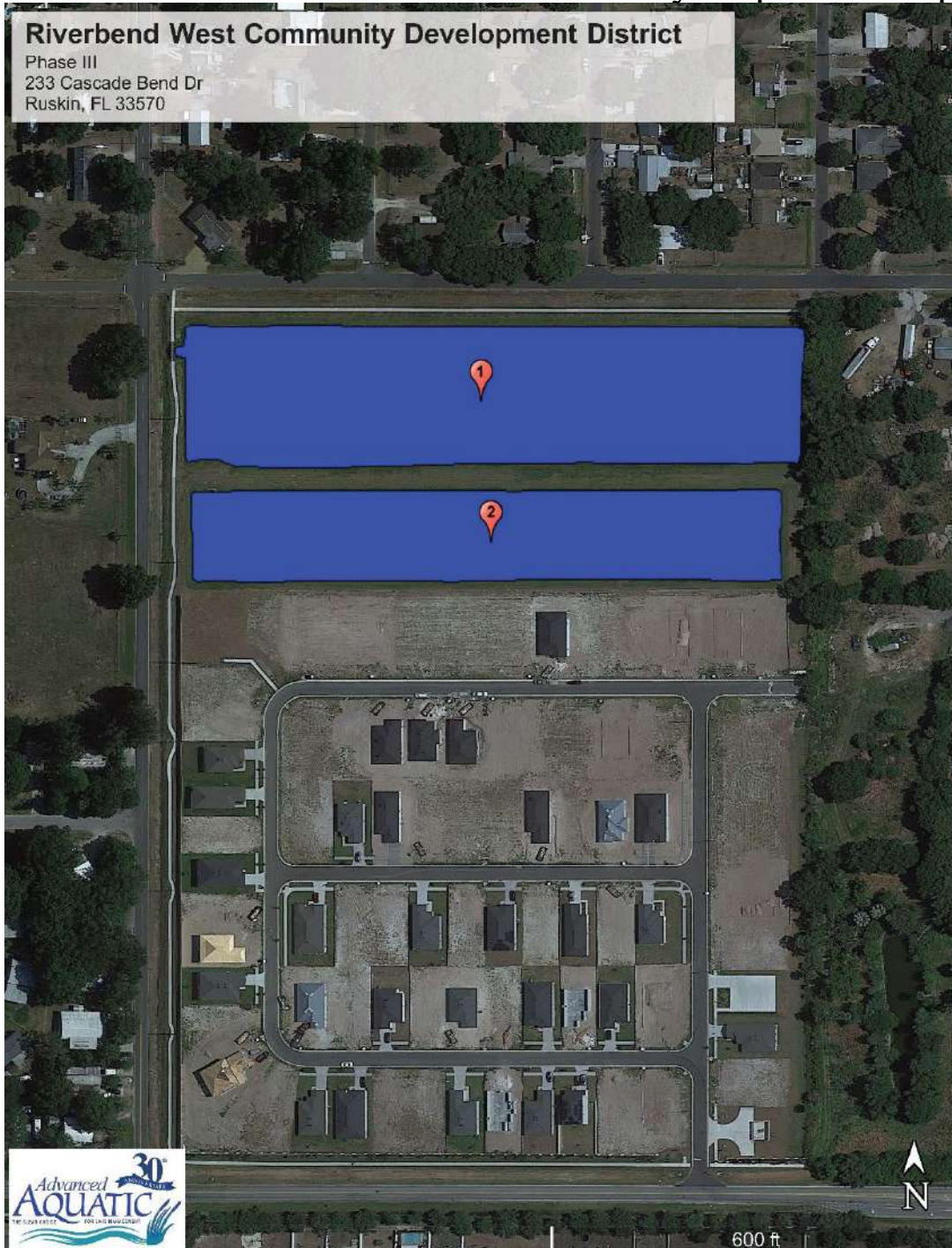
Locations in: Deerfield Beach, Fort Myers, Port St. Lucie, and Clearwater/Tampa

1-800-491-9621





## Waterway Inspection Report | Page 9



[www.AdvancedAquatic.com](http://www.AdvancedAquatic.com)

[lakes@advancedaquatic.com](mailto:lakes@advancedaquatic.com)

292 S. Military Trail, Deerfield Beach, FL 33442

Locations in: Deerfield Beach, Fort Myers, Port St. Lucie, and Clearwater/Tampa

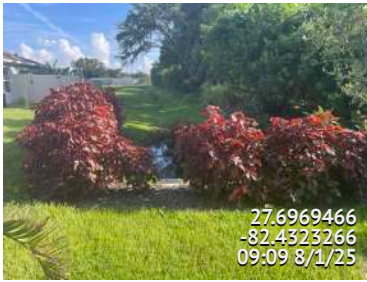
1-800-491-9621

# **RIVERBEND WEST CDD INSPECTION**

**Friday, August 1, 2025**

**Prepared For Board Of Directors**

**10 Items Identified**



### **Item 1- 206 Eagle Summit**

Assigned To District Manager  
Plants are looking great.

27.6969466  
-82.4323266  
09:09 8/1/25



### **Item 2-206 Eagle Summit**

Assigned To Advanced Aquatics  
Please have the crew clear this area from plant material.

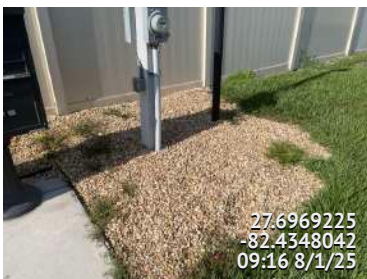
27.6971294  
-82.4323245  
09:10 8/1/25



### **Item 3- 206 Eagle Summit**

Assigned To Pine Lake Nursery  
Please have the crew cut some of the plant material back.

27.6968047  
-82.4323662  
09:13 8/1/25



### **Item 4- Mail Kiosk / Dog Park**

Assigned To Pine Lake Nursery  
Please have the crew treat the weeds throughout the rock beds.

27.6969225  
-82.4348042  
09:16 8/1/25





### Item 5- Pond 1

Assigned To Advanced Aquatics

Will continue to monitor for damages.



### Item 6-209 Cascade Bend

Assigned To District Manager

Fence vendor still needs to collect his materials, it's interfering with the cutting around the pond.



### Item 7- 209 Cascade Bend

Assigned To Advanced Aquatics

Can you have the crew remove this next service please.



### Item 8- Community Ditches

Assigned To District Manager

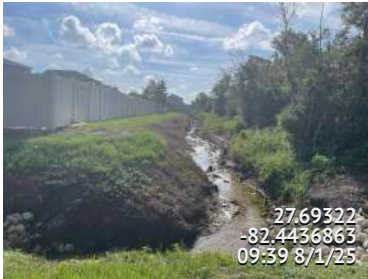
Ditches continue to look great after the clean up from Advanced Aquatics.



### Item 9- 7th ST SW

Assigned To District Manager

County's work has failed, it will end up in the ditch. A ticket will be submitted.



### Item 10- Ditch 7

Assigned To District Manager

Will continue to monitor ditch 7 for damages and erosion.

## RESOLUTION 2025-04

### **A RESOLUTION OF THE BOARD OF SUPERVISORS OF THE RIVERBEND WEST COMMUNITY DEVELOPMENT DISTRICT ADOPTING A BUDGET FOR THE FISCAL YEAR BEGINNING OCTOBER 1, 2025, AND ENDING SEPTEMBER 30, 2026; AND PROVIDING AN EFFECTIVE DATE.**

**WHEREAS**, the District Manager submitted, prior to June 15<sup>th</sup>, to the Board of Supervisors (“**Board**”) of the Riverbend West Community Development District (“**District**”) a proposed budget for the next ensuing budget year (“**Proposed Budget**”), along with an explanatory and complete financial plan for each fund, pursuant to the provisions of Sections 189.016(3) and 190.008(2)(a), Florida Statutes;

**WHEREAS**, the District filed a copy of the Proposed Budget with the local governing authorities having jurisdiction over the area included in the District at least 60 days prior to the adoption of the Proposed Budget pursuant to the provisions of Section 190.008(2)(b), Florida Statutes;

**WHEREAS**, the Board held a duly noticed public hearing pursuant to Section 190.008(2)(a), Florida Statutes;

**WHEREAS**, the District Manager posted the Proposed Budget on the District’s website at least 2 days before the public hearing pursuant to Section 189.016(4), Florida Statutes;

**WHEREAS**, the Board is required to adopt a resolution approving a budget for the ensuing fiscal year and appropriate such sums of money as the Board deems necessary to defray all expenditures of the District during the ensuing fiscal year pursuant to Section 190.008(2)(a), Florida Statutes; and

**WHEREAS**, the Proposed Budget projects the cash receipts and disbursements anticipated during a given time period, including reserves for contingencies for emergency or other unanticipated expenditures during the fiscal year.

### **NOW, THEREFORE, BE IT RESOLVED BY THE BOARD:**

#### **Section 1. Budget**

- a. That the Board has reviewed the Proposed Budget, a copy of which is on file with the office of the District Manager and at the District’s records office, and hereby approves certain amendments thereto, as shown below.
- b. That the Proposed Budget as amended by the Board attached hereto as **Exhibit A**, is hereby adopted in accordance with the provisions of Section 190.008(2)(a), Florida Statutes, and incorporated herein by reference; provided, however, that the comparative figures contained in the adopted budget may be subsequently revised as deemed necessary by the District Manager to reflect actual revenues and expenditures for fiscal year 2024-2025 and/or revised projections for fiscal year 2025-2026.
- c. That the adopted budget, as amended, shall be maintained in the office of the District Manager and at the District’s records office and identified as “The Budget for the



Riverbend West Community Development District for the Fiscal Year Beginning October 1, 2025, and Ending September 30, 2026.”

- d. The final adopted budget shall be posted by the District Manager on the District’s website within 30 days after adoption pursuant to Section 189.016(4), Florida Statutes.

**Section 2. Appropriations.** There is hereby appropriated out of the revenues of the District (the sources of the revenues will be provided for in a separate resolution), for the fiscal year beginning October 1, 2025, and ending September 30, 2026, the sum of \$\_\_\_\_\_, which sum is deemed by the Board to be necessary to defray all expenditures of the District during said budget year, to be divided and appropriated in the following fashion:

|   |                 |
|---|-----------------|
| Total General Fund                        | \$ _____        |
| <i>Total Reserve Fund [if Applicable]</i> | \$ _____        |
| Total Debt Service Funds                  | \$ _____        |
| <b>Total All Funds*</b>                   | <b>\$ _____</b> |

\*Not inclusive of any collection costs or early payment discounts.

**Section 3. Budget Amendments.** Pursuant to Section 189.016(6), Florida Statutes, the District at any time within the fiscal year or within 60 days following the end of the fiscal year may amend its budget for that fiscal year as follows:

- a. The Board may authorize an increase or decrease in line item appropriations within a fund by motion recorded in the minutes if the total appropriations of the fund do not increase.
- b. The District Manager or Treasurer may authorize an increase or decrease in line item appropriations within a fund if the total appropriations of the fund do not increase and if the aggregate change in the original appropriation item does not exceed \$10,000 or 10% of the original appropriation.
- c. Any other budget amendments shall be adopted by resolution and be consistent with Florida law. This includes increasing any appropriation item and/or fund to reflect receipt of any additional unbudgeted monies and making the corresponding change to appropriations or the unappropriated balance.

The District Manager or Treasurer must establish administrative procedures to ensure that any budget amendments are in compliance with this section and Section 189.016, Florida Statutes, among other applicable laws. Among other procedures, the District Manager or Treasurer must ensure that any amendments to budget(s) under subparagraph c. above are posted on the District’s website within 5 days after adoption pursuant to Section 189.016(7), Florida Statutes.

**Section 4. Effective Date.** This Resolution shall take effect upon the passage and adoption of this Resolution by the Board.

**Passed and Adopted on August 18, 2025.**

Attested By:

**Riverbend West  
Community Development District**

\_\_\_\_\_  
Print Name: \_\_\_\_\_  
Secretary/Assistant Secretary

\_\_\_\_\_  
Print Name: \_\_\_\_\_  
Chair/Vice Chair of the Board of Supervisors

**Exhibit A: FY 2025-2026 Adopted Budget**

# **Riverbend West**

Community Development District

## ***Annual Operating and Debt Service Budget***

**Fiscal Year 2026**

Final Budget

Prepared by:





# Riverbend West

## Community Development District

---

### Table of Contents

|  | <u>Page #</u> |
|--|---------------|
| <br><b><u>OPERATING BUDGET</u></b>                                   |               |
| General Fund   |               |
| Summary of Revenues, Expenditures and Changes in Fund Balances ..... | 1             |
| Exhibit A - Allocation of Fund Balances .....                        | 2             |
| Budget Narrative .....   | 3 - 5         |
| <br><b><u>DEBT SERVICE BUDGETS</u></b>                               |               |
| Series 2016  |               |
| Summary of Revenues, Expenditures and Changes in Fund Balances ..... | 6             |
| Amortization Schedule .....  | 7 - 8         |
| Budget Narrative .....   | 9             |
| <br>Series 2019  |               |
| Summary of Revenues, Expenditures and Changes in Fund Balances ..... | 10 -11        |
| Amortization Schedule .....  | 12 - 13       |
| Budget Narrative .....   | 14            |
| <br><b><u>SUPPORTING BUDGET SCHEDULES</u></b>                        |               |
| Non-Ad Valorem Assessment Summary .....                              | 15            |

**Summary of Revenues, Expenditures and Changes in Fund Balances**

General Fund  
Fiscal Year 2026

| <i>ACCOUNT DESCRIPTION</i>                | <b>ADOPTED<br/>BUDGET<br/>FY 2025</b> | <b>ACTUAL<br/>THRU<br/>7/31/25</b> | <b>PROJECTED<br/>August-<br/>Sep-25</b> | <b>TOTAL<br/>PROJECTED<br/>FY 2025</b> | <b>% +/-)<br/>Budget</b> | <b>ANNUAL<br/>BUDGET<br/>FY 2026</b> |
|---|---------------------------------------|------------------------------------|---|--|--------------------------|--------------------------------------|
| <b>REVENUES</b>                           |                                       |                                    |   |  |                          |                                      |
| Interest - Investments                    | \$ -                                  | \$ 1,128                           | \$ -                                    | \$ 1,128                               | 0%                       | \$ -                                 |
| Special Assmnts- Tax Collector            | 320,498                               | 333,477                            | -                                       | 333,477                                | 4%                       | 603,475                              |
| Special Assessments - CDD Collected       |                                       |                                    | -                                       | -                                      | 0%                       |                                      |
| <b>TOTAL REVENUES</b>                     | <b>\$ 320,498</b>                     | <b>\$ 334,605</b>                  | <b>\$ -</b>                             | <b>\$ 334,605</b>                      |                          | <b>\$ 603,475</b>                    |
| <b>EXPENDITURES</b>                       |                                       |                                    |   |  |                          |                                      |
| <b>Financial and Administrative</b>       |                                       |                                    |   |  |                          |                                      |
| Supervisor Fees                           | \$ 12,000                             | \$ 5,800                           | \$ 6,200                                | \$ 12,000                              | 0%                       | \$ 12,000                            |
| FICA Taxes                                | 500                                   | 245                                | 255                                     | 500                                    | 0%                       | 500                                  |
| ProfServ-Trustee Fees                     | 7,800                                 | 8,135                              | -                                       | 8,135                                  | 4%                       | 7,800                                |
| District Counsel                          | 10,000                                | 3,518                              | 6,482                                   | 10,000                                 | 0%                       | 10,000                               |
| District Engineer                         | 8,000                                 | 6,880                              | 1,120                                   | 8,000                                  | 0%                       | 16,000                               |
| District Manager                          | 50,448                                | 42,040                             | 8,408                                   | 50,448                                 | 0%                       | 52,970                               |
| Auditing Services                         | 6,000                                 | 4,660                              | 1,340                                   | 6,000                                  | 0%                       | 4,600                                |
| Website Hosting/Email services            | 2,800                                 | 1,538                              | 1,262                                   | 2,800                                  | 0%                       | 2,800                                |
| Public Officials Insurance                | 2,508                                 | 2,373                              | 135                                     | 2,508                                  | 0%                       | 3,260                                |
| Legal Advertising                         | 3,000                                 | 381                                | 2,619                                   | 3,000                                  | 0%                       | 1,500                                |
| Miscellaneous Services                    | 500                                   | 641                                | -                                       | 641                                    | 28%                      | 1,000                                |
| Dues, Licenses, Subscriptions             | 175                                   | 175                                | -                                       | 175                                    | 0%                       | 175                                  |
| <b>Total Financial and Administrative</b> | <b>\$ 103,731</b>                     | <b>\$ 76,386</b>                   | <b>\$ 27,821</b>                        | <b>\$ 104,207</b>                      |                          | <b>\$ 112,605</b>                    |
| <b>Electric Utility Services</b>          |                                       |                                    |   |  |                          |                                      |
| Utility Services                          | \$ 48,000                             | \$ 37,388                          | \$ 37,593                               | \$ 74,981                              | 56%                      | \$ 55,000                            |
| <b>Total Electric Utility Services</b>    | <b>\$ 48,000</b>                      | <b>\$ 37,388</b>                   | <b>\$ 37,593</b>                        | <b>\$ 74,981</b>                       |                          | <b>\$ 55,000</b>                     |
| <b>Water-Sewer Comb Services</b>          |                                       |                                    |   |  |                          |                                      |
| Utility Services                          | \$ 2,500                              | \$ 1,546                           | \$ 954                                  | \$ 2,500                               | 0%                       | \$ 2,500                             |
| <b>Total Water-Sewer Comb Services</b>    | <b>\$ 2,500</b>                       | <b>\$ 1,546</b>                    | <b>\$ 954</b>                           | <b>\$ 2,500</b>                        |                          | <b>\$ 2,500</b>                      |
| <b>Stormwater Control</b>                 |                                       |                                    |   |  |                          |                                      |
| Aquatic Maintenance                       | \$ 15,600                             | \$ 12,868                          | \$ 2,732                                | \$ 15,600                              | 0%                       | \$ 16,100                            |
| <b>Total Stormwater Control</b>           | <b>\$ 15,600</b>                      | <b>\$ 12,868</b>                   | <b>\$ 2,732</b>                         | <b>\$ 15,600</b>                       |                          | <b>\$ 16,100</b>                     |
| <b>Other Physical Environment</b>         |                                       |                                    |   |  |                          |                                      |
| Field Services                            | \$ 7,200                              | \$ 6,000                           | \$ 1,200                                | \$ 7,200                               | 0%                       | \$ 7,560                             |
| Insurance - General Liability             | 4,410                                 | 4,410                              | -                                       | 4,410                                  | 0%                       | 4,786                                |
| Property Insurance                        | 3,920                                 | 3,541                              | 379                                     | 3,920                                  | 0%                       | 3,824                                |
| R&M-Irrigation                            | 3,600                                 | 4,175                              | -                                       | 4,175                                  | 16%                      | 3,600                                |
| Landscape Maintenance                     | 89,741                                | 77,529                             | 12,212                                  | 89,741                                 | 0%                       | 94,228                               |
| Landscape Replacement                     | 13,000                                |                                    | 13,000                                  | 13,000                                 | 0%                       | 7,500                                |
| Landscape- Storm Clean Up & Tree Removal  | 6,750                                 | \$ 454                             | 6,296                                   | 6,750                                  | 0%                       | 50,000                               |

**Summary of Revenues, Expenditures and Changes in Fund Balances**

General Fund  
Fiscal Year 2026

| <i>ACCOUNT DESCRIPTION</i>              | <b>ADOPTED<br/>BUDGET<br/>FY 2025</b> | <b>ACTUAL<br/>THRU<br/>7/31/25</b> | <b>PROJECTED<br/>August-<br/>Sep-25</b> | <b>TOTAL<br/>PROJECTED<br/>FY 2025</b> | <b>% +/-<br/>Budget</b> | <b>ANNUAL<br/>BUDGET<br/>FY 2026</b> |
|---|---------------------------------------|------------------------------------|---|--|-------------------------|--------------------------------------|
| Ditch Repair                            |                                       |                                    | -                                       | -                                      | 0%                      | 200,000                              |
| Insurance - Crime                       |                                       |                                    | -                                       | -                                      | 0%                      | 500                                  |
| <b>Total Other Physical Environment</b> | <b>\$ 128,621</b>                     | <b>\$ 96,109</b>                   | <b>\$ 33,087</b>                        | <b>\$ 129,196</b>                      |                         | <b>\$ 371,498</b>                    |
| <b>Parks and Recreation</b>             |                                       |                                    |   |  |                         |                                      |
| R&M-Fence                               | \$ 6,000                              | \$ 10,849                          | \$ -                                    | \$ 10,849                              | 81%                     | \$ 10,000                            |
| Holiday Decoration                      | 2,690                                 | 2,840                              | -                                       | 2,840                                  | 6%                      | 3,000                                |
| Dog Waste Station Supplies              | 2,640                                 | 2,200                              | 440                                     | 2,640                                  | 0%                      | 2,772                                |
| <b>Total Other Physical Environment</b> | <b>\$ 11,330</b>                      | <b>\$ 15,889</b>                   | <b>\$ 440</b>                           | <b>\$ 16,329</b>                       |                         | <b>\$ 15,772</b>                     |
| <b>Contingency</b>                      |                                       |                                    |   |  |                         |                                      |
| Misc-Contingency                        | \$ 10,716                             | \$ 26,264                          | \$ -                                    | \$ 26,264                              | 145%                    | \$ 30,000                            |
| <b>Total Contingency</b>                | <b>\$ 10,716</b>                      | <b>\$ 26,264</b>                   | <b>\$ -</b>                             | <b>\$ 26,264</b>                       |                         | <b>\$ 30,000</b>                     |
| <b>TOTAL EXPENDITURES</b>               | <b>\$ 320,498</b>                     | <b>\$ 266,450</b>                  | <b>\$ 102,627</b>                       | <b>\$ 369,077</b>                      |                         | <b>\$ 603,475</b>                    |
| Excess (deficiency) of revenues         | \$ -                                  | \$ 68,155                          | \$ (102,627)                            | \$ (34,472)                            |                         | \$ -                                 |
| Net change in fund balance              | \$ -                                  | \$ 68,155                          | \$ (102,627)                            | \$ (34,472)                            |                         | \$ -                                 |
| <b>FUND BALANCE, BEGINNING</b>          | <b>\$ 154,384</b>                     | <b>\$ 595,209</b>                  | <b>\$ 688,981</b>                       | <b>\$ 154,384</b>                      |                         | <b>\$ 119,912</b>                    |
| <b>FUND BALANCE, ENDING</b>             | <b>\$ 154,384</b>                     | <b>\$ 688,981</b>                  | <b>\$ 586,354</b>                       | <b>\$ 119,912</b>                      |                         | <b>\$ 119,912</b>                    |



**Budget Narrative**  
Fiscal Year 2026**REVENUES****Interest-Investments**

The District earns interest on its operating accounts.

**Operations & Maintenance Assessments – On Roll**

The District will levy a Non-Ad Valorem assessment on all the assessable property within the District to pay for the operating expenditures during the Fiscal Year. The collection will be provided by the Tax Collector pursuant to Section 197.3632, Florida Statutes, which is the Uniform Collection Methodology.

**Developer Contributions**

The district will direct bill and collect non-ad valorem assessments on assessable property in order to pay for the debt service expenditures during the fiscal year.

**Other Miscellaneous Revenues**

Additional revenue sources not otherwise specified by other categories.

**Special Assessments-Discounts**

Per Section 197.162, Florida Statutes, discounts are allowed for early payment of assessments only when collected by the Tax Collector. The budgeted amount for the fiscal year is calculated at 4% of the anticipated Non-Ad Valorem assessments.

**EXPENDITURES****Financial and Administrative****Supervisor Fees**

Chapter 190 of the Florida Statutes allows for members of the Board of Supervisors to be compensated \$200 per meeting at which they are in attendance. The amount for the Fiscal Year is based upon four supervisors attending 14 meetings.

**Onsite Staff**

The district may incur expenses for employees or other staff members needed for recreational facilities such as clubhouse staff.

**District Management**

The District retains the services of a consulting manager, who is responsible for the daily administration of the District's business, including any and all financial work related to the Bond Funds and Operating Funds of the District, and preparation of the minutes of the Board of Supervisors. In addition, the District Manager prepares the Annual Budget(s), implements all policies of the Board of Supervisors and attends all meetings of the Board of Supervisors.

**Field Management**

The District has a contract with Inframark Infrastructure Management Services. for services in the administration and operation of the Property and its contractors.

**Administration**

The District receives Management, Accounting and Administrative services as part of a Management Agreement with Inframark Infrastructure Management Services.

**Budget Narrative**  
Fiscal Year 2026

**EXPENDITURES**

**Financial and Administrative** (continued)

**Recording Secretary**

Inframark provides recording services with near verbatim minutes.

**Construction Accounting**

Accounting services as described within the Accounting Services but specifically regarding construction.

**Financial/Revenue Collections**

Service includes all functions necessary for the timely billing and collection and reporting of District assessments in order to ensure adequate funds to meet the District's debt service and operations and maintenance obligations. These services include, but are not limited to, assessment roll preparation and certification, direct billings and funding request processing as well as responding to property owner questions regarding District assessments. This line item also includes the fees incurred for a collection agent to collect the funds for the principal and interest payment for its short-term bond issues and any other bond related collection needs. These funds are collected as prescribed in the Trust Indenture. The Collection Agent also provides for the release of liens on property after the full collection of bond debt levied on particular properties.

**Rentals and Leases**

The anticipated cost of rental expenses including but not limited to renting meeting room space for district board meetings.

**Data Storage**

Cost of server maintenance and technical support for CDD related IT needs.

**Accounting Services**

Services including the preparation and delivery of the District's financial statements in accordance with Governmental Accounting Standards, accounts payable and accounts receivable functions, asset tracking, investment tracking, capital program administration and requisition processing, filing of annual reports required by the State of Florida and monitoring of trust account activity.

**Dissemination Agent/Reporting**

The District is required by the Securities and Exchange Commission to comply with rule 15c2-12(b)-(5), which relates to additional reporting requirements for unrelated bond issues. The budgeted amount for the fiscal year is based on standard fees charged for this service.

**Website Administration Services**

The cost of web hosting and regular maintenance of the District's website by Inframark Management Services.

**District Engineer**

The District's engineer provides general engineering services to the District, i.e., attendance and preparation for board meetings when requested, review of invoices, and other specifically requested assignments.

**District Counsel**

The District's attorney provides general legal services to the District, i.e., attendance and preparation for Board meetings, review of contracts, agreements, resolutions, and other research as directed or requested by the BOS District Manager.

**Trustee Fees**

The District pays US Bank an annual fee for trustee services on the Series 2014 and Series 2015 Bonds. The budgeted amount for the fiscal year is based on previous year plus any out-of-pocket expenses.

**EXPENDITURES**

**Budget Narrative**  
Fiscal Year 2026**Financial and Administrative** (continued)**Auditing Services**

The District is required to conduct an annual audit of its financial records by an Independent Certified Public Accounting Firm. The budgeted amount for the fiscal year is an estimate based on prior year costs.

**Postage, Phone, Faxes, Copies**

This item refers to the cost of materials and service to produce agendas and conduct day-to-day business of the District.

**Mailings**

Copies used in the preparation of agenda packages, required mailings, and other special projects.

**Professional Services – Arbitrage Rebate**

The District is required to annually calculate the arbitrage rebate liability on its Series 2013A and 2020 bonds.

**Legal Advertising**

The District is required to advertise various notices for monthly Board meetings and other public hearings in the newspaper of general circulation.

**Bank Fees**

This represents the cost of bank charges and other related expenses that are incurred during the year.

**Dues, Licenses and Fees**

This represents the cost of the District's operating license as well as the cost of memberships in necessary organizations.

**Onsite Office Supplies**

This represents the cost of supplies used to prepare agenda packages, create required mailings, and perform other special projects. The budget for this line item also includes the cost for supplies in the District office.

**Website ADA Compliance**

Cost of maintaining district website's compliance with the Americans with Disabilities Act of 1990.

**Disclosure Report**

On a quarterly and annual basis, disclosure of relevant district information is provided to the Muni Council, as required within the bond indentures.

**Annual Stormwater Report**

Cost to produce annual report on CDD stormwater infrastructure.

**Miscellaneous Administrative**

All other administrative costs not otherwise specified above.



**Budget Narrative**  
Fiscal Year 2026

|                     |
|---------------------|
| <b>EXPENDITURES</b> |
|---------------------|

**Insurance****Insurance-General Liability**

The District's General Liability & Public Officials Liability Insurance policy is with Egis Insurance Advisors, LLC. The budgeted amount allows for a projected increase in the premium.

**Public Officials Insurance**

The District will incur expenditures for public officials' liability insurance for the Board and Staff and may incur a 10% premium increase.

**Property & Casualty Insurance**

The District will incur fees to insure items owned by the district for its property needs.

**Deductible**

District's share of expenses for insured property when a claim is filed.

|                     |
|---------------------|
| <b>EXPENDITURES</b> |
|---------------------|

**Utility Services****Electric Utility Services**

Electricity for accounts with the local Utilities Commissions for the swim club, parks, and irrigation. Fees are based on historical costs for metered use.

**Streetlights**

Local Utility Company charges electricity usage (maintenance fee). The budget is based on historical costs.

**Lighting Replacement**

Cost of replacing defective lights and bulbs in CDD facilities.

**Decorative Light Maintenance**

Cost of replacement and repair of decorative lighting fixtures.

**Amenity Internet**

Internet service for clubhouse and other amenity locations.

**Water/Waste**

The District charges each new water/sewer system customer an Accrued Guaranteed Revenue Fee (AGRF) for wastewater service in accordance with the adopted rate schedule.

**Gas**

Cost of natural gas for CDD facilities. Regular fuel costs (automobile etc.)

**Facility A/C & Heating R&M**

Cost of repairs and regular maintenance of Air Conditioning and central heating of CDD facilities.

**Utilities – Other**

Utility expenses not otherwise specified in above categories.

**Budget Narrative**  
Fiscal Year 2026

|                     |
|---------------------|
| <b>EXPENDITURES</b> |
|---------------------|

**Amenity**

**Pool Monitor**

Cost of staff members to facilitate pool safety services.

**Janitorial – Contract**

Cost of janitorial labor for CDD Facilities.

**Janitorial Supplies/Other**

Cost of janitorial supplies for CDD Facilities.

**Garbage Dumpster – Rental and Collection**

Cost of dumpster rental and trash collection at CDD facilities.

**Amenity Pest Control**

Cost of exterminator and pesticides at CDD amenities and facilities.

**Amenity R&M**

Cost of repairs and regular maintenance of CDD amenities.

**Amenity Furniture R&M**

Cost of repairs and maintenance to amenity furniture.

**Access Control R&M**

Cost of repairs and maintenance to electronic locks, gates, and other security fixtures.

**Key Card Distribution**

Cost of providing keycards to residents to access CDD Facilities.

**Recreation/Park Facility Maintenance**

Cost of upkeep and repairs to all parks and recreation facilities in the CDD

**Athletic Courts and Field Maintenance**

Cost of upkeep and repairs for athletic fields and courts (ex. Basketball Courts) on CDD property.

**Park Restroom Maintenance**

Upkeep and cleaning of park restrooms on CDD property.

**Playground Equipment and Maintenance**

Cost of acquisition and upkeep of playground equipment for CDD parks.

**Clubhouse Office Supplies**

Cost of supplies for clubhouse clerical duties (pens, paper, ink, etc.)

**Clubhouse IT Support**

Cost of IT services and for clubhouse operational needs.

**Dog Waste Station Service & Supplies**

Cost of cleaning and resupplying dog waste stations.

|                     |
|---------------------|
| <b>EXPENDITURES</b> |
|---------------------|

---

**Budget Narrative**  
Fiscal Year 2026

**Amenity (Continued)**

**Entrance Monuments, Gates, Walls R&M**

Cost of repairs and regular maintenance for entryways, walls, and gates.

**Sidewalk, Pavement, Signage R&M**

Cost of repairs and regular maintenance to sidewalks, pavements, and signs.

**Trail/Bike Path Maintenance**

Cost of upkeep to bike paths and trails on CDD property.

**Boardwalk and Bridge Maintenance**

Cost of upkeep for boardwalks and bridges on CDD property.

**Pool and Spa Permits**

Cost of permits required for CDD pool and spa operation as required by law.

**Pool Maintenance – Contract**

Cost of Maintenance for CDD pool facilities.

**Pool Treatments & Other R&M**

Cost of chemical pool treatments and similar such maintenance.

**Security Monitoring Services**

Cost of CDD security personnel and equipment.

**Special Events**

Cost of holiday celebrations and events hosted on CDD property.

**Community Activities**

Cost of recreational events hosted on CDD property.

**Holiday Decorations**

Cost of decorations for major holidays (i.e., Christmas)

**Miscellaneous Amenity**

Amenity Expenses not otherwise specified.

|                     |
|---------------------|
| <b>EXPENDITURES</b> |
|---------------------|

**Landscape and Pond Maintenance**

**R&M – Stormwater System**

Cost of repairs and regular maintenance to the CDD's stormwater and drainage infrastructure.

**Landscape Maintenance - Contract**

Landscaping company to provide maintenance consisting of mowing, edging, trimming, blowing, fertilizing, and applying pest and disease control chemicals to turf throughout the District.

**Landscaping - R&M**

Cost of repairs and regular maintenance to landscaping equipment.

|                     |
|---------------------|
| <b>EXPENDITURES</b> |
|---------------------|

**Landscape and Pond Maintenance (Continued)**

---



**Budget Narrative**  
Fiscal Year 2026

**Landscaping – Plant Replacement Program**

Cost of replacing dead or damaged plants throughout the district.

**Irrigation Maintenance**

Purchase of irrigation supplies. Unscheduled maintenance consists of major repairs and replacement of system components including weather station and irrigation lines.

**Aquatics – Contract**

Expenses related to the care and maintenance of the lakes and ponds for the control of nuisance plant and algae species.

**Wetlands Maintenance and Monitoring**

Cost of upkeep and protection of wetlands on CDD property.

**Aquatics – Plant Replacement**

The expenses related to replacing beneficial aquatic plants, which may or may not have been required by other governmental entities.

**Waterway Management Program**

Cost of maintaining waterways and rivers on district property.

**Debris Cleanup**

Cost of cleaning up debris on district property.

**Wildlife Control**

Management of wildlife on district property.

|                     |
|---------------------|
| <b>EXPENDITURES</b> |
|---------------------|

**Contingency/Reserves**

**Contingency**

Funds set aside for projects, as determined by the district's board.

**Capital Improvements**

Funding of major projects and building improvements to CDD property.

**R&M Other Reserves**

The board may set aside monetary reserves for necessary for maintenance projects as needed.

Exhibit "A"

Allocation of Fund Balances

| FISCAL YEAR 2025 RESERVE FUND ANALYSIS                         |    |          |
|--|----|----------|
| Beginning Fund Balance - Carry Forward Surplus as of 10/1/2024 | \$ | 154,384  |
| Less: Forecasted Surplus/(Deficit) as of 9/30/2025             |    | (34,472) |
| Estimated Funds Available - 9/30/2025                          |    | 119,912  |

| FISCAL YEAR 2026 RESERVE FUND ANALYSIS                         |    |                          |
|--|----|--------------------------|
| Beginning Fund Balance - Carry Forward Surplus as of 10/1/2025 | \$ | 119,912                  |
| Less: First Quarter Operating Reserve                          |    | (150,869) <sup>(1)</sup> |
| Less: Designated Reserves for Capital Projects                 |    |                          |
| Less: Forecasted Surplus/(Deficit) as of 9/30/2026             |    | -                        |
| Estimated Remaining Undesignated Cash as of 9/30/2026          |    | (30,957)                 |

**Notes**

(1) Represents approximately 3 months of operating expenditures

**Summary of Revenues, Expenditures and Changes in Fund Balances**

Reserve Fund  
Fiscal Year 2026

| <i>ACCOUNT DESCRIPTION</i>      | <b>ADOPTED<br/>BUDGET<br/>FY 2025</b> | <b>ACTUAL<br/>THRU<br/>7/31/25</b> | <b>PROJECTED<br/>August-<br/>Sep-25</b> | <b>TOTAL<br/>PROJECTED<br/>FY 2025</b> | <b>% +/-(-)<br/>Budget</b> | <b>ANNUAL<br/>BUDGET<br/>FY 2026</b> |
|---------------------------------|---------------------------------------|------------------------------------|---|--|----------------------------|--------------------------------------|
| <b>REVENUES</b>                 |                                       |                                    |   |  |                            |                                      |
| Interest - Investments          | \$ -                                  | \$ -                               | \$ -                                    | \$ -                                   | 0%                         | \$ -                                 |
| Special Assmnts- Tax Collector  | 20,000                                | -                                  | 20,000                                  | 20,000                                 | 0%                         | 20,000                               |
| <b>TOTAL REVENUES</b>           | <b>\$ 20,000</b>                      | <b>\$ -</b>                        | <b>\$ 20,000</b>                        | <b>\$ 20,000</b>                       |                            | <b>\$ 20,000</b>                     |
| <b>EXPENDITURES</b>             |                                       |                                    |   |  |                            |                                      |
| <b>Contingency</b>              |                                       |                                    |   |  |                            |                                      |
| Capital Reserve                 | \$ 20,000                             | \$ 13,364                          | \$ 6,636                                | \$ 20,000                              | 0%                         | \$ 100,000                           |
| <b>Total Contingency</b>        | <b>\$ 20,000</b>                      | <b>\$ 13,364</b>                   | <b>\$ 6,636</b>                         | <b>\$ 20,000</b>                       |                            | <b>\$ 100,000</b>                    |
| <b>TOTAL EXPENDITURES</b>       | <b>\$ 20,000</b>                      | <b>\$ 13,364</b>                   | <b>\$ 6,636</b>                         | <b>\$ 20,000</b>                       |                            | <b>\$ 100,000</b>                    |
| Excess (deficiency) of revenues | \$ -                                  | \$ (13,364)                        | \$ 13,364                               | \$ -                                   |                            | \$ (80,000)                          |
| Net change in fund balance      | \$ -                                  | \$ (13,364)                        | \$ 13,364                               | \$ -                                   |                            | \$ (80,000)                          |
| <b>FUND BALANCE, BEGINNING</b>  | <b>\$ 19,232</b>                      | <b>\$ 19,232</b>                   | <b>\$ 5,868</b>                         | <b>\$ 19,232</b>                       |                            | <b>\$ 19,232</b>                     |
| <b>FUND BALANCE, ENDING</b>     | <b>\$ 19,232</b>                      | <b>\$ 5,868</b>                    | <b>\$ 19,232</b>                        | <b>\$ 19,232</b>                       |                            | <b>\$ (60,768)</b>                   |

Assessment Summary  
Fiscal Year 2026 vs. Fiscal Year 2025

| ASSESSMENT ALLOCATION |                        |     |              |             |               |                          |             |      |                          |             |      |                            |             |               |                |
|-----------------------|------------------------|-----|--------------|-------------|---------------|--------------------------|-------------|------|--------------------------|-------------|------|----------------------------|-------------|---------------|----------------|
|                       |                        |     |              |             |               |                          |             |      |                          |             |      |                            |             |               |                |
| Assessment Area One   |                        |     |              |             |               |                          |             |      |                          |             |      |                            |             |               |                |
| Product               | OM Units      DS Units |     | General Fund |             |               | Debt Service Series 2016 |             |      | Debt Service Series 2019 |             |      | Total Assessments per Unit |             |               |                |
|                       |                        |     | FY 2026      | FY 2025     | Dollar Change | FY 2026                  | FY 2025     |      | FY 2026                  | FY 2025     |      | FY 2026                    | FY 2025     | Dollar Change | Percent Change |
| Single Family         | 255                    | 253 | \$ 2,207.61  | \$ 1,068.53 | \$ 1,139.08   | \$ 1,276.59              | \$ 1,276.59 | \$ - | \$ -                     | \$ -        | \$ - | \$ 3,484.20                | \$ 2,345.12 | \$ 1,139.08   | 49%            |
| Single Family Partial | 84                     | 84  | \$ 2,207.61  | \$ 1,068.53 | \$ 1,139.08   | \$ -                     | \$ -        | \$ - | \$ 1,294.00              | \$ 1,294.00 | \$ - | \$ 3,501.61                | \$ 2,362.53 | \$ 1,139.08   | 48%            |
|                       | 339                    | 337 |              |             |               |                          |             |      |                          |             |      |                            |             |               |                |



## RESOLUTION 2025-05

**A RESOLUTION OF THE BOARD OF SUPERVISORS OF THE RIVERBEND WEST COMMUNITY DEVELOPMENT DISTRICT IMPOSING ANNUALLY RECURRING OPERATIONS AND MAINTENANCE NON-AD VALOREM SPECIAL ASSESSMENTS; PROVIDING FOR COLLECTION AND ENFORCEMENT OF ALL DISTRICT SPECIAL ASSESSMENTS; CERTIFYING AN ASSESSMENT ROLL; PROVIDING FOR AMENDMENT OF THE ASSESSMENT ROLL; PROVIDING FOR CHALLENGES AND PROCEDURAL IRREGULARITIES; PROVIDING FOR SEVERABILITY; PROVIDING FOR AN EFFECTIVE DATE.**

**WHEREAS**, the Riverbend West Community Development District (“**District**”) is a local unit of special-purpose government established pursuant to Chapter 190, Florida Statutes for the purpose of providing, preserving, operating, and maintaining infrastructure improvements, facilities, and services to the lands within the District;

**WHEREAS**, the District is located in Hillsborough County, Florida (“**County**”);

**WHEREAS**, the Board of Supervisors of the District (“**Board**”) hereby determines to undertake various activities described in the District’s adopted budget for fiscal year 2025-2026 attached hereto as **Exhibit A (“FY 2025-2026 Budget”)** and incorporated as a material part of this Resolution by this reference;

**WHEREAS**, the District must obtain sufficient funds to provide for the activities described in the FY 2025-2026 Budget;

**WHEREAS**, the provision of the activities described in the FY 2025-2026 Budget is a benefit to lands within the District;

**WHEREAS**, the District may impose non-ad valorem special assessments on benefited lands within the District pursuant to Chapter 190, Florida Statutes;

**WHEREAS**, such special assessments may be placed on the County tax roll and collected by the local Tax Collector (“**Uniform Method**”) pursuant to Chapters 190 and 197, Florida Statutes;

**WHEREAS**, the District has, by resolution and public notice, previously evidenced its intention to utilize the Uniform Method;

**WHEREAS**, the District has approved an agreement with the County Property Appraiser (“**Property Appraiser**”) and County Tax Collector (“**Tax Collector**”) to provide for the collection of special assessments under the Uniform Method;

**WHEREAS**, it is in the best interests of the District to proceed with the imposition, levy, and collection of the annually recurring operations and maintenance non-ad valorem special assessments on all assessable lands in the amount contained for each parcel’s portion of the FY 2025-2026 Budget (“**O&M Assessments**”);

**WHEREAS**, the Board desires to collect the annual installment for the previously levied debt service non-ad valorem special assessments (“**Debt Assessments**”) in the amounts shown in the FY 2025-2026 Budget;

**WHEREAS**, the District adopted an assessment roll as maintained in the office of the District Manager, available for review, and incorporated as a material part of this Resolution by this reference (“**Assessment Roll**”);

**WHEREAS**, it is in the best interests of the District to certify the Assessment Roll to the Tax Collector pursuant to the Uniform Method; and

**WHEREAS**, it is in the best interests of the District to permit the District Manager to amend the Assessment Roll, including the property certified to the Tax Collector by this Resolution, as the Property Appraiser updates the property roll, for such time as authorized by Florida law.

**NOW, THEREFORE, BE IT RESOLVED BY THE BOARD:**

**Section 1. Benefit from Activities and O&M Assessments.** The provision of the activities described in the FY 2025-2026 Budget confer a special and peculiar benefit to the lands within the District, which benefits exceed or equal the O&M Assessments allocated to such lands. The allocation of the expenses of the activities to the specially benefited lands is shown in the FY 2025-2026 Budget and in the Assessment Roll.

**Section 2. O&M Assessments Imposition.** Pursuant to Chapter 190, Florida Statutes and procedures authorized by Florida law for the levy and collection of special assessments, the O&M Assessments are hereby imposed and levied on benefited lands within the District in accordance with the FY 2025-2026 Budget and Assessment Roll. The lien of the O&M Assessments imposed and levied by this Resolution shall be effective upon passage of this Resolution.

**Section 3. Collection and Enforcement of District Assessments.**

- a. **Uniform Method for all Debt Assessments and all O&M Assessments.** The collection of all Debt Assessments and all O&M Assessments for all lands within the District, shall be at the same time and in the same manner as County taxes in accordance with the Uniform Method, as set forth in the Assessment Roll. All assessments collected by the Tax Collector shall be due, payable, and enforced pursuant to Chapter 197, Florida Statutes.
- b. **Future Collection Methods.** The decision to collect special assessments by any particular method – e.g., on the tax roll or by direct bill – does not mean that such method will be used to collect special assessments in future years, and the District reserves the right in its sole discretion to select collection methods in any given year, regardless of past practices.

**Section 4. Certification of Assessment Roll.** The Assessment Roll is hereby certified and authorized to be transmitted to the Tax Collector.

**Section 5. Assessment Roll Amendment.** The District Manager shall keep apprised of all updates made to the County property roll by the Property Appraiser after the date of this Resolution and shall amend the Assessment Roll in accordance with any such updates, for such time as authorized by Florida law. After any amendment of the Assessment Roll, the District Manager shall file the updates to the tax roll in the District records.

**Section 6. Assessment Challenges.** The adoption of this Resolution shall be the final determination of all issues related to the O&M Assessments as it relates to property owners whose benefited property is subject to the O&M Assessments (including, but not limited to, the determination of special benefit and fair apportionment to the assessed property, the method of apportionment, the maximum rate of the O&M Assessments, and the levy, collection, and lien of the O&M Assessments), unless proper steps shall be initiated in a court of competent jurisdiction to secure relief within 30 days from adoption date of this Resolution.

**Section 7. Procedural Irregularities.** Any informality or irregularity in the proceedings in connection with the levy of the O&M Assessments shall not affect the validity of the same after the adoption of this Resolution, and any O&M Assessments as finally approved shall be competent and sufficient evidence that such O&M Assessment was duly levied, that the O&M Assessment was duly made and adopted, and that all other proceedings adequate to such O&M Assessment were duly had, taken, and performed as required.

**Section 8. Severability.** The invalidity or unenforceability of any one or more provisions of this Resolution shall not affect the validity or enforceability of the remaining portions of this Resolution, or any part thereof.

**Section 9. Effective Date.** This Resolution shall take effect upon the passage and adoption of this Resolution by the Board.

**Passed and Adopted on August 18, 2025.**

Attested By:

**Riverbend West  
Community Development District**

\_\_\_\_\_  
Print Name: \_\_\_\_\_  
Secretary/Assistant Secretary

\_\_\_\_\_  
Print Name: \_\_\_\_\_  
Chair/Vice Chair of the Board of Supervisors

**Exhibit A: FY 2025-2026 Budget**

**RESOLUTION 2025-06**

**A RESOLUTION OF THE RIVERBEND WEST COMMUNITY  
DEVELOPMENT DISTRICT ADOPTING THE ANNUAL  
MEETING SCHEDULE FOR FISCAL YEAR 2025/2026**

WHEREAS, the Riverbend West Community Development District (the "District") is a local unit of special-purpose government organized and existing in accordance with Chapter 190, Florida Statutes, and situated entirely within Hillsborough County, Florida; and

WHEREAS, the District is required by Florida law to prepare an annual schedule of its regular public meetings which designates the date, time and location of the District's meetings; and

WHEREAS, the Board has proposed the Fiscal Year 2025/2026 annual meeting schedule as attached in **Exhibit A**;

**NOW, THEREFORE BE IT RESOLVED BY THE BOARD OF  
SUPERVISORS OF THE RIVERBEND WEST COMMUNITY  
DEVELOPMENT DISTRICT**

1. The Fiscal Year 2025/2026 annual public meeting schedule attached hereto and incorporated by reference herein as Exhibit A is hereby approved and will be published and filed in accordance with the requirements of Florida law.

This Resolution shall become effective immediately upon its adoption.

**PASSED AND ADOPTED THIS 18<sup>th</sup> DAY OF AUGUST, 2025.**

ATTEST:

**RIVERBEND WEST COMMUNITY  
DEVELOPMENT DISTRICT**

\_\_\_\_\_  
Asst. Secretary

\_\_\_\_\_  
Chair / Vice Chair



**EXHIBIT "A"**

**BOARD OF SUPERVISORS MEETING DATES  
RIVERBEND WEST COMMUNITY DEVELOPMENT DISTRICT  
FISCAL YEAR 2025/2026**

October 20, 2025  
November 17, 2025  
December 15, 2025  
January 12, 2026  
February 16, 2026  
March 16, 2026  
April 20, 2026  
May 18, 2026  
June 15, 2026  
July 20, 2026  
August 17, 2026  
September 21, 2026

All meetings will convene at 6:00 p.m. at the Southshore Regional Library, located at 15816 Beth Shields Way, Ruskin, FL 33573.

## **RESOLUTION 2025-07**

### **A RESOLUTION OF THE BOARD OF SUPERVISORS OF THE RIVERBEND WEST COMMUNITY DEVELOPMENT DISTRICT ADOPTING GOALS, OBJECTIVES, AND PERFORMANCE MEASURES AND STANDARDS; PROVIDING A SEVERABILITY CLAUSE; AND PROVIDING AN EFFECTIVE DATE.**

**WHEREAS**, the Riverbend West Community Development District (the “District”) is a local unit of special-purpose government created and existing pursuant to Chapter 190, *Florida Statutes*; and

**WHEREAS**, effective July 1, 2024, the Florida Legislature adopted House Bill 7013, codified as Chapter 2024-136, Laws of Florida (“HB 7013”) and creating Section 189.0694, Florida Statutes; and

**WHEREAS**, pursuant to HB 7013 and Section 189.0694, Florida Statutes, beginning October 1, 2024, the District shall establish goals and objectives for the District and create performance measures and standards to evaluate the District’s achievement of those goals and objectives; and

**WHEREAS**, the District Manager has prepared the attached goals, objectives, and performance measures and standards and presented them to the Board of the District; and

**WHEREAS**, the District’s Board of Supervisors (“Board”) finds that it is in the best interests of the District to adopt by resolution the attached goals, objectives and performance measures and standards.

### **NOW, THEREFORE, BE IT RESOLVED BY THE BOARD OF SUPERVISORS OF THE RIVERBEND WEST COMMUNITY DEVELOPMENT DISTRICT:**

**SECTION 1.** The recitals so stated are true and correct and by this reference are incorporated into and form a material part of this Resolution.

**SECTION 2.** The District Board of Supervisors hereby adopts the goals, objectives and performance measures and standards as provided in **Exhibit A**. The District Manager shall take all actions to comply with Section 189.0694, Florida Statutes, and shall prepare an annual report regarding the District’s success or failure in achieving the adopted goals and objectives for consideration by the Board of the District.

**SECTION 3.** If any provision of this resolution is held to be illegal or invalid, the other provisions shall remain in full force and effect.

**SECTION 4.** This resolution shall become effective upon its passage and shall remain in effect unless rescinded or repealed.

**PASSED AND ADOPTED** this 18<sup>th</sup> day of August 2025.

**ATTEST:**

**RIVERBEND WEST  
COMMUNITY DEVELOPMENT DISTRICT**

---

Secretary/Assistant Secretary

---

Chair, Board of Supervisors

**Exhibit A:** Performance Measures/Standards and Annual Reporting

**Exhibit A:**  
Goals, Objectives, and Annual Reporting Form



**Riverbend West Community Development District (“District”)  
Performance Measures/Standards & Annual Reporting Form**

**October 1, 2025 – September 30, 2026**

**1. Community Communication and Engagement**

**Goal 1.1: Public Meetings Compliance**

**Objective:** Hold at least twelve regular Board of Supervisor (“Board”) meetings per year to conduct District-related business and discuss community needs.

**Measurement:** Number of public Board meetings held annually as evidenced by meeting minutes and legal advertisements.

**Standard:** A minimum of twelve Board meetings were held during the fiscal year.

**Achieved:** Yes ☐ No ☐

**Goal 1.2: Notice of Meetings Compliance**

**Objective:** Provide public notice of each meeting in accordance with Florida Statutes, using at least two communication methods.

**Measurement:** Timeliness and method of meeting notices as evidenced by posting to the District’s website, publishing in local newspaper of general circulation, and or via electronic communication.

**Standard:** 100% of meetings were advertised in accordance with Florida Statutes on at least two mediums (e.g., newspaper, District website, electronic communications).

**Achieved:** Yes ☐ No ☐

**Goal 1.3: Access to Records Compliance**

**Objective:** Ensure that meeting minutes and other public records are readily available and easily accessible to the public by completing monthly District website checks.

**Measurement:** Monthly website reviews will be completed to ensure meeting minutes and other public records are up to date as evidenced by District Management’s records.

**Standard:** 100% of monthly website checks were completed by District Management or third party vendor.

**Achieved:** Yes ☐ No ☐

**2. Infrastructure and Facilities Maintenance**

**Goal 2.1: Field Management and/or District Management Site Inspections**

**Objective:** Field manager and/or district manager will conduct inspections per District Management services agreement to ensure safety and proper functioning of the District’s infrastructure.

**Measurement:** Field manager and/or district manager visits were successfully completed per management agreement as evidenced by field manager and/or district manager’s reports, notes or other record keeping method.

**Standard:** 100% of site visits were successfully completed as described within District Management services agreement

**Achieved:** Yes ☐ No ☐

**Goal 2.2: District Infrastructure and Facilities Inspections**

**Objective:** District Engineer will conduct an annual inspection of the District’s infrastructure and related systems.

**Measurement:** A minimum of one inspection completed per year as evidenced by district engineer’s report related to District’s infrastructure and related systems.

**Standard:** Minimum of one inspection was completed in the fiscal year by the District’s engineer.

**Achieved:** Yes ☐ No ☐

### **3. Financial Transparency and Accountability**

#### **Goal 3.1: Annual Budget Preparation**

**Objective:** Prepare and approve the annual proposed budget by June 15 and final budget was adopted by September 30 each year.

**Measurement:** Proposed budget was approved by the Board before June 15 and final budget was adopted by September 30 as evidenced by meeting minutes and budget documents listed on the District's website and/or within District records.

**Standard:** 100% of budget approval & adoption were completed by the statutory deadlines and posted to the District's website.

**Achieved:** Yes ☐ No ☐

#### **Goal 3.2: Financial Reports**

**Objective:** Publish to the District's website the most recent versions of the following documents: Florida Auditor General link (<https://flauditor.gov/>) to obtain current and past Annual audit, current fiscal year budget with any amendments, and most recent financials within the latest agenda package.

**Measurement:** Florida Auditor General link (<https://flauditor.gov/>) to the Annual audit, previous years' budgets, and financials are accessible to the public as evidenced by corresponding documents on the District's website.

**Standard:** District's website contains 100% of the following information: Department of Financial Services link to obtain Annual audit, most recent adopted/amended fiscal year budget, and most recent agenda package with updated financials.

**Achieved:** Yes ☐ No ☐

#### **Goal 3.3: Annual Financial Audit**

**Objective:** Conduct an annual independent financial audit per statutory requirements and publish the Florida Auditor General link (<https://flauditor.gov/>) to the results to the District's website for public inspection, and transmit to the State of Florida.

**Measurement:** Timeliness of audit completion and publication as evidenced by meeting minutes showing Board approval and annual audit is available on the District's website and transmitted to the State of Florida.

**Standard:** Audit was completed by an independent auditing firm per statutory requirements and results were posted to the District's website and transmitted to the State of Florida.

**Achieved:** Yes ☐ No ☐

#### **SIGNATURES:**

Chair/Vice Chair: \_\_\_\_\_

Date: \_\_\_\_\_

Printed Name: \_\_\_\_\_

Riverbend West Community Development District

District Manager: \_\_\_\_\_

Date: \_\_\_\_\_

Printed Name: \_\_\_\_\_

Riverbend West Community Development District

**RESOLUTION 2025-08**

**A RESOLUTION OF THE BOARD OF SUPERVISORS  
DESIGNATING THE OFFICERS OF RIVERBEND WEST  
COMMUNITY DEVELOPMENT DISTRICT, AND  
PROVIDING FOR AN EFFECTIVE DATE.**

**WHEREAS**, Riverbend West Community Development District (the “District”), is a local unit of special-purpose government created and existing pursuant to Chapter 190, Florida Statutes; and

**WHEREAS**, the Board of Supervisors (hereinafter the “Board”) now desires to designate the Officers of the District per Chapter 190, Florida Statutes.

**NOW, THEREFORE, BE IT RESOLVED BY THE BOARD  
OF SUPERVISORS OF RIVERBEND WEST  
COMMUNITY DEVELOPMENT DISTRICT:**

1. The following persons are elected to the offices shown, to wit:

|                        |                     |
|------------------------|---------------------|
| _____                  | Chair               |
| _____                  | Vice-Chair          |
| <u>Jennifer Goldyn</u> | Secretary           |
| <u>Leah Popelka</u>    | Treasurer           |
| <u>Angel Montagna</u>  | Assistant Treasurer |
| _____                  | Assistant Treasurer |
| _____                  | Assistant Secretary |
| _____                  | Assistant Secretary |
| <u>Kristee Cole</u>    | Assistant Secretary |
| <u>Alize Aninipot</u>  | Assistant Secretary |

2. This Resolution shall become effective immediately upon its adoption.

**PASSED AND ADOPTED** this 18<sup>th</sup> day of August, 2025.

**ATTEST:**

**RIVERBEND WEST  
COMMUNITY DEVELOPMENT  
DISTRICT**

\_\_\_\_\_  
Name: \_\_\_\_\_  
Secretary / Assistant Secretary

\_\_\_\_\_  
Name: \_\_\_\_\_  
Chair / Vice Chair of the Board of Supervisors

**MINUTES OF MEETING  
RIVERBEND WEST  
COMMUNITY DEVELOPMENT DISTRICT**

The regular meeting of the Board of Supervisors of the Riverbend West Community Development District was held on Monday, June 16, 2025, and called to order at 6:00 p.m., at the SouthShore Regional Library, located at 15816 Beth Shields Way, Ruskin, FL 33573.

Present and constituting a quorum were:

|                    |                                    |
|--------------------|------------------------------------|
| Rebecca Hartsook   | Board Supervisor, Chair            |
| Joe Collins        | Board Supervisor, Asst. Vice Chair |
| Laura Ferreira     | Board Supervisor, Asst. Secretary  |
| Clayton Patmagrian | Board Supervisor, Asst. Secretary  |

Also present were:

|               |  |
|---------------|--|
| Kristee Cole  | District Manager, Inframark                        |
| Phil Chang    | District Engineer, BGE Inc<br>(via Teleconference) |
| Gabe Montagna | Field Services, Inframark                          |
| Epi Carvajal  | Representative, Pine Lake Services                 |

|          |         |
|----------|---------|
| Audience | Present |
|----------|---------|

**FIRST ORDER OF BUSINESS                      Call to Order and Roll Call**

The meeting was called to order at 6:00 p.m.

**SECOND ORDER OF BUSINESS                      Adoption of the Agenda**

On MOTION by Mr. Patmagrian, seconded by Ms. Hartsook, with all in favor, the Final Agenda for June 16, 2025, was approved.

**THIRD ORDER OF BUSINESS                      Audience Comments on Agenda Items**

There being none, the next order of business followed.

**FOURTH ORDER OF BUSINESS                      Staff Reports**

**A. Aquatics Report for June 2025**

Mr. Jasczak presented the Aquatics Report and updated the Board on the ditch status.

**B. Field Inspection Report for June 2025**

Mr. Montagna updated the Board on his report and informed the Board that the fence repair is completed.

**C. Landscape Update**

Mr. Carvajal gave an update regarding the community.

**D. District Counsel**

Not present and no report.



**E. District Engineer**

Mr. Chang presented the ditch assessment and reported that 6-inches to 12-inches riprap would be utilized for the ditch. Mr. Collins stated that, in his opinion, the riprap size should range between 18-inch and 48- inches.

**F. District Manager**

The Board informed Ms. Cole of their decision to cancel the July CDD meeting.

**FIFTH ORDER OF BUSINESS                      Business Items**

**A. Consideration of Board Resume**

Beth Bellemore received one vote, and Shalonda Antonie received three votes. Ms. Antonie will take the Oath of Office at the August meeting.

On MOTION by Ms. Ferreira, seconded by Mr. Patmagrian, with all in favor, the Board appointed Shalonda Antonie to Seat 5 of the Riverbend West Community Development District.

**B. Consideration of Holiday Lighting Proposal**

On MOTION by Ms. Antonie, seconded by Ms. Ferreira, with all in favor, the Board approved the Meyer Time Maintenance Holiday Lighting Proposal in the amount of \$2,535.

**SIXTH ORDER OF BUSINESS                      Business Administration**

**A. Consideration of Regular Meeting Minutes from May 19, 2025**

On MOTION by Ms. Antonie, seconded by Mr. Patmagrian, with all in favor, the regular meeting minutes from May 19, 2025, were approved.

**B. Review of May 2025 Financials & Check Register**

On MOTION by Mr. Patmagrian, seconded by Ms. Ferreira, with all in favor, the May 2025 Check Register was approved.

**SEVENTH ORDER OF BUSINESS                      Supervisor Requests**

The Board expressed their satisfaction with the fence.

**EIGHTH ORDER OF BUSINESS                      Adjournment**

On MOTION by Ms. Antonie, seconded by Ms. Hartsook, with all in favor, the meeting was adjourned at 7:01 p.m.

# RIVERBEND WEST COMMUNITY DEVELOPMENT DISTRICT

## Payment Register by Fund

For the Period from 06/01/2025 to 06/30/2025

(Sorted by Check / ACH No.)

| Fund No. | Check / ACH No. | Date | Vendor | Payee | Invoice No. | Payment Description | Invoice / GL Description | G/L Account # | Amount Paid |
|----------|-----------------|------|--------|-------|-------------|---------------------|--------------------------|---------------|-------------|
|----------|-----------------|------|--------|-------|-------------|---------------------|--------------------------|---------------|-------------|

### **GENERAL FUND - 001**

|                   |        |          |        |                                    |             |  |                          |              |                    |
|-------------------|--------|----------|--------|------------------------------------|-------------|--|--------------------------|--------------|--------------------|
| 001               | 100066 | 06/04/25 | V00014 | PINE LAKE NURSERY LLC              | 7476        | landscape maintenance                          | Landscape Maintenance    | 546300-53900 | \$7,077.89         |
| 001               | 100067 | 06/04/25 | V00005 | INFRAMARK LLC                      | 150822      | landscape inspection, district manager, porter | FIELD OPERATIONS JUL24   | 531185-53900 | \$600.00           |
| 001               | 100067 | 06/04/25 | V00005 | INFRAMARK LLC                      | 150822      | landscape inspection, district manager, porter | ADMIN FEES JUL24         | 531150-51301 | \$4,204.00         |
| 001               | 100067 | 06/04/25 | V00005 | INFRAMARK LLC                      | 150822      | landscape inspection, district manager, porter | PORTER SERVICES          | 552160-57201 | \$220.00           |
| 001               | 100068 | 06/06/25 | V00014 | PINE LAKE NURSERY LLC              | 7554        | irrigation repair                              | IRR REPAIRS              | 546300-53900 | \$1,859.71         |
| 001               | 100069 | 06/06/25 | V00042 | BETH BELLEMORE                     | 060225      | WATERING                                       | Misc-Contingency         | 549900-58200 | \$50.00            |
| 001               | 100070 | 06/17/25 | V00006 | STRALEY ROBIN VERICKER             | 26611       | District Counsel                               | District Counsel         | 531146-51401 | \$939.50           |
| 001               | 100071 | 06/24/25 | V00013 | ADVANCED AQUATIC SERVICES, INC.    | 10559286    | April 2025 Debris removal from fencing         | Removal of fencing       | 549900-58200 | \$300.00           |
| 001               | 1182   | 06/17/25 | V00009 | DDD FENCING (TRIPLE D FENCING) LLC | 20789       | May 2025 Fence Repair from Milton              | Fence Replacement        | 546025-57201 | \$51,024.50        |
| 001               | 1184   | 06/23/25 | V00020 | JOSEPH W.L. COLLINS                | JC-061625   | BOARD 6/16/25                                  | P/R-Board of Supervisors | 511001-51101 | \$200.00           |
| 001               | 300009 | 06/03/25 | V00003 | BOCC - ACH                         | 052925-1492 | water bill                                     | Utility Services         | 543063-53601 | \$170.20           |
| 001               | 300010 | 06/25/25 | V00015 | TECO ACH                           | 060325 ACH  | BILL PRD 4/29-5/28/25                          | Electric                 | 543063-53100 | \$4,556.67         |
| <b>Fund Total</b> |        |          |        |                                    |             |  |                          |              | <b>\$71,202.47</b> |

### **SERIES 2016 DEBT SERVICE FUND - 200**

|                   |      |          |        |                            |                |                           |                            |        |                 |
|-------------------|------|----------|--------|----------------------------|----------------|---------------------------|----------------------------|--------|-----------------|
| 200               | 1183 | 06/17/25 | V00032 | Riverbend West C/O US BANK | 06092025 - 726 | FY25 TAX DIST ID DIST 726 | SER 2016 FY25 TAX DIST 726 | 103200 | \$963.01        |
| <b>Fund Total</b> |      |          |        |                            |                |                           |                            |        | <b>\$963.01</b> |

### **SERIES 2019 DEBT SERVICE FUND - 201**

|                   |      |          |        |                            |                |                           |                            |        |                 |
|-------------------|------|----------|--------|----------------------------|----------------|---------------------------|----------------------------|--------|-----------------|
| 201               | 1183 | 06/17/25 | V00032 | Riverbend West C/O US BANK | 06092025 - 726 | FY25 TAX DIST ID DIST 726 | SER 2019 FY25 TAX DIST 726 | 103200 | \$324.09        |
| <b>Fund Total</b> |      |          |        |                            |                |                           |                            |        | <b>\$324.09</b> |

|                          |                    |
|--------------------------|--------------------|
| <b>Total Checks Paid</b> | <b>\$72,489.57</b> |
|--------------------------|--------------------|



12980 Tarpon Springs Road  
Odessa, FL 33556

pinelakellc.com

## INVOICE

| Date     | Invoice No. |
|----------|-------------|
| 06/01/25 | 7476        |
| Terms    | Due Date    |
| Net 30   | 07/01/25    |

### BILL TO

Kristee Cole  
Inframark  
313 Campus Street  
Celebration, FL 34747

### PROPERTY

Riverbend West CDD  
368 Cascade Bend Dr.  
Ruskin, FL 33570

| Amount Due | Enclosed |
|------------|----------|
| \$7,077.89 |          |

*Please detach top portion and return with your payment.*

| QTY | ITEM   | UNIT PRICE | EXT PRICE         | SALES TAX     | LINE TOTAL        |
|-----|--|------------|-------------------|---------------|-------------------|
|     | #4703 - Riverbend West CDD<br>24-25 RENEWAL June 2025  |            | \$7,077.89        | \$0.00        | \$7,077.89        |
|     | #4703 - Riverbend West CDD 24<br>-25 RENEWAL June 2025 |            | \$7,077.89        | \$0.00        | \$7,077.89        |
|     | <b>Total</b>   |            | <b>\$7,077.89</b> | <b>\$0.00</b> | <b>\$7,077.89</b> |



# INVOICE

2002 West Grand Parkway North  
Suite 100  
Katy, TX 77449

**INVOICE#**

150822

**DATE**

6/1/2025

**BILL TO**

Riverbend West Community  
Development District  
313 Campus St  
Celebration FL 34747-4982  
United States

**CUSTOMER ID**

C3041

**NET TERMS**

Net 30

**PO#****DUE DATE**

7/1/2025

Services provided for the Month of: June 2025

| DESCRIPTION         | QTY | UOM | RATE     | MARKUP | AMOUNT          |
|---------------------|-----|-----|----------|--------|-----------------|
| Administrative Fees | 1   | Ea  | 4,204.00 |        | 4,204.00        |
| Field Operations    | 1   | Ea  | 600.00   |        | 600.00          |
| Porter Services     | 1   | Ea  | 220.00   |        | 220.00          |
| <b>Subtotal</b>     |     |     |          |        | <b>5,024.00</b> |

**Subtotal** \$5,024.00

**Tax** \$0.00

**Total Due** \$5,024.00

**Remit To : Inframark LLC, PO BOX 733778, Dallas, Texas, 75373-3778**

*To pay by Credit Card, please contact us at 281-578-4299, 9:00am - 5:30pm EST, Monday – Friday. A surcharge fee may apply.*

*To pay via ACH or Wire, please refer to our banking information below:*

*Account Name: INFRAMARK, LLC*

*ACH - Bank Routing Number: 111000614 / Account Number: 912593196*

*Wire - Bank Routing Number: 021000021 / SWIFT Code: CHASUS33 / Account Number: 912593196*

*Please include the Customer ID and the Invoice Number on your form of payment.*



12980 Tarpon Springs Road  
Odessa, FL 33556

pinelakellc.com

## INVOICE

| Date     | Invoice No. |
|----------|-------------|
| 05/31/25 | 7554        |
| Terms    | Due Date    |
| Net 30   | 06/30/25    |

| BILL TO   |
|---|
| Kristee Cole<br>Inframark<br>313 Campus Street<br>Celebration, FL 34747 |

| PROPERTY   |
|--|
| Riverbend West CDD<br>368 Cascade Bend Dr.<br>Ruskin, FL 33570 |

| Amount Due | Enclosed |
|------------|----------|
| \$1,859.71 |          |

Please detach top portion and return with your payment.

| QTY | ITEM | UNIT PRICE | EXT PRICE  | SALES TAX | LINE TOTAL |
|-----|------|------------|------------|-----------|------------|
|     |      |            | \$1,859.71 | \$0.00    | \$1,859.71 |

Pine Lake Services, LLC  
would like to thank you for the  
opportunity to bid. We look  
forward to working with you on  
this project. If you have any  
questions, please feel free to  
contact us at any time at  
projects@pinelakeLLC.com or  
(813) 948-4736.

|  |                   |               |                   |
|--|-------------------|---------------|-------------------|
| Remove & Replace 2-30G<br>Eagleton Stander Holly Trees<br>south of main sign | \$1,680.00        | \$0.00        | \$1,680.00        |
| Irrigation Enhancement   | \$179.71          | \$0.00        | \$179.71          |
| <b>Total</b>   | <b>\$1,859.71</b> | <b>\$0.00</b> | <b>\$1,859.71</b> |



**CHECK REQUEST**  
**FORM Riverbend**  
**West CDD**

**Date:** 6.2.25

**Invoice Number:** 060225

**Payable To:** Beth Bellemore  
**Mailing Address:** 206 Eagle Summit Dr.  
Ruskin, FL 33570

**Check amount:** \$50

**Please cut check from Acct.** watering

**Check description/reason:**

**Coding:** misc revenues

**Mailing instructions:**

**Due Date for Check:** ASAP

**Requested By:** Kristee Cole

**Authorized By:** Kristee Cole

# Straley Robin Vericker

1510 W. Cleveland Street

Tampa, FL 33606

Telephone (813) 223-9400

Federal Tax Id. - 20-1778458

Riverbend West CDD  
210 N. University Drive, Ste. 702  
Coral Springs, FL 33071

June 10, 2025

Client: 001469

Matter: 000001

Invoice #: 26611

Page: 1

RE: General

For Professional Services Rendered Through May 31, 2025

## SERVICES

| Date                        | Person | Description of Services   | Hours | Amount   |
|-----------------------------|--------|---|-------|----------|
| 5/9/2025                    | CAW    | REVIEW CHANGES FROM BGE ON AGREEMENT FOR PROFESSIONAL ENGINEERING SERVICES; FINALIZE AGREEMENT AND SEND FOR SIGNATURE.  | 0.3   | \$91.50  |
| 5/14/2025                   | AM     | REVIEW PROPOSED BUDGET FOR FISCAL YEAR 2025-2026 RE INCREASE; PREPARE DRAFT MAILED NOTICE LETTER AND PUBLICATION ADS FOR BUDGET; PREPARE RESOLUTION ADOPTING BUDGET FOR FISCAL YEAR 2025-2026 AND RESOLUTION LEVYING AND IMPOSING O&M ASSESSMENTS FOR BUDGET. | 3.8   | \$665.00 |
| 5/19/2025                   | CAW    | REVIEW AGENDA FOR MAY 19TH BAORD MEETING; EMAIL CORRESPONDENCE WITH DISTRICT MANAGER REGARDING MEETING.   | 0.3   | \$91.50  |
| 5/30/2025                   | CAW    | REVIEW O&M ASSESSMENT LETTER, PUBLICATIONS FOR PUBLIC HEARING ON ADOPTING 2025/2026 BUDGET, RESOLUTION ADOPTING THE 2025/2026 BUDGET, AND RESOLUTION IMPOSING ASSESSMENTS.  | 0.3   | \$91.50  |
| Total Professional Services |        |   | 4.7   | \$939.50 |

June 10, 2025  
Client: 001469  
Matter: 000001  
Invoice #: 26611

Page: 2

---

|                        |          |                   |
|------------------------|----------|-------------------|
| Total Services         | \$939.50 |                   |
| Total Disbursements    | \$0.00   |                   |
| Total Current Charges  |          | \$939.50          |
| Previous Balance       |          | \$1,664.32        |
| Less Payments          |          | (\$1,384.82)      |
| <b>PAY THIS AMOUNT</b> |          | <b>\$1,219.00</b> |

***Please Include Invoice Number on all Correspondence***

Outstanding Invoices

| Invoice Number              | Invoice Date   | Services | Disbursements | Interest | Tax    | Total      |
|-----------------------------|----------------|----------|---------------|----------|--------|------------|
| 26144                       | March 12, 2025 | \$279.50 | \$0.00        | \$0.00   | \$0.00 | \$1,219.00 |
| Total Remaining Balance Due |                |          |               |          |        | \$1,219.00 |

AGED ACCOUNTS RECEIVABLE

| 0-30 Days | 31-60 Days | 61-90 Days | Over 90 Days |
|-----------|------------|------------|--------------|
| \$939.50  | \$0.00     | \$279.50   | \$0.00       |

Advanced Aquatic Services Inc.  
292 South Military Trail  
Deerfield Beach, FL 33442  
954-596-2127

|           |
|-----------|
| 6/20/2025 |
| 10559286  |
| \$300.00  |

|   |
|---|
| Bill To   |
| Riverbend West CDD<br>c/o INFRAMARK<br>11555 Heron Bay Blvd., Ste. 201<br>Coral Springs, FL 33076 |

|           |
|-----------|
| Due Date  |
| Net 30    |
| 7/20/2025 |

|   |        |
|---|--------|
|   |        |
| Removed all debris within the ditches per Agreement dated 4-17-25 | 300.00 |
| Completed 6-20-25   |        |

Advanced Aquatic Services Inc.  
292 South Military Trail  
Deerfield Beach, FL 33442  
954-596-2127

\$300.00



Triple D  
Fencing  
1615 6<sup>th</sup> St SE Ruskin, FL  
33570  
352-257-3086

# INVOICE

Invoice # 20789  
Invoice Date 05/10/25  
Due Date 05/10/25

**BILL TO**  
Riverbend West CDD  
313 Campus St. Celebration,  
FL 34747

| DESCRIPTION  | QUANTITY | PRICE | TOTAL       |
|--|----------|-------|-------------|
| CONTRACT #1436 Milton Fence Repair/Replae COMPLETION |          |       | \$51,024.50 |
|  |          |       |             |
|  |          |       |             |
|  |          |       |             |

Subtotal  
Tax  
TOTAL DUE \$51,024.50

AVAILABLE PAYMENT OPTIONS:  
Cash   Check   Square (3.5% fee added)  
Venmo   CashApp   Apple Pay

Thank you!

Attendance Confirmation  
for  
Board of Supervisors

|                     |                           |
|---------------------|---------------------------|
| District Name:      | <u>Riverbend West CDD</u> |
| Board Meeting Date: | <u>6.16.25</u>            |

| Name |                    | In Attendance<br>Please X | Paid     |
|------|--------------------|---------------------------|----------|
| 2    | Clayton Patmagrian | X                         | \$200.00 |
| 4    | Joe Collins        | X                         | \$200.00 |
| 5    | Shalonda Antoine   | X                         | \$200.00 |

*Kristee Cole*  
District Manager Signature

6.18.25  
Date



Hillsborough  
County Florida

S-Page 1 of 2

| CUSTOMER NAME      | ACCOUNT NUMBER | BILL DATE  | DUE DATE   |
|--------------------|----------------|------------|------------|
| RIVERBEND WEST CDD | 1442461492     | 05/29/2025 | 06/20/2025 |

#### Summary of Account Charges

|                          |                 |
|--------------------------|-----------------|
| Previous Balance         | \$191.66        |
| Net Payments - Thank You | \$-191.66       |
| Total Account Charges    | <b>\$170.20</b> |

|                   |                 |
|-------------------|-----------------|
| <b>AMOUNT DUE</b> | <b>\$170.20</b> |
|-------------------|-----------------|

#### Important Message

Tampa Bay Water Wise offers rebates to residents and businesses for water-saving upgrades like high-efficiency toilets and efficient sprinkler systems. Save water, reduce utility costs, and protect our resources. Learn more at [TampaBayWaterWise.org/HB](http://TampaBayWaterWise.org/HB).

This is your summary of charges. Detailed charges by premise are listed on the following page(s)



Hillsborough  
County Florida

Make checks payable to: **BOCC**

ACCOUNT NUMBER: 1442461492



#### ELECTRONIC PAYMENTS BY CHECK OR

Automated Payment Line: (813) 276 8526

Internet Payments: [HCFLGov.net/WaterBill](http://HCFLGov.net/WaterBill)

Additional Information: [HCFLGov.net/Water](http://HCFLGov.net/Water)



**THANK YOU!**



RIVERBEND WEST CDD  
C/O INFRAMARK  
210 NORTH UNIVERSITY DR SUITE 702  
CORAL SPRINGS FL 33071-7320

1,307 0

**DUE DATE**

**06/20/2025**

**Auto Pay Scheduled  
DO NOT PAY**



0014424614924 00000170209



Hillsborough  
County Florida

| CUSTOMER NAME      | ACCOUNT NUMBER | BILL DATE  | DUE DATE   |
|--------------------|----------------|------------|------------|
| RIVERBEND WEST CDD | 1442461492     | 05/29/2025 | 06/20/2025 |

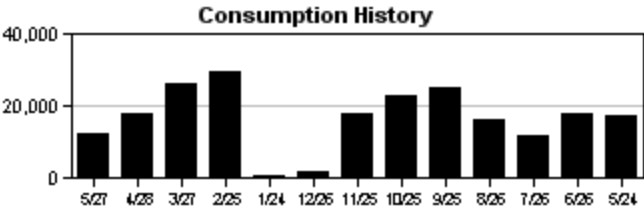
Service Address: 2070 LEAPING WILDCAT PL (COMM IRRIG MTR)

S-Page 2 of 2

| METER NUMBER | PREVIOUS DATE | PREVIOUS READ | PRESENT DATE | PRESENT READ | CONSUMPTION | READ TYPE | METER DESCRIPTION |
|--------------|---------------|---------------|--------------|--------------|-------------|-----------|-------------------|
| 61142667     | 04/28/2025    | 24641         | 05/27/2025   | 24765        | 12400 GAL   | ACTUAL    | WATER             |

Service Address Charges

|                               |          |
|-------------------------------|----------|
| Customer Service Charge       | \$6.03   |
| Purchase Water Pass-Thru      | \$37.45  |
| Water Base Charge             | \$95.40  |
| Water Usage Charge            | \$12.77  |
| Total Service Address Charges | \$151.65 |



Hillsborough  
County Florida

| CUSTOMER NAME      | ACCOUNT NUMBER | BILL DATE  | DUE DATE   |
|--------------------|----------------|------------|------------|
| RIVERBEND WEST CDD | 1442461492     | 05/29/2025 | 06/20/2025 |

Service Address: 222 CASCADE BEND DR

S-Page 2 of 2

| METER NUMBER | PREVIOUS DATE | PREVIOUS READ | PRESENT DATE | PRESENT READ | CONSUMPTION | READ TYPE | METER DESCRIPTION |
|--------------|---------------|---------------|--------------|--------------|-------------|-----------|-------------------|
| 703320784    | 04/29/2025    | 26            | 05/29/2025   | 26           | 0 GAL       | ACTUAL    | WATER             |

Service Address Charges

|                               |         |
|-------------------------------|---------|
| Customer Service Charge       | \$6.03  |
| Water Base Charge             | \$12.52 |
| Total Service Address Charges | \$18.55 |



| RIVERBEND WEST        |                                     |                              |                    |
|-----------------------|-------------------------------------|------------------------------|--------------------|
| <b>Tampa Electric</b> | <b>V00015</b>                       |                              |                    |
| <b>DATE :</b>         | <b>06/03/25</b>                     | <b>AUTO PAY</b>              |                    |
| <b>INVOICE :</b>      | <b>060325 ACH</b>                   |                              | <b>ACH 6/24</b>    |
| <b>Account No.</b>    | <b>Service Address</b>              | <b>Descrip/Meter</b>         | <b>4/29-5/28</b>   |
| <b>211006939188</b>   | <b>371 CASCADE BEND DR</b>          | <b>1000440749</b>            | <b>\$ 3,093.39</b> |
| <b>211021590925</b>   | <b>201 EAGLE SUMMIT DR, ENTRY</b>   | <b>1000914666</b>            | <b>\$ 23.99</b>    |
| <b>211027989568</b>   | <b>208 EAGLE SUMMIT DR, MAILBOX</b> | <b>1000890863</b>            | <b>\$ 24.17</b>    |
| <b>221008099402</b>   | <b>21ST AVE SE 1ST ST SW</b>        | <b>STREET LIGHTS</b>         | <b>\$ 901.15</b>   |
| <b>211006939329</b>   | <b>368 CASCADE BEND DR</b>          | <b>1000829932</b>            | <b>\$ 513.97</b>   |
| <b>Total (4)</b>      |                                     | <b>543063-53100-5000-001</b> | <b>\$ 4,556.67</b> |



RIVERBEND WEST COMMUNITY  
DEVELOPMENT DISTRICT  
371 CASCADE BEND DR  
RUSKIN, FL 33570-6309

Statement Date: June 03, 2025

Amount Due: \$3,093.39

Due Date: June 24, 2025

Account #: 211006939188

DO NOT PAY. Your account will be drafted on June 24, 2025

## Account Summary

|  |                   |
|--|-------------------|
| Previous Amount Due                      | \$3,072.19        |
| Payment(s) Received Since Last Statement | -\$3,072.19       |
| <b>Current Month's Charges</b>           | <b>\$3,093.39</b> |

**Amount Due by June 24, 2025 \$3,093.39**

Amount not paid by due date may be assessed a late payment charge and an additional deposit.

## Your Energy Insight



Your average daily kWh used was **10.34% lower** than the same period last year.

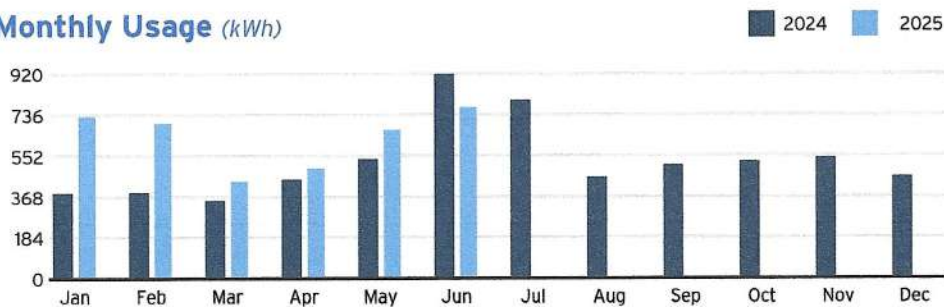


Your average daily kWh used was **23.81% higher** than it was in your previous period.



Scan here to view your account online.

## Monthly Usage (kWh)



Learn about your newly redesigned bill and get deeper insights about your usage by visiting [TECOaccount.com](https://TECOaccount.com)

**An Audit You'll Love**

Our certified experts can uncover ways to save energy and money.

[TampaElectric.com/BizSave](https://TampaElectric.com/BizSave)



To ensure prompt credit, please return stub portion of this bill with your payment.

Account #: 211006939188

Due Date: June 24, 2025



**Pay your bill online at TampaElectric.com**

See reverse side of your paystub for more ways to pay.

Go Paperless, Go Green! Visit [TampaElectric.com/Paperless](https://TampaElectric.com/Paperless) to enroll now.

Amount Due: \$3,093.39

Payment Amount: \$ \_\_\_\_\_

631631342352

Your account will be  
drafted on June 24, 2025

RIVERBEND WEST COMMUNITY DEVELOPMENT DISTRICT  
210 N UNIVERSITY DR, STE 702  
CORAL SPRINGS, FL 33071-7320

Mail payment to:  
TECO  
P.O. BOX 31318  
TAMPA, FL 33631-3318

Make check payable to: TECO  
Please write your account number on the memo line of your check.





**Service For:**  
371 CASCADE BEND DR  
RUSKIN, FL 33570-6309

Account #: 211006939188  
Statement Date: June 03, 2025  
Charges Due: June 24, 2025

## Meter Read

**Service Period:** Apr 29, 2025 - May 28, 2025

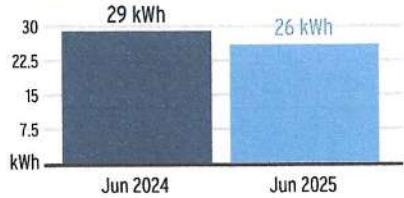
**Rate Schedule:** General Service - Non Demand

| Meter Number | Read Date  | Current Reading | - | Previous Reading | = | Total Used | Multiplier | Billing Period |
|--------------|------------|-----------------|---|------------------|---|------------|------------|----------------|
| 1000440749   | 05/28/2025 | 39,099          |   | 38,330           |   | 769 kWh    | 1          | 30 Days        |

## Charge Details

|  |                         |                 |
|--|-------------------------|-----------------|
| <b>Electric Charges</b>                          |                         |                 |
| Daily Basic Service Charge                       | 30 days @ \$0.63000     | \$18.90         |
| Energy Charge                                    | 769 kWh @ \$0.08641/kWh | \$66.45         |
| Fuel Charge                                      | 769 kWh @ \$0.03391/kWh | \$26.08         |
| Storm Protection Charge                          | 769 kWh @ \$0.00577/kWh | \$4.44          |
| Clean Energy Transition Mechanism                | 769 kWh @ \$0.00418/kWh | \$3.21          |
| Storm Surcharge                                  | 769 kWh @ \$0.02121/kWh | \$16.31         |
| Florida Gross Receipt Tax                        |                         | \$3.47          |
| <b>Electric Service Cost</b>                     |                         | <b>\$138.86</b> |
| State Tax  |                         | \$10.35         |
| <b>Total Electric Cost, Local Fees and Taxes</b> |                         | <b>\$149.21</b> |

## Avg kWh Used Per Day



Billing information continues on next page →

For more information about your bill and understanding your charges, please visit [TampaElectric.com](https://www.tampaelectric.com)

## Ways To Pay Your Bill



### Bank Draft

Visit [TECOaccount.com](https://www.tecoaccount.com) for free recurring or one time payments via checking or savings account.



### In-Person

Find list of Payment Agents at [TampaElectric.com](https://www.tampaelectric.com)



### Mail A Check

**Payments:**  
TECO  
P.O. Box 31318  
Tampa, FL 33631-3318  
Mail your payment in the enclosed envelope.



### Credit or Debit Card

Pay by credit Card using KUBRA EZ-Pay at [TECOaccount.com](https://www.tecoaccount.com). Convenience fee will be charged.



### Phone

Toll Free:  
**866-689-6469**

### All Other

**Correspondences:**  
Tampa Electric  
P.O. Box 111  
Tampa, FL 33601-0111

## Contact Us

### Online:

[TampaElectric.com](https://www.tampaelectric.com)

### Phone:

**Commercial Customer Care:**  
866-832-6249  
**Residential Customer Care:**  
813-223-0800 (Hillsborough)  
863-299-0800 (Polk County)  
888-223-0800 (All Other Counties)

### Hearing Impaired/TTY:

7-1-1

### Power Outage:

877-588-1010

### Energy-Saving Programs:

813-275-3909

**Please Note:** If you choose to pay your bill at a location not listed on our website or provided by Tampa Electric, you are paying someone who is not authorized to act as a payment agent at Tampa Electric. You bear the risk that this unauthorized party will relay the payment to Tampa Electric and do so in a timely fashion. Tampa Electric is not responsible for payments made to unauthorized agents, including their failure to deliver or timely deliver the payment to us. Such failures may result in late payment charges to your account or service disconnection.



**Service For:**  
371 CASCADE BEND DR  
RUSKIN, FL 33570-6309

Account #: 211006939188  
Statement Date: June 03, 2025  
Charges Due: June 24, 2025

**Service Period:** Apr 29, 2025 - May 28, 2025

**Rate Schedule:** Lighting Service

## Charge Details



### Electric Charges

#### Lighting Service Items LS-1 (Bright Choices) for 30 days

|                                   |                         |                   |
|-----------------------------------|-------------------------|-------------------|
| Lighting Energy Charge            | 985 kWh @ \$0.03412/kWh | \$33.61           |
| Fixture & Maintenance Charge      | 49 Fixtures             | \$614.83          |
| Lighting Pole / Wire              | 49 Poles                | \$2061.92         |
| Lighting Fuel Charge              | 985 kWh @ \$0.03363/kWh | \$33.13           |
| Storm Protection Charge           | 985 kWh @ \$0.00559/kWh | \$5.51            |
| Clean Energy Transition Mechanism | 985 kWh @ \$0.00043/kWh | \$0.42            |
| Storm Surcharge                   | 985 kWh @ \$0.01230/kWh | \$12.12           |
| Florida Gross Receipt Tax         |                         | \$2.17            |
| State Tax                         |                         | \$180.47          |
| <b>Lighting Charges</b>           |                         | <b>\$2,944.18</b> |

**Total Current Month's Charges**

**\$3,093.39**



**Service For:**  
371 CASCADE BEND DR  
RUSKIN, FL 33570-6309

Account #: 211006939188  
Statement Date: June 03, 2025  
Charges Due: June 24, 2025

### Important Messages





RIVERBEND WEST COMMUNITY  
DEVELOPMENT DISTRICT  
208 EAGLE SUMMIT DR, ENTRY  
RUSKIN, FL 33570-3303

Statement Date: June 03, 2025

Amount Due: \$23.99

Due Date: June 24, 2025

Account #: 211021590925

DO NOT PAY. Your account will be drafted on June 24, 2025

## Account Summary

Current Service Period: April 29, 2025 - May 28, 2025

|  |          |
|--|----------|
| Previous Amount Due                      | \$25.82  |
| Payment(s) Received Since Last Statement | -\$25.82 |
| Current Month's Charges                  | \$23.99  |

Amount Due by June 24, 2025 \$23.99

Amount not paid by due date may be assessed a late payment charge and an additional deposit.

## Your Energy Insight



Your average daily kWh used was **14.29% lower** than the same period last year.

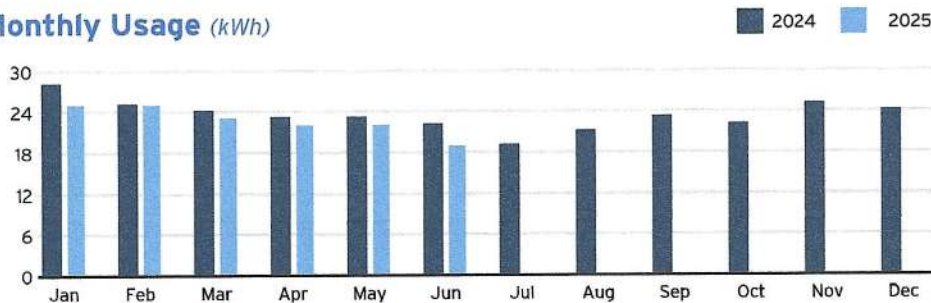


Your average daily kWh used was **14.29% lower** than it was in your previous period.

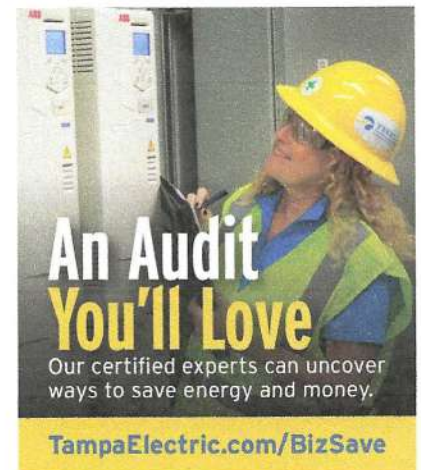


Scan here to view your account online.

## Monthly Usage (kWh)



Learn about your newly redesigned bill and get deeper insights about your usage by visiting [TECOaccount.com](https://TECOaccount.com)



To ensure prompt credit, please return stub portion of this bill with your payment.

Account #: 211021590925

Due Date: June 24, 2025



Pay your bill online at [TampaElectric.com](https://TampaElectric.com)

See reverse side of your paystub for more ways to pay.

Go Paperless, Go Green! Visit [TampaElectric.com/Paperless](https://TampaElectric.com/Paperless) to enroll now.

Amount Due: \$23.99

Payment Amount: \$ \_\_\_\_\_

656322570689

Your account will be  
drafted on June 24, 2025

RIVERBEND WEST COMMUNITY DEVELOPMENT DISTRICT  
210 N UNIVERSITY DR, STE 702  
CORAL SPRINGS, FL 33071-7320

Mail payment to:  
TECO  
P.O. BOX 31318  
TAMPA, FL 33631-3318

Make check payable to: TECO  
Please write your account number on the memo line of your check.



**Service For:**  
208 EAGLE SUMMIT DR  
ENTRY, RUSKIN, FL 33570-3303

Account #: 211021590925  
Statement Date: June 03, 2025  
Charges Due: June 24, 2025

## Meter Read

**Service Period:** Apr 29, 2025 - May 28, 2025

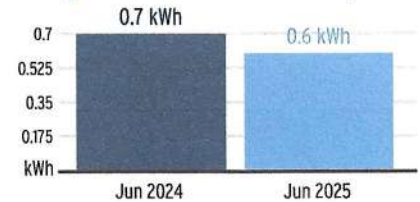
**Rate Schedule:** General Service - Non Demand

| Meter Number | Read Date  | Current Reading | - | Previous Reading | = | Total Used | Multiplier | Billing Period |
|--------------|------------|-----------------|---|------------------|---|------------|------------|----------------|
| 1000914666   | 05/28/2025 | 255             |   | 236              |   | 19 kWh     | 1          | 30 Days        |

## Charge Details

|  |  |                        |                |
|--|--|------------------------|----------------|
|  | <b>Electric Charges</b>                          |                        |                |
|  | Daily Basic Service Charge                       | 30 days @ \$0.63000    | \$18.90        |
|  | Energy Charge                                    | 19 kWh @ \$0.08641/kWh | \$1.64         |
|  | Fuel Charge                                      | 19 kWh @ \$0.03391/kWh | \$0.64         |
|  | Storm Protection Charge                          | 19 kWh @ \$0.00577/kWh | \$0.11         |
|  | Clean Energy Transition Mechanism                | 19 kWh @ \$0.00418/kWh | \$0.08         |
|  | Storm Surcharge                                  | 19 kWh @ \$0.02121/kWh | \$0.40         |
|  | Florida Gross Receipt Tax                        |                        | \$0.56         |
|  | <b>Electric Service Cost</b>                     |                        | <b>\$22.33</b> |
|  | State Tax  |                        | \$1.66         |
|  | <b>Total Electric Cost, Local Fees and Taxes</b> |                        | <b>\$23.99</b> |

## Avg kWh Used Per Day



## Important Messages

**Total Current Month's Charges**

**\$23.99**

For more information about your bill and understanding your charges, please visit [TampaElectric.com](https://www.tampaelectric.com)

## Ways To Pay Your Bill



### Bank Draft

Visit [TECOaccount.com](https://www.tecoaccount.com) for free recurring or one time payments via checking or savings account.



### In-Person

Find list of Payment Agents at [TampaElectric.com](https://www.tampaelectric.com)



### Mail A Check

**Payments:**  
TECO  
P.O. Box 31318  
Tampa, FL 33631-3318  
Mail your payment in the enclosed envelope.



### Credit or Debit Card

Pay by credit Card using KUBRA EZ-Pay at [TECOaccount.com](https://www.tecoaccount.com). Convenience fee will be charged.



### Phone

Toll Free:  
**866-689-6469**

### All Other

**Correspondences:**  
Tampa Electric  
P.O. Box 111  
Tampa, FL 33601-0111

## Contact Us

### Online:

[TampaElectric.com](https://www.tampaelectric.com)

### Phone:

**Commercial Customer Care:**

866-832-6249

**Residential Customer Care:**

813-223-0800 (Hillsborough)

863-299-0800 (Polk County)

888-223-0800 (All Other Counties)

### Hearing Impaired/TTY:

7-1-1

### Power Outage:

877-588-1010

### Energy-Saving Programs:

813-275-3909

**Please Note:** If you choose to pay your bill at a location not listed on our website or provided by Tampa Electric, you are paying someone who is not authorized to act as a payment agent at Tampa Electric. You bear the risk that this unauthorized party will relay the payment to Tampa Electric and do so in a timely fashion. Tampa Electric is not responsible for payments made to unauthorized agents, including their failure to deliver or timely deliver the payment to us. Such failures may result in late payment charges to your account or service disconnection.





**RIVERBEND WEST COMMUNITY  
DEVELOPMENT DISTRICT**  
RIVERBEND WEST COMMUNITY DEVELOPMEN  
208 EAGLE SUMMIT DR, MAILBOX  
RUSKIN, FL 33570-3303

**Statement Date:** June 03, 2025

**Amount Due:** \$24.17

**Due Date:** June 24, 2025

**Account #:** 211027989568

**DO NOT PAY.** Your account will be drafted on June 24, 2025

## Account Summary

**Current Service Period:** April 29, 2025 - May 28, 2025

|  |          |
|--|----------|
| Previous Amount Due                      | \$25.82  |
| Payment(s) Received Since Last Statement | -\$25.48 |
| Miscellaneous Credits                    | -\$0.34  |

|                                |                |
|--------------------------------|----------------|
| <b>Current Month's Charges</b> | <b>\$24.17</b> |
|--------------------------------|----------------|

|                                    |                |
|------------------------------------|----------------|
| <b>Amount Due by June 24, 2025</b> | <b>\$24.17</b> |
|------------------------------------|----------------|

Amount not paid by due date may be assessed a late payment charge and an additional deposit.

## Your Energy Insight



Your average daily kWh used was **16.67% higher** than the same period last year.

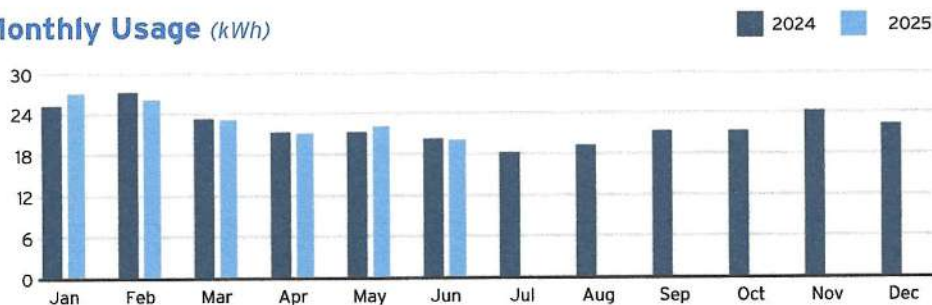


Your average daily kWh used was **0% higher** than it was in your previous period.

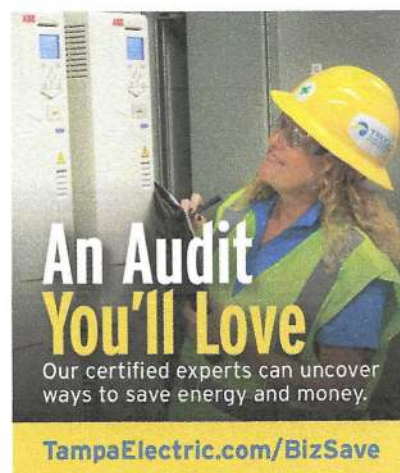


Scan here to view your account online.

## Monthly Usage (kWh)



Learn about your newly redesigned bill and get deeper insights about your usage by visiting [TECOaccount.com](https://TECOaccount.com)



To ensure prompt credit, please return stub portion of this bill with your payment.

**Account #:** 211027989568

**Due Date:** June 24, 2025



**Pay your bill online at [TampaElectric.com](https://TampaElectric.com)**

See reverse side of your paystub for more ways to pay.

Go Paperless, Go Green! Visit [TampaElectric.com/Paperless](https://TampaElectric.com/Paperless) to enroll now.

**Amount Due:** \$24.17

**Payment Amount:** \$ \_\_\_\_\_

688421169132

Your account will be  
drafted on June 24, 2025

RIVERBEND WEST COMMUNITY DEVELOPMENT DISTRICT  
RIVERBEND WEST COMMUNITY DEVELOPMEN  
210 N UNIVERSITY DR, STE 702  
CORAL SPRINGS, FL 33071-7320

Mail payment to:  
TECO  
P.O. BOX 31318  
TAMPA, FL 33631-3318

Make check payable to: TECO  
Please write your account number on the memo line of your check.





**Service For:**  
208 EAGLE SUMMIT DR  
MAILBOX, RUSKIN, FL 33570-3303

Account #: 211027989568  
Statement Date: June 03, 2025  
Charges Due: June 24, 2025

## Meter Read

**Meter Location:** MAILBOXES & DOG PARK

**Service Period:** Apr 29, 2025 - May 28, 2025

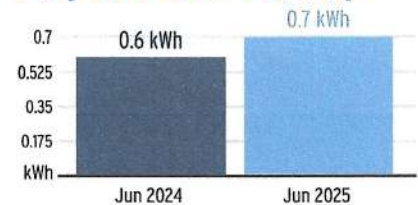
**Rate Schedule:** General Service - Non Demand

| Meter Number | Read Date  | Current Reading | Previous Reading | = | Total Used | Multiplier | Billing Period |
|--------------|------------|-----------------|------------------|---|------------|------------|----------------|
| 1000890863   | 05/28/2025 | 604             | 584              |   | 20 kWh     | 1          | 30 Days        |

## Charge Details

|  |  |                        |                |
|--|--|------------------------|----------------|
|  | <b>Electric Charges</b>                          |                        |                |
|  | Daily Basic Service Charge                       | 30 days @ \$0.63000    | \$18.90        |
|  | Energy Charge                                    | 20 kWh @ \$0.08641/kWh | \$1.73         |
|  | Fuel Charge                                      | 20 kWh @ \$0.03391/kWh | \$0.68         |
|  | Storm Protection Charge                          | 20 kWh @ \$0.00577/kWh | \$0.12         |
|  | Clean Energy Transition Mechanism                | 20 kWh @ \$0.00418/kWh | \$0.08         |
|  | Storm Surcharge                                  | 20 kWh @ \$0.02121/kWh | \$0.42         |
|  | Florida Gross Receipt Tax                        |                        | \$0.56         |
|  | <b>Electric Service Cost</b>                     |                        | <b>\$22.49</b> |
|  | State Tax  |                        | \$1.68         |
|  | <b>Total Electric Cost, Local Fees and Taxes</b> |                        | <b>\$24.17</b> |

## Avg kWh Used Per Day



## Important Messages

**Change in Deposit Interest.** This billing statement reflects a credit of 2 percent interest. This account has had an active deposit for 23 months and, in accordance with the Florida Public Service Commission rules, the interest rate on the deposit for this account has increased to 3 percent going forward.

**Total Current Month's Charges**

**\$24.17**

|  |   |                |
|--|---|----------------|
|  | <b>Miscellaneous Credits</b>                  |                |
|  | Interest for Cash Security Deposit - Electric | -\$0.34        |
|  | <b>Total Current Month's Credits</b>          | <b>-\$0.34</b> |

For more information about your bill and understanding your charges, please visit [TampaElectric.com](http://TampaElectric.com)

## Ways To Pay Your Bill

|  |   |  |   |  |   |
|--|---|--|---|--|---|
|  | <b>Bank Draft</b><br>Visit <a href="http://TECOaccount.com">TECOaccount.com</a> for free recurring or one time payments via checking or savings account.        |  | <b>In-Person</b><br>Find list of Payment Agents at <a href="http://TampaElectric.com">TampaElectric.com</a> |  | <b>Mail A Check</b><br><b>Payments:</b><br>TECO<br>P.O. Box 31318<br>Tampa, FL 33631-3318<br>Mail your payment in the enclosed envelope.<br><br><b>All Other Correspondences:</b><br>Tampa Electric<br>P.O. Box 111<br>Tampa, FL 33601-0111 |
|  | <b>Credit or Debit Card</b><br>Pay by credit Card using KUBRA EZ-Pay at <a href="http://TECOaccount.com">TECOaccount.com</a> . Convenience fee will be charged. |  | <b>Phone</b><br>Toll Free:<br><b>866-689-6469</b>   |  |   |

## Contact Us

|  |  |
|--|--|
| <b>Online:</b><br><a href="http://TampaElectric.com">TampaElectric.com</a>   | <b>Hearing Impaired/TTY:</b><br>7-1-1  |
| <b>Phone:</b><br><b>Commercial Customer Care:</b><br>866-832-6249<br><b>Residential Customer Care:</b><br>813-223-0800 (Hillsborough)<br>863-299-0800 (Polk County)<br>888-223-0800 (All Other Counties) | <b>Power Outage:</b><br>877-588-1010<br><b>Energy-Saving Programs:</b><br>813-275-3909 |

**Please Note:** If you choose to pay your bill at a location not listed on our website or provided by Tampa Electric, you are paying someone who is not authorized to act as a payment agent at Tampa Electric. You bear the risk that this unauthorized party will relay the payment to Tampa Electric and do so in a timely fashion. Tampa Electric is not responsible for payments made to unauthorized agents, including their failure to deliver or timely deliver the payment to us. Such failures may result in late payment charges to your account or service disconnection.



RIVERBEND WEST COMMUNITY  
DEVELOPMENT DISTRICT  
21ST AV SE 1ST ST SW  
RUSKIN, FL 33570-0000

Statement Date: June 03, 2025

Amount Due: \$901.15

Due Date: June 24, 2025

Account #: 221008099402

DO NOT PAY. Your account will be drafted on June 24, 2025

### Account Summary

Current Service Period: April 29, 2025 - May 28, 2025

Previous Amount Due \$900.29

Payment(s) Received Since Last Statement -\$900.29

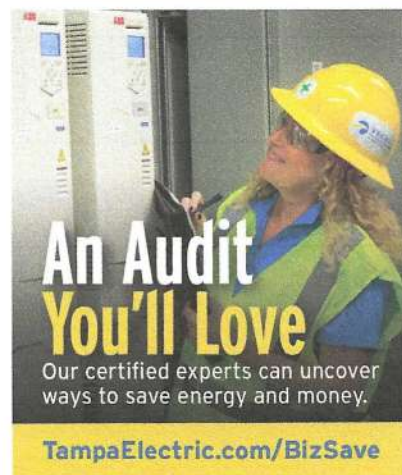
Current Month's Charges \$901.15

Amount Due by June 24, 2025 \$901.15

Amount not paid by due date may be assessed a late payment charge and an additional deposit.



Scan here to view  
your account online.



Learn about your newly redesigned bill and get deeper insights about your usage by visiting [TECOaccount.com](https://TECOaccount.com)



To ensure prompt credit, please return stub portion of this bill with your payment.

Account #: 221008099402

Due Date: June 24, 2025



Pay your bill online at [TampaElectric.com](https://TampaElectric.com)

See reverse side of your paystub for more ways to pay.

Go Paperless, Go Green! Visit [TampaElectric.com/Paperless](https://TampaElectric.com/Paperless) to enroll now.

Amount Due: \$901.15

Payment Amount: \$ \_\_\_\_\_

690890313199

Your account will be  
drafted on June 24, 2025

RIVERBEND WEST COMMUNITY DEVELOPMENT DISTRICT  
210 N UNIVERSITY DR, STE 702  
CORAL SPRINGS, FL 33071-7320

Mail payment to:  
TECO  
P.O. BOX 31318  
TAMPA, FL 33631-3318

Make check payable to: TECO  
Please write your account number on the memo line of your check.





**Service For:**  
21ST AV SE 1ST ST SW  
RUSKIN, FL 33570-0000

Account #: 221008099402  
Statement Date: June 03, 2025  
Charges Due: June 24, 2025

**Service Period:** Apr 29, 2025 - May 28, 2025

**Rate Schedule:** Lighting Service

## Charge Details

## Important Messages



### Electric Charges

#### Lighting Service Items LS-1 (Bright Choices) for 30 days

|                                   |                         |                 |
|-----------------------------------|-------------------------|-----------------|
| Lighting Energy Charge            | 256 kWh @ \$0.03412/kWh | \$8.73          |
| Fixture & Maintenance Charge      | 16 Fixtures             | \$150.08        |
| Lighting Pole / Wire              | 16 Poles                | \$673.28        |
| Lighting Fuel Charge              | 256 kWh @ \$0.03363/kWh | \$8.61          |
| Storm Protection Charge           | 256 kWh @ \$0.00559/kWh | \$1.43          |
| Clean Energy Transition Mechanism | 256 kWh @ \$0.00043/kWh | \$0.11          |
| Storm Surcharge                   | 256 kWh @ \$0.01230/kWh | \$3.15          |
| Florida Gross Receipt Tax         |                         | \$0.56          |
| State Tax                         |                         | \$55.20         |
| <b>Lighting Charges</b>           |                         | <b>\$901.15</b> |

**Total Current Month's Charges**

**\$901.15**

For more information about your bill and understanding your charges, please visit [TampaElectric.com](http://TampaElectric.com)

## Ways To Pay Your Bill



### Bank Draft

Visit [TECOaccount.com](http://TECOaccount.com) for free recurring or one time payments via checking or savings account.



### In-Person

Find list of Payment Agents at [TampaElectric.com](http://TampaElectric.com)



### Mail A Check

**Payments:**  
TECO  
P.O. Box 31318  
Tampa, FL 33631-3318  
Mail your payment in the enclosed envelope.



### Credit or Debit Card

Pay by credit Card using KUBRA EZ-Pay at [TECOaccount.com](http://TECOaccount.com). Convenience fee will be charged.



### Phone

Toll Free:  
**866-689-6469**

### All Other

**Correspondences:**  
Tampa Electric  
P.O. Box 111  
Tampa, FL 33601-0111

## Contact Us

### Online:

[TampaElectric.com](http://TampaElectric.com)

### Phone:

**Commercial Customer Care:**

866-832-6249

**Residential Customer Care:**

813-223-0800 (Hillsborough)

863-299-0800 (Polk County)

888-223-0800 (All Other Counties)

### Hearing Impaired/TTY:

7-1-1

### Power Outage:

877-588-1010

### Energy-Saving Programs:

813-275-3909

**Please Note:** If you choose to pay your bill at a location not listed on our website or provided by Tampa Electric, you are paying someone who is not authorized to act as a payment agent at Tampa Electric. You bear the risk that this unauthorized party will relay the payment to Tampa Electric and do so in a timely fashion. Tampa Electric is not responsible for payments made to unauthorized agents, including their failure to deliver or timely deliver the payment to us. Such failures may result in late payment charges to your account or service disconnection.



RIVERBEND WEST COMMUNITY  
DEVELOPMENT DISTRICT  
368 CASCADE BEND DR  
RUSKIN, FL 33570-6394

Statement Date: June 03, 2025

Amount Due: \$513.97

Due Date: June 24, 2025

Account #: 211006939329

DO NOT PAY. Your account will be drafted on June 24, 2025

## Account Summary

Current Service Period: April 29, 2025 - May 28, 2025

|  |           |
|--|-----------|
| Previous Amount Due                      | \$562.24  |
| Payment(s) Received Since Last Statement | -\$562.24 |
| Current Month's Charges                  | \$513.97  |

Amount Due by June 24, 2025 \$513.97

Amount not paid by due date may be assessed a late payment charge and an additional deposit.

## Your Energy Insight



Your average daily kWh used was **38.03% higher** than the same period last year.

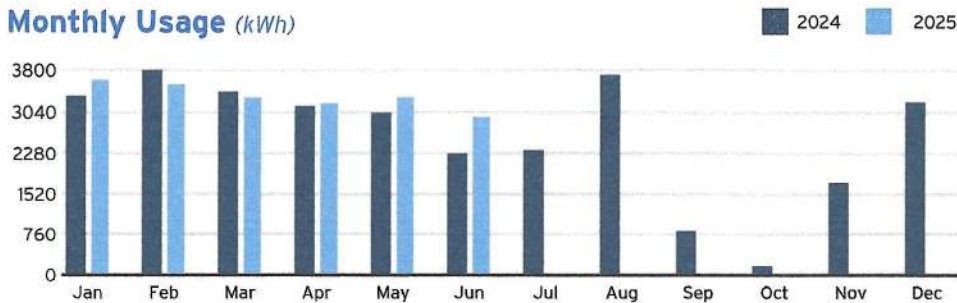


Your average daily kWh used was **4.85% lower** than it was in your previous period.

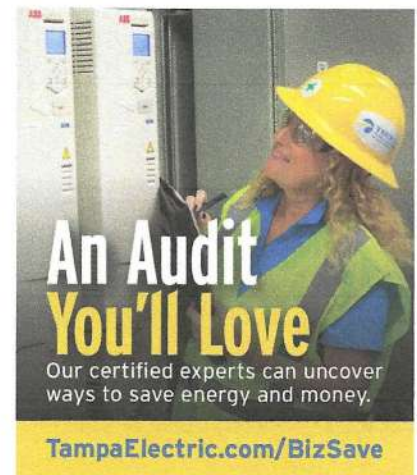


Scan here to view  
your account online.

## Monthly Usage (kWh)



Learn about your newly redesigned bill and get deeper insights about your usage by visiting [TECOaccount.com](https://TECOaccount.com)



To ensure prompt credit, please return stub portion of this bill with your payment.

Account #: 211006939329

Due Date: June 24, 2025



Pay your bill online at [TampaElectric.com](https://TampaElectric.com)

See reverse side of your paystub for more ways to pay.

Go Paperless, Go Green! Visit [TampaElectric.com/Paperless](https://TampaElectric.com/Paperless) to enroll now.

Amount Due: \$513.97

Payment Amount: \$ \_\_\_\_\_

631631342353

Your account will be  
drafted on June 24, 2025

RIVERBEND WEST COMMUNITY DEVELOPMENT DISTRICT  
3903 NORTHDAL BLVD, 250W  
TAMPA, FL 33624

Mail payment to:  
TECO  
P.O. BOX 31318  
TAMPA, FL 33631-3318

Make check payable to: TECO  
Please write your account number on the memo line of your check.





**Service For:**  
368 CASCADE BEND DR  
RUSKIN, FL 33570-6394

Account #: 211006939329  
Statement Date: June 03, 2025  
Charges Due: June 24, 2025

## Meter Read

**Service Period:** Apr 29, 2025 - May 28, 2025

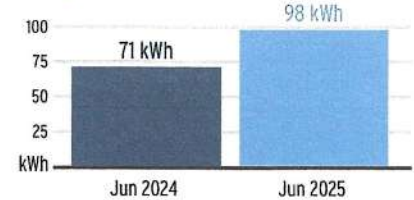
**Rate Schedule:** General Service - Non Demand

| Meter Number | Read Date  | Current Reading | - Previous Reading | = Total Used | Multiplier | Billing Period |
|--------------|------------|-----------------|--------------------|--------------|------------|----------------|
| 1000829932   | 05/28/2025 | 41,253          | 38,299             | 2,954 kWh    | 1          | 30 Days        |

## Charge Details

|  |                           |                 |
|--|---------------------------|-----------------|
| <b>Electric Charges</b>                          |                           |                 |
| Daily Basic Service Charge                       | 30 days @ \$0.63000       | \$18.90         |
| Energy Charge                                    | 2,954 kWh @ \$0.08641/kWh | \$255.26        |
| Fuel Charge                                      | 2,954 kWh @ \$0.03391/kWh | \$100.17        |
| Storm Protection Charge                          | 2,954 kWh @ \$0.00577/kWh | \$17.04         |
| Clean Energy Transition Mechanism                | 2,954 kWh @ \$0.00418/kWh | \$12.35         |
| Storm Surcharge                                  | 2,954 kWh @ \$0.02121/kWh | \$62.65         |
| Florida Gross Receipt Tax                        |                           | \$11.96         |
| <b>Electric Service Cost</b>                     |                           | <b>\$478.33</b> |
| State Tax  |                           | \$35.64         |
| <b>Total Electric Cost, Local Fees and Taxes</b> |                           | <b>\$513.97</b> |

## Avg kWh Used Per Day



## Important Messages

**Total Current Month's Charges**

**\$513.97**

For more information about your bill and understanding your charges, please visit [TampaElectric.com](https://www.tampaelectric.com)

## Ways To Pay Your Bill



### Bank Draft

Visit [TECOaccount.com](https://www.tecoaccount.com) for free recurring or one time payments via checking or savings account.



### In-Person

Find list of Payment Agents at [TampaElectric.com](https://www.tampaelectric.com)



### Mail A Check

**Payments:**  
TECO  
P.O. Box 31318  
Tampa, FL 33631-3318  
Mail your payment in the enclosed envelope.



### Credit or Debit Card

Pay by credit Card using KUBRA EZ-Pay at [TECOaccount.com](https://www.tecoaccount.com). Convenience fee will be charged.



### Phone

Toll Free:  
**866-689-6469**

### All Other

**Correspondences:**  
Tampa Electric  
P.O. Box 111  
Tampa, FL 33601-0111

## Contact Us

### Online:

[TampaElectric.com](https://www.tampaelectric.com)

### Phone:

**Commercial Customer Care:**

866-832-6249

**Residential Customer Care:**

813-223-0800 (Hillsborough)

863-299-0800 (Polk County)

888-223-0800 (All Other Counties)

### Hearing Impaired/TTY:

7-1-1

### Power Outage:

877-588-1010

### Energy-Saving Programs:

813-275-3909

**Please Note:** If you choose to pay your bill at a location not listed on our website or provided by Tampa Electric, you are paying someone who is not authorized to act as a payment agent at Tampa Electric. You bear the risk that this unauthorized party will relay the payment to Tampa Electric and do so in a timely fashion. Tampa Electric is not responsible for payments made to unauthorized agents, including their failure to deliver or timely deliver the payment to us. Such failures may result in late payment charges to your account or service disconnection.

# RIVERBEND WEST CDD

## DISTRICT CHECK REQUEST

**Today's Date** 6/9/2025

**Payable To** Riverbend West CDD

**Check Amount** **\$963.01**

**Check Description** Series 2016 - FY 25 Tax Dist. ID 726

**Check Amount** **\$324.09**

**Check Description** Series 2019 - FY 25 Tax Dist. ID 726

**Special Instructions** Do not mail. Please give to Eric

(Please attach all supporting documentation: invoices, receipts, etc.)

*ERIC*

\_\_\_\_\_  
Authorization

|             |  |
|-------------|--|
| DM          |  |
| Fund        | <u>001</u>   |
| G/L         | <u>20702</u>   |
| Object Code |  |
| Chk #       | <u>                </u> Date <u>                </u> |



# RIVERBEND WEST CDD

## TAX REVENUE RECEIPTS AND TRANSFER SCHEDULE

Fiscal Year 2025, Tax Year 2024

|           | Dollar Amounts | Fiscal Year 2025 Percentages |          |
|-----------|----------------|------------------------------|----------|
| Net O&M   | \$ 340,497.77  | 45.63%                       | 0.456270 |
| Net DS 16 | \$ 303,598.63  | 40.68%                       | 0.406820 |
| Net DS 19 | \$ 102,174.24  | 13.69%                       | 0.136910 |
| Net Total | 746,270.64     | 100.00%                      | 100.00%  |

| Date Received                         | Amount Received   | 45.63%                               | 45.63%                           | 40.68%                                     | 13.69%                                     | Proof  | Date Transferred / Distribution ID | Notes / CDD check # |
|---------------------------------------|-------------------|--------------------------------------|----------------------------------|--|--|--------|------------------------------------|---------------------|
|                                       |                   | Raw Numbers<br>Operations<br>Revenue | Rounded<br>Operations<br>Revenue | Rounded<br>2016 Debt<br>Service<br>Revenue | Rounded<br>2019 Debt<br>Service<br>Revenue |        |                                    |                     |
| 11/6/2024                             | 2,159.28          | 985.21                               | 985.21                           | 878.44                                     | 295.63                                     | -      | 695                                | 100028              |
| 11/15/2024                            | 2,206.29          | 1,006.66                             | 1,006.66                         | 897.56                                     | 302.06                                     | (0.01) | 697                                | 100028              |
| 11/22/2024                            | 2,206.29          | 1,006.66                             | 1,006.66                         | 897.56                                     | 302.06                                     | (0.01) | 698                                | 100028              |
| 12/6/2024                             | 589,981.18        | 269,190.71                           | 269,190.71                       | 240,016.14                                 | 80,774.32                                  | (0.01) | 706                                | 100028              |
| 12/3/2024                             | 4,412.59          | 2,013.33                             | 2,013.33                         | 1,795.13                                   | 604.13                                     | -      | 700                                | 100028/             |
| 12/16/2024                            | 33,127.11         | 15,114.91                            | 15,114.91                        | 13,476.77                                  | 4,535.43                                   | -      | 707                                | 100028/             |
| 1/7/2025                              | 87,415.84         | 39,885.23                            | 39,885.23                        | 35,562.51                                  | 11,968.10                                  | 0.00   | 709                                | 1165                |
| 2/7/2025                              | 9,368.18          | 4,274.42                             | 4,274.42                         | 3,811.16                                   | 1,282.60                                   | -      | 713                                | 1170                |
| 3/10/2025                             | 3,496.00          | 1,595.12                             | 1,595.12                         | 1,422.24                                   | 478.64                                     | (0.00) | 716                                | 1175                |
| 4/7/2025                              | 3,622.23          | 1,652.71                             | 1,652.71                         | 1,473.60                                   | 495.92                                     | -      | 719                                | 1177                |
| 5/7/2025                              | 2,972.69          | 1,356.35                             | 1,356.35                         | 1,209.35                                   | 406.99                                     | (0.00) | 723                                | 1180                |
| 6/9/2025                              | 2,367.16          | 1,080.06                             | 1,080.06                         | 963.01                                     | 324.09                                     | -      | 726                                |                     |
|                                       |                   | -                                    | -                                | -  | -  | -      |                                    |                     |
|                                       |                   | -                                    | -                                | -  | -  | -      |                                    |                     |
|                                       |                   | -                                    | -                                | -  | -  | -      |                                    |                     |
|                                       |                   | -                                    | -                                | -  | -  | -      |                                    |                     |
| <b>TOTAL</b>                          | <b>743,334.84</b> | 339,161.39                           | 339,161.39                       | 302,403.48                                 | 101,769.97                                 | -      |                                    |                     |
| <b>Net Total on Roll</b>              | 746,270.64        |                                      | 340,497.77                       | 303,598.63                                 | 102,174.24                                 |        |                                    |                     |
| <b>Collection Surplus / (Deficit)</b> | (2,935.80)        |                                      | (1,336.38)                       | (1,195.15)                                 | (404.27)                                   |        |                                    |                     |

# RIVERBEND WEST COMMUNITY DEVELOPMENT DISTRICT

## Payment Register by Fund

For the Period from 07/01/2025 to 07/31/2025

(Sorted by Check / ACH No.)

| Fund No. | Check / ACH No. | Date | Payee | Invoice No. | Payment Description | Invoice / GL Description | G/L Account # | Amount Paid |
|----------|-----------------|------|-------|-------------|---------------------|--------------------------|---------------|-------------|
|----------|-----------------|------|-------|-------------|---------------------|--------------------------|---------------|-------------|

### **GENERAL FUND - 001**

|                   |        |          |                                 |                 |  |                        |              |                    |
|-------------------|--------|----------|---------------------------------|-----------------|--|------------------------|--------------|--------------------|
| 001               | 100072 | 07/03/25 | STRALEY ROBIN VERICKER          | 26144           | GEN COUNSEL THRU FEB 2025                                  | District Counsel       | 531146-51401 | \$279.50           |
| 001               | 100073 | 07/03/25 | ADVANCED AQUATIC SERVICES, INC. | 10559559        | June 2025 Aquatic Maintenance                              | aquatics maintenance   | 546995-53900 | \$1,352.00         |
| 001               | 100074 | 07/08/25 | PINE LAKE NURSERY LLC           | 7652            | July 2025 Landscape Maintenance                            | landscape maintenance  | 546300-53900 | \$7,077.90         |
| 001               | 100075 | 07/15/25 | PINE LAKE NURSERY LLC           | 7752            | Stuck irrigation valve in front of the Riverbend West sign | IRR REPAIRS            | 546041-53900 | \$606.38           |
| 001               | 100075 | 07/15/25 | PINE LAKE NURSERY LLC           | 7757            | Remove Tree from ditch 7                                   | tree removal           | 546515-53900 | \$453.96           |
| 001               | 100076 | 07/15/25 | STRALEY ROBIN VERICKER          | 26776           | District Counsel through June 30, 2025                     | District Counsel       | 531146-51401 | \$35.00            |
| 001               | 100077 | 07/23/25 | INFRAMARK LLC                   | 154334          | 2025 Postage and Go Daddy                                  | postage                | 541006-51301 | \$1.38             |
| 001               | 100077 | 07/23/25 | INFRAMARK LLC                   | 154334          | 2025 Postage and Go Daddy                                  | go daddy               | 549001-51301 | \$25.50            |
| 001               | 100078 | 07/23/25 | FIELDS CONSULTING GROUP,LLC     | 3609            | July 2025 Sign Replacement in Phase Three                  | sign replacement       | 549900-58200 | \$150.00           |
| 001               | 100079 | 07/23/25 | BGE INC                         | 25118           | July 27, 2025 District Engineer Services                   | District Engineer      | 531147-51301 | \$2,179.68         |
| 001               | 100080 | 07/28/25 | OBSERVER MEDIA GROUP,INC.       | 25-02066H       | Legal Advertisement for Public Hearing on FY 25/26 Budget  | Legal Advertising      | 548002-51301 | \$306.25           |
| 001               | 1185   | 07/07/25 | INFRAMARK LLC                   | 153025          | July 2025 District Management, Field and Porter            | FIELD OPERATIONS JUL24 | 531185-53900 | \$600.00           |
| 001               | 1185   | 07/07/25 | INFRAMARK LLC                   | 153025          | July 2025 District Management, Field and Porter            | ADMIN FEES JUL24       | 531150-51301 | \$4,204.00         |
| 001               | 1185   | 07/07/25 | INFRAMARK LLC                   | 153025          | July 2025 District Management, Field and Porter            | PORTER SERVICES        | 552160-57201 | \$220.00           |
| 001               | 1187   | 07/18/25 | BETH BELLEMORE                  | 07162025        | July 2025 Refund Bill for Water                            | water bill             | 549001-58200 | \$50.00            |
| 001               | 300011 | 07/02/25 | BOCC - ACH                      | 063025-1492 ACH | May 27, 2025 - June 25, 2025 Water Bill                    | Water Bill             | 543063-53601 | \$205.43           |
| 001               | 300012 | 07/14/25 | TECO ACH                        | 070225 ACH      | May 29, 2025 - June 26, 2025 Electric Bill                 | Electric               | 543063-53100 | \$4,622.86         |
| <b>Fund Total</b> |        |          |                                 |                 |  |                        |              | <b>\$22,369.84</b> |

### **SERIES 2016 DEBT SERVICE FUND - 200**

|                   |      |          |                            |                |                      |                                  |        |                   |
|-------------------|------|----------|----------------------------|----------------|----------------------|----------------------------------|--------|-------------------|
| 200               | 1186 | 07/08/25 | Riverbend West C/O US BANK | 06182025 - 728 | FY25 TAX DIST ID 728 | SERIES 2016 FY25 TAX DIST ID 728 | 103200 | \$1,926.02        |
| <b>Fund Total</b> |      |          |                            |                |                      |                                  |        | <b>\$1,926.02</b> |

### **SERIES 2019 DEBT SERVICE FUND - 201**

|                   |      |          |                            |                |                      |                                  |        |                 |
|-------------------|------|----------|----------------------------|----------------|----------------------|----------------------------------|--------|-----------------|
| 201               | 1186 | 07/08/25 | Riverbend West C/O US BANK | 06182025 - 728 | FY25 TAX DIST ID 728 | SERIES 2019 FY25 TAX DIST ID 728 | 103200 | \$648.18        |
| <b>Fund Total</b> |      |          |                            |                |                      |                                  |        | <b>\$648.18</b> |

|                          |                    |
|--------------------------|--------------------|
| <b>Total Checks Paid</b> | <b>\$24,944.04</b> |
|--------------------------|--------------------|

# Straley Robin Vericker

1510 W. Cleveland Street

Tampa, FL 33606

Telephone (813) 223-9400

Federal Tax Id. - 20-1778458

Riverbend West CDD  
c/o Inframark  
210 N. University Drive, Ste. 702  
Coral Springs, FL 33071

March 12, 2025

Client: 001469

Matter: 000001

Invoice #: 26144

Page: 1

RE: General

For Professional Services Rendered Through February 28, 2025

## SERVICES

| Date                        | Person | Description of Services  | Hours | Amount   |
|-----------------------------|--------|--|-------|----------|
| 2/11/2025                   | LC     | REVIEW CORRESPONDENCE FROM J. GASKINS RE FAILURE TO FILE FISCAL YEAR 2022-2023 ANNUAL FINANCIAL REPORT AND AUDIT REPORTS; PREPARE CORRESPONDENCE TO DISTRICT MANAGER RE STATUS OF SAME.  | 0.3   | \$52.50  |
| 2/12/2025                   | CAW    | REVIEW EMAIL CORRESPONDENCE FROM J. GASKINS AND N. SOWANI REGARDING OUTSTANDING ANNUAL FINANCIAL REPORT AND AUDIT REPORT; REVIEW RESPONSE LETTER TO J. GASKINS WITH STATUS OF FILED REPORTS.                                     | 0.2   | \$61.00  |
| 2/12/2025                   | LC     | CORRESPONDENCE TO AND FROM N. SOWANI RE STATUS OF FILING ANNUAL FINANCIAL REPORT (AFR) AND AUDIT REPORT FOR FISCAL YEAR ENDED SEPTEMBER 30, 2023; REVIEW AFR AND DATE FILED; PREPARE DRAFT CORRESPONDENCE TO J. GASKINS RE SAME. | 0.6   | \$105.00 |
| 2/13/2025                   | CAW    | REVIEW AGENDA FOR FEBRUARY 17TH BOARD MEETING; CORRESPONDENCE WITH K. COLE REGARDING MEETING.  | 0.2   | \$61.00  |
| Total Professional Services |        |  | 1.3   | \$279.50 |

March 12, 2025  
Client: 001469  
Matter: 000001  
Invoice #: 26144

Page: 2

---

|                        |          |                 |
|------------------------|----------|-----------------|
| Total Services         | \$279.50 |                 |
| Total Disbursements    | \$0.00   |                 |
| Total Current Charges  |          | \$279.50        |
| Previous Balance       |          | \$571.50        |
| Less Payments          |          | (\$571.50)      |
| <b>PAY THIS AMOUNT</b> |          | <b>\$279.50</b> |

***Please Include Invoice Number on all Correspondence***

Advanced Aquatic Services Inc.  
292 South Military Trail  
Deerfield Beach, FL 33442  
954-596-2127

|            |
|------------|
| 7/1/2025   |
| 10559559   |
| \$1,352.00 |

|   |
|---|
| Bill To   |
| Riverbend West CDD<br>c/o INFRAMARK<br>11555 Heron Bay Blvd., Ste. 201<br>Coral Springs, FL 33076 |

|           |
|-----------|
| Due Date  |
| Net 30    |
| 7/31/2025 |

Monthly Pond and Ditch Maintenance.  
Includes Quarterly Buffer Area Maintenance.

1,352.00

\*\*\*THE INVOICE DATE ABOVE INDICATES MONTH SERVICES WILL BE  
PERFORMED\*\*\*

Advanced Aquatic Services Inc.  
292 South Military Trail  
Deerfield Beach, FL 33442  
954-596-2127

\$1,352.00





12980 Tarpon Springs Road  
Odessa, FL 33556

pinelakellc.com

## INVOICE

| Date     | Invoice No. |
|----------|-------------|
| 07/01/25 | 7652        |
| Terms    | Due Date    |
| Net 30   | 07/31/25    |

### BILL TO

Kristee Cole  
Inframark  
313 Campus Street  
Celebration, FL 34747

### PROPERTY

Riverbend West CDD  
368 Cascade Bend Dr.  
Ruskin, FL 33570

| Amount Due | Enclosed |
|------------|----------|
| \$7,077.90 |          |

*Please detach top portion and return with your payment.*

| QTY | ITEM   | UNIT PRICE | EXT PRICE         | SALES TAX     | LINE TOTAL        |
|-----|--|------------|-------------------|---------------|-------------------|
|     | #4703 - Riverbend West CDD<br>24-25 RENEWAL July 2025  |            | \$7,077.90        | \$0.00        | \$7,077.90        |
|     | #4703 - Riverbend West CDD 24<br>-25 RENEWAL July 2025 |            | \$7,077.90        | \$0.00        | \$7,077.90        |
|     | <b>Total</b>   |            | <b>\$7,077.90</b> | <b>\$0.00</b> | <b>\$7,077.90</b> |



12980 Tarpon Springs Road  
Odessa, FL 33556

pinelakellc.com

## INVOICE

| Date     | Invoice No. |
|----------|-------------|
| 07/09/25 | 7752        |
| Terms    | Due Date    |
| Net 30   | 08/08/25    |

| BILL TO   |
|---|
| Kristee Cole<br>Inframark<br>313 Campus Street<br>Celebration, FL 34747 |

| PROPERTY   |
|--|
| Riverbend West CDD<br>368 Cascade Bend Dr.<br>Ruskin, FL 33570 |

| Amount Due | Enclosed |
|------------|----------|
| \$606.38   |          |

Please detach top portion and return with your payment.

| QTY | ITEM | UNIT PRICE | EXT PRICE | SALES TAX | LINE TOTAL |
|-----|------|------------|-----------|-----------|------------|
|     |      |            | \$606.38  | \$0.00    | \$606.38   |

Pine Lake Services, LLC  
would like to thank you for the  
opportunity to bid. We look  
forward to working with you on  
this project. If you have any  
questions, please feel free to  
contact us at any time at  
projects@pinelakeLLC.com or  
(813) 948-4736.

Replace 1.5 inch Valve located  
in front of Riverbend west  
sign. it was stuck since  
7/1/2025. it was notice on  
7/2/2025

|                        |                 |               |                 |
|------------------------|-----------------|---------------|-----------------|
| Irrigation Enhancement | \$606.38        | \$0.00        | \$606.38        |
| <b>Total</b>           | <b>\$606.38</b> | <b>\$0.00</b> | <b>\$606.38</b> |



12980 Tarpon Springs Road  
Odessa, FL 33556

pinelakellc.com

## INVOICE

| Date     | Invoice No. |
|----------|-------------|
| 07/09/25 | 7757        |
| Terms    | Due Date    |
| Net 30   | 08/08/25    |

| BILL TO   |
|---|
| Kristee Cole<br>Inframark<br>313 Campus Street<br>Celebration, FL 34747 |

| PROPERTY   |
|--|
| Riverbend West CDD<br>368 Cascade Bend Dr.<br>Ruskin, FL 33570 |

| Amount Due | Enclosed |
|------------|----------|
| \$453.96   |          |

Please detach top portion and return with your payment.

| QTY | ITEM | UNIT PRICE | EXT PRICE | SALES TAX | LINE TOTAL |
|-----|------|------------|-----------|-----------|------------|
|     |      |            | \$453.96  | \$0.00    | \$453.96   |

Pine Lake Services, LLC  
would like to thank you for the  
opportunity to bid. We look  
forward to working with you on  
this project. If you have any  
questions, please feel free to  
contact us at any time at  
projects@pinelakeLLC.com or  
(813) 948-4736.

|   |                 |               |                 |
|---|-----------------|---------------|-----------------|
| Remove Tree from item # 12 on<br>field Report | \$453.96        | \$0.00        | \$453.96        |
| <b>Total</b>                                  | <b>\$453.96</b> | <b>\$0.00</b> | <b>\$453.96</b> |

# Straley Robin Vericker

1510 W. Cleveland Street

Tampa, FL 33606

Telephone (813) 223-9400

Federal Tax Id. - 20-1778458

Riverbend West CDD  
210 N. University Drive, Ste. 702  
Coral Springs, FL 33071

July 09, 2025

Client: 001469

Matter: 000001

Invoice #: 26776

Page: 1

RE: General

For Professional Services Rendered Through June 30, 2025

## SERVICES

| Date                        | Person | Description of Services  | Hours   | Amount          |
|-----------------------------|--------|--|---------|-----------------|
| 6/5/2025                    | AM     | REVISE, FINALIZE AND TRANSMIT FINAL PUBLICATION ADS, MAILED NOTICE LETTER AND RESOLUTIONS WITH INSTRUCTIONS. | 0.2     | \$35.00         |
| Total Professional Services |        |  | 0.2     | \$35.00         |
| Total Services              |        |  | \$35.00 |                 |
| Total Disbursements         |        |  | \$0.00  |                 |
| Total Current Charges       |        |  |         | \$35.00         |
| Previous Balance            |        |  |         | \$1,219.00      |
| Less Payments               |        |  |         | (\$939.50)      |
| <b>PAY THIS AMOUNT</b>      |        |  |         | <b>\$314.50</b> |

***Please Include Invoice Number on all Correspondence***

Outstanding Invoices

| Invoice Number              | Invoice Date   | Services | Disbursements | Interest | Tax    | Total    |
|-----------------------------|----------------|----------|---------------|----------|--------|----------|
| 26144                       | March 12, 2025 | \$279.50 | \$0.00        | \$0.00   | \$0.00 | \$314.50 |
| Total Remaining Balance Due |                |          |               |          |        | \$314.50 |

AGED ACCOUNTS RECEIVABLE

| 0-30 Days | 31-60 Days | 61-90 Days | Over 90 Days |
|-----------|------------|------------|--------------|
| \$35.00   | \$0.00     | \$0.00     | \$279.50     |





# INVOICE

2002 West Grand Parkway North  
Suite 100  
Katy, TX 77449

**INVOICE#**

154334

**DATE**

7/16/2025

**BILL TO**

Riverbend West Community  
Development District  
313 Campus St  
Celebration FL 34747-4982  
United States

**CUSTOMER ID**

C3041

**NET TERMS**

Due On Receipt

**PO#****DUE DATE**

7/16/2025

Services provided for the Month of: June 2025

| DESCRIPTION   | QTY | UOM | RATE  | MARKUP | AMOUNT       |
|---|-----|-----|-------|--------|--------------|
| Postage   | 1   | Ea  | 1.38  |        | 1.38         |
| Sandra H Demarco 05-28-25 DNH*GODADDY#376291673 :<br>Domain Renewals - Riverbend West \$25.50 | 1   | Ea  | 25.50 |        | 25.50        |
| <b>Subtotal</b>   |     |     |       |        | <b>26.88</b> |

**Subtotal**

\$26.88

**Tax**

\$0.00

**Total Due**

\$26.88

**Remit To : Inframark LLC, PO BOX 733778, Dallas, Texas, 75373-3778**

*To pay by Credit Card, please contact us at 281-578-4299, 9:00am - 5:30pm EST, Monday – Friday. A surcharge fee may apply.*

*To pay via ACH or Wire, please refer to our banking information below:*

*Account Name: INFRAMARK, LLC*

*ACH - Bank Routing Number: 111000614 / Account Number: 912593196*

*Wire - Bank Routing Number: 021000021 / SWIFT Code: CHASUS33 / Account Number: 912593196*

*Please include the Customer ID and the Invoice Number on your form of payment.*

Fields Consulting Group, LLC (dba. Mike's Signs)  
11749 Crestridge Loop  
Trinity, FL 34655-0017 USA  
signsandgraphicsbymike@gmail.com

*Fields*  
CONSULTING GROUP, LLC  
11749 Crestridge Loop  
Trinity, FL 34655



## INVOICE

### BILL TO

Inframark  
River Bend West CDD  
Attn: Kristee Cole  
211750 N. University Dr., Ste 702  
Coral Springs, FL 34747

INVOICE # 3609

DATE 07/14/2025

DUE DATE 08/01/2025

TERMS Due on receipt

### SHIP DATE

12/19/2023

### SALES REP

Mike Fields

| DATE | ACTIVITY                | DESCRIPTION  | QTY | RATE  | AMOUNT |
|------|-------------------------|--|-----|-------|--------|
|      | Printing & Reproduction | Custom "Pond Signs" -- (1) English version + (1) Spanish version (12x18) durable metal signs with rounded corners. Full color print on front. Includes installation on existing u-channel post with bolt hardware + JB Weld. | 2   | 75.00 | 150.00 |

|             |                 |
|-------------|-----------------|
| SUBTOTAL    | 150.00          |
| TAX         | 0.00            |
| TOTAL       | 150.00          |
| BALANCE DUE | <b>\$150.00</b> |



# INVOICE

Kristee Cole  
Riverbend West Community Development District  
313 Campus Street  
Celebration, FL 34747

July 8, 2025  
Project No: 00015142-00  
Invoice No: 25118

Project 00015142-00 Riverbend West CDD District Engineering Services  
Site visit to assess drainage ditch issue; Prepare summary of observations and provide suggestions and opinion of cost;

**Services current through June 27, 2025**

**Professional Personnel**

|                    | <b>Hours</b> | <b>Rate</b> | <b>Amount</b> |                 |
|--------------------|--------------|-------------|---------------|-----------------|
| Director I         | 4.50         | 280.00      | 1,260.00      |                 |
| Intern             | 9.50         | 90.00       | 855.00        |                 |
| Totals             | 14.00        |             | 2,115.00      |                 |
| <b>Total Labor</b> |              |             |               | <b>2,115.00</b> |

**Reimbursable Expenses**

|                             |  |  |              |              |
|-----------------------------|--|--|--------------|--------------|
| R-Project Travel & Subsist. |  |  | 64.68        |              |
| <b>Total Reimbursables</b>  |  |  | <b>64.68</b> | <b>64.68</b> |

**Total this Invoice \$2,179.68**

BBE/L  
inframarkcms@payableslockbox.com; Kristee.cole@inframark.com

# Billing Backup

Tuesday, July 8, 2025

BGE, Inc.

Invoice 25118 Dated 7/8/2025

2:01:39 PM

|         |             |  |
|---------|-------------|--|
| Project | 00015142-00 | Riverbend West CDD District Engineering Services |
|---------|-------------|--|

## Professional Personnel

|               |                    |  | Hours | Rate   | Amount   |                 |
|---------------|--------------------|--|-------|--------|----------|-----------------|
| Director I    |                    |  |       |        |          |                 |
| Chang, Philip | 6/6/2025           |  | .50   | 280.00 | 140.00   |                 |
| Chang, Philip | 6/9/2025           |  | 2.50  | 280.00 | 700.00   |                 |
| Chang, Philip | 6/15/2025          |  | 1.00  | 280.00 | 280.00   |                 |
| Chang, Philip | 6/16/2025          |  | .50   | 280.00 | 140.00   |                 |
| Intern        |                    |  |       |        |          |                 |
| Huerta, Kent  | 6/9/2025           |  | 9.50  | 90.00  | 855.00   |                 |
|               | Totals             |  | 14.00 |        | 2,115.00 |                 |
|               | <b>Total Labor</b> |  |       |        |          | <b>2,115.00</b> |

## Reimbursable Expenses

|                             |                            |   |  |                           |              |                   |
|-----------------------------|----------------------------|---|--|---------------------------|--------------|-------------------|
| R-Project Travel & Subsist. |                            |   |  |                           |              |                   |
| 000000077305                | 6/9/2025                   | Chang, Philip / Site visit - Riverbend CDD /<br>Site visit to observe erosion at drainage<br>ditch to 7th St. SW / 84.00 miles @ 0.70 |  |                           | 64.68        |                   |
|                             | <b>Total Reimbursables</b> |   |  |                           | <b>64.68</b> | <b>64.68</b>      |
|                             |                            |   |  | <b>Total this Project</b> |              | <b>\$2,179.68</b> |
|                             |                            |   |  | <b>Total this Report</b>  |              | <b>\$2,179.68</b> |

REMIT TO: BGE, Inc. • 10777 Westheimer • Suite 400 • Houston, Texas 77042

INVOICE PAYABLE UPON RECEIPT

# Business Observer

1970 Main Street  
3rd Floor  
Sarasota, FL 34236  
, 941-906-9386 x322

## INVOICE

Legal Advertising

Invoice # 25-02066H

Date 07/18/2025

Attn:  
Riverbend West CDD - Inframark  
313 CAMPUS STREET  
CELEBRATION FL 34747

Please make checks payable to:  
(Please note Invoice # on check)  
Business Observer  
1970 Main Street  
3rd Floor  
Sarasota, FL 34236

### Description

### Amount

Serial # 25-02066H

\$306.25

**Notice of Public Hearing and Board of Supervisors Meeting**  
**RE:** Riverbend West CDD Fiscal Year 2025-2026 Proposed Budget Board of  
Supervisors Meeting on 8/18/25 @ 6:00 PM  
**Published:** 7/18/2025

### Important Message

Please include our Serial #  
on your check

Pay by credit card online:  
[https://legals.  
businessobserverfl.  
com/send-payment/](https://legals.businessobserverfl.com/send-payment/)

|       |          |
|-------|----------|
| Paid  | ()       |
| Total | \$306.25 |

Payment is expected within 30 days of the  
first publication date of your notice.

Attention: If you are a government agency and you believe that you qualify for a 15% discount to the second insertion of your notice per F.S. revision 50.061, please inform Kristen Boothroyd directly at 941-906-9386 x323.

### NOTICE

The Business Observer makes every effort to ensure that its public notice advertising is accurate and in full compliance with all applicable statutes and ordinances and that its information is correct. Nevertheless, we ask that our advertisers scrutinize published ads carefully and alert us immediately to any errors so that we may correct them as soon as possible. We cannot accept responsibility for mistakes beyond bearing the cost of republishing advertisements that contain errors.

Notice of Public Hearing and Board of Supervisors Meeting of the  
Riverbend West Community Development District

The Board of Supervisors (the "Board") of the Riverbend West Community Development District (the "District") will hold a public hearing and a meeting on Monday, August 18, 2025, at 6:00 p.m. at the SouthShore Regional Library located at 15816 Beth Shields Way, Ruskin, Florida 33573.

The purpose of the public hearing is to receive public comments on the proposed adoption of the District's fiscal year 2025-2026 proposed budget and the proposed levy of its annually recurring non-ad valorem special assessments for operation and maintenance to fund the items described in the proposed budget (the "O&M Assessments").

At the conclusion of the public hearing, the Board will, by resolution, adopt a final budget, provide for the levy, collection, and enforcement of the O&M Assessments, and certify an assessment roll. A meeting of the Board will also be held, where the Board may consider any other business that may properly come before it.

A copy of the proposed budget, preliminary assessment roll, and the agenda may be viewed on the District's website at least 2 days before the meeting <https://www.riverbendwestcd.com/> or may be obtained by contacting the District Manager's office via email at [kristee.cole@inframark.com](mailto:kristee.cole@inframark.com) or via phone at 813-382-7355.

The table below presents the proposed schedule of the O&M Assessments. Amounts are preliminary and subject to change at the meeting and in any future year.

| LOT SIZE              | OM Units | Proposed maximum annual FY 2025-2026 O&M Assessment | Last Year's FY 2024-2025 O&M Assessment | % Increase | Annual \$ Increase | Monthly \$ Increase |
|-----------------------|----------|---|---|------------|--------------------|---------------------|
| Single Family         | 233      | \$2,207.61  | \$1,068.53                              | 106.6%     | \$1,139.08         | \$94.92             |
| Single Family Partial | 84       | \$2,207.61  | \$1,068.53                              | 106.6%     | \$1,139.08         | \$94.92             |

**PLEASE NOTE:** This chart shows the proposed maximum increase on both an annual and monthly basis. The actual increase in assessment may end up being lower than listed above. Please contact us directly with any questions.

The O&M Assessments (in addition to debt assessments, if any) will appear on the November 2025 Hillsborough County property tax bill. Amount shown includes all applicable collection costs. Property owner is eligible for a discount of up to 4% if paid early.

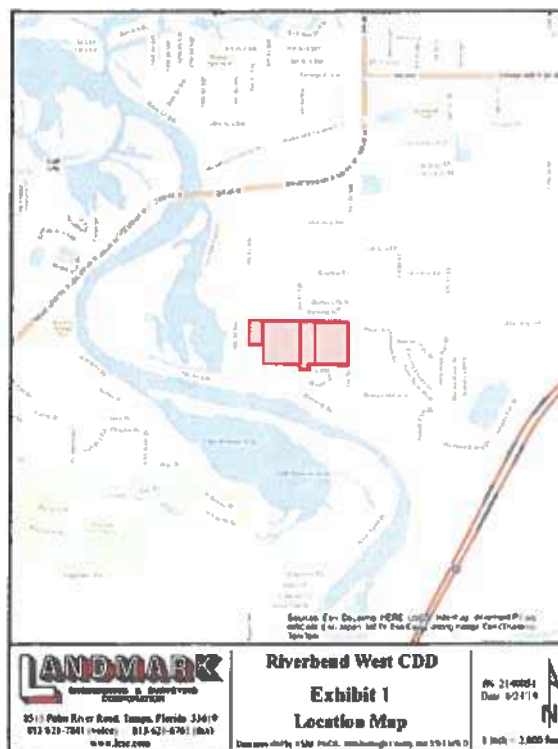
The County Tax Collector will collect the assessments for all lots and parcels within the District. Alternatively, the District may elect to directly collect its assessments in accordance with Chapter 190, Florida Statutes. Failure to pay the District's assessments will cause a tax certificate to be issued against the property which may result in a loss of title or a foreclosure action to be filed against the property. All affected property owners have the right to appear at the public hearing and to file written objections with the District within 20 days of publication of this notice.

The public hearing and meeting are open to the public and will be conducted in accordance with the provisions of Florida law for community development districts. They may be continued to a date, time, and place to be specified on the record at the hearing or meeting. There may be occasions when staff or Board members may participate by speaker telephone.

In accordance with the provisions of the Americans with Disabilities Act, any person requiring special accommodations because of a disability or physical impairment should contact the District Manager's office at least 2 business days prior to the meeting. If you are hearing or speech impaired, please contact the Florida Relay Service at 711 or 1-800-955-8771 (TTY), or 1-800-955-8770 (voice) for aid in contacting the District Manager's office.

Each person who decides to appeal any decision made by the Board with respect to any matter considered at the public hearing or meeting is advised that person will need a record of proceedings and that accordingly, the person may need to ensure that a verbatim record of the proceedings is made, including the testimony and evidence upon which such appeal is to be based.

Kristee Cole, District Manager







# INVOICE

2002 West Grand Parkway North  
Suite 100  
Katy, TX 77449

**INVOICE#**

153025

**DATE**

7/1/2025

**BILL TO**

Riverbend West Community  
Development District  
313 Campus St  
Celebration FL 34747-4982  
United States

**CUSTOMER ID**

C3041

**NET TERMS**

Due On Receipt

**PO#****DUE DATE**

7/1/2025

Services provided for the Month of: July 2025

| DESCRIPTION         | QTY | UOM | RATE     | MARKUP | AMOUNT          |
|---------------------|-----|-----|----------|--------|-----------------|
| Administrative Fees | 1   | Ea  | 4,204.00 |        | 4,204.00        |
| Field Operations    | 1   | Ea  | 600.00   |        | 600.00          |
| Porter Services     | 1   | Ea  | 220.00   |        | 220.00          |
| <b>Subtotal</b>     |     |     |          |        | <b>5,024.00</b> |

**Subtotal**

\$5,024.00

**Tax**

\$0.00

**Total Due**

\$5,024.00

**Remit To : Inframark LLC, PO BOX 733778, Dallas, Texas, 75373-3778**

*To pay by Credit Card, please contact us at 281-578-4299, 9:00am - 5:30pm EST, Monday – Friday. A surcharge fee may apply.*

*To pay via ACH or Wire, please refer to our banking information below:*

*Account Name: INFRAMARK, LLC*

*ACH - Bank Routing Number: 111000614 / Account Number: 912593196*

*Wire - Bank Routing Number: 021000021 / SWIFT Code: CHASUS33 / Account Number: 912593196*

*Please include the Customer ID and the Invoice Number on your form of payment.*

**CHECK REQUEST**  
**FORM Riverbend**  
**West CDD**

**Date:** 7.16.25

**Invoice Number:** 07162025

**Payable To:**  
**Mailing Address:** Beth Bellemore

206 Eagle Summit Dr.

**Check amount:** Ruskin, FL 33570

**Please cut check from Acct.** \$50

**Check description/reason:** watering

**Coding:** misc revenues

**Mailing instructions:**

**Due Date for Check:** ASAP

**Requested By:** Kristee Cole

**Authorized By:** Kristee Cole

|                     |                                     |                              |                    |
|---------------------|-------------------------------------|------------------------------|--------------------|
| <b>DATE :</b>       | <b>07/02/25</b>                     | <b>AUTO PAY</b>              |                    |
| <b>INVOICE :</b>    | <b>070225 ACH</b>                   |                              | <b>ACH 7/23</b>    |
| <b>Account No.</b>  | <b>Service Address</b>              | <b>Descrip/Meter</b>         | <b>5/29-6/26</b>   |
| <b>211006939188</b> | <b>371 CASCADE BEND DR</b>          | <b>1000440749</b>            | <b>\$ 3,144.62</b> |
| <b>211021590925</b> | <b>201 EAGLE SUMMIT DR, ENTRY</b>   | <b>1000914666</b>            | <b>\$ 22.35</b>    |
| <b>211027989568</b> | <b>208 EAGLE SUMMIT DR, MAILBOX</b> | <b>1000890863</b>            | <b>\$ 23.36</b>    |
| <b>221008099402</b> | <b>21ST AVE SE 1ST ST SW</b>        | <b>STREET LIGHTS</b>         | <b>\$ 909.61</b>   |
| <b>211006939329</b> | <b>368 CASCADE BEND DR</b>          | <b>1000829932</b>            | <b>\$ 522.92</b>   |
| <b>Total (4)</b>    |                                     | <b>543063-53100-5000-001</b> | <b>\$ 4,622.86</b> |



Hillsborough  
County Florida

S-Page 1 of 2

| CUSTOMER NAME      | ACCOUNT NUMBER | BILL DATE  | DUE DATE   |
|--------------------|----------------|------------|------------|
| RIVERBEND WEST CDD | 1442461492     | 06/30/2025 | 07/21/2025 |

**Summary of Account Charges**

|                          |                 |
|--------------------------|-----------------|
| Previous Balance         | \$170.20        |
| Net Payments - Thank You | \$-170.20       |
| Total Account Charges    | <b>\$205.43</b> |
| <b>AMOUNT DUE</b>        | <b>\$205.43</b> |

This is your summary of charges. Detailed charges by premise are listed on the following page(s)



Hillsborough  
County Florida

Make checks payable to: **BOCC**

**ACCOUNT NUMBER: 1442461492**



ELECTRONIC PAYMENTS BY CHECK OR

Automated Payment Line: (813) 276 8526

Internet Payments: [HCFLGov.net/WaterBill](https://HCFLGov.net/WaterBill)

Additional Information: [HCFLGov.net/Water](https://HCFLGov.net/Water)



**THANK YOU!**



RIVERBEND WEST CDD  
C/O INFRAMARK  
210 NORTH UNIVERSITY DR SUITE 702  
CORAL SPRINGS FL 33071-7320

1,356 0

**DUE DATE**

**07/21/2025**

**Auto Pay Scheduled  
DO NOT PAY**



0014424614924 00000205435



Hillsborough  
County Florida

| CUSTOMER NAME      | ACCOUNT NUMBER | BILL DATE  | DUE DATE   |
|--------------------|----------------|------------|------------|
| RIVERBEND WEST CDD | 1442461492     | 06/30/2025 | 07/21/2025 |

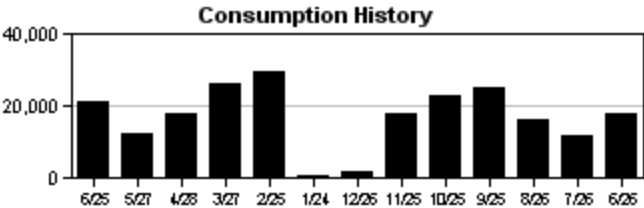
Service Address: 2070 LEAPING WILDCAT PL (COMM IRRIG MTR)

S-Page 2 of 2

| METER NUMBER | PREVIOUS DATE | PREVIOUS READ | PRESENT DATE | PRESENT READ | CONSUMPTION | READ TYPE | METER DESCRIPTION |
|--------------|---------------|---------------|--------------|--------------|-------------|-----------|-------------------|
| 61142667     | 05/27/2025    | 24765         | 06/25/2025   | 24976        | 21100 GAL   | ACTUAL    | WATER             |

Service Address Charges

|                               |          |
|-------------------------------|----------|
| Customer Service Charge       | \$6.03   |
| Purchase Water Pass-Thru      | \$63.72  |
| Water Base Charge             | \$95.40  |
| Water Usage Charge            | \$21.73  |
| Total Service Address Charges | \$186.88 |



Hillsborough  
County Florida

| CUSTOMER NAME      | ACCOUNT NUMBER | BILL DATE  | DUE DATE   |
|--------------------|----------------|------------|------------|
| RIVERBEND WEST CDD | 1442461492     | 06/30/2025 | 07/21/2025 |

Service Address: 222 CASCADE BEND DR

S-Page 2 of 2

| METER NUMBER | PREVIOUS DATE | PREVIOUS READ | PRESENT DATE | PRESENT READ | CONSUMPTION | READ TYPE | METER DESCRIPTION |
|--------------|---------------|---------------|--------------|--------------|-------------|-----------|-------------------|
| 703320784    | 05/29/2025    | 26            | 06/29/2025   | 26           | 0 GAL       | ACTUAL    | WATER             |

Service Address Charges

|                               |         |
|-------------------------------|---------|
| Customer Service Charge       | \$6.03  |
| Water Base Charge             | \$12.52 |
| Total Service Address Charges | \$18.55 |





RIVERBEND WEST COMMUNITY  
DEVELOPMENT DISTRICT  
371 CASCADE BEND DR  
RUSKIN, FL 33570-6309

Statement Date: July 02, 2025

Amount Due: \$3,144.62

Due Date: July 23, 2025

Account #: 211006939188

DO NOT PAY. Your account will be drafted on July 23, 2025

### Account Summary

|  |                   |
|--|-------------------|
| Previous Amount Due                      | \$3,093.39        |
| Payment(s) Received Since Last Statement | -\$3,093.39       |
| <b>Current Month's Charges</b>           | <b>\$3,144.62</b> |

**Amount Due by July 23, 2025 \$3,144.62**

Amount not paid by due date may be assessed a late payment charge and an additional deposit.

### Your Energy Insight



Your average daily kWh used was **14.81% higher** than the same period last year.

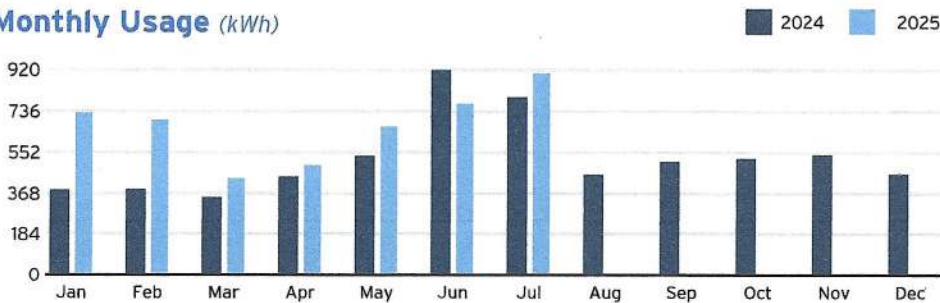


Your average daily kWh used was **19.23% higher** than it was in your previous period.



Scan here to view  
your account online.

### Monthly Usage (kWh)



Learn about your newly redesigned bill and get deeper insights about your usage by visiting [TECOaccount.com](https://TECOaccount.com)

**STOP POWER SURGES!**  
**50% OFF install**  
**plus 1st month free!**

Limited time offer at  
[TampaElectric.com/SurgeProtection](https://TampaElectric.com/SurgeProtection)

Zap Cap | **TECO**  
SYSTEMS | TAMPA ELECTRIC  
AN EMERA COMPANY



To ensure prompt credit, please return stub portion of this bill with your payment.

Account #: 211006939188

Due Date: July 23, 2025



**Pay your bill online at [TampaElectric.com](https://TampaElectric.com)**

See reverse side of your paystub for more ways to pay.

Go Paperless, Go Green! Visit [TampaElectric.com/Paperless](https://TampaElectric.com/Paperless) to enroll now.

Amount Due: \$3,144.62

Payment Amount: \$ \_\_\_\_\_

629162231814

Your account will be  
drafted on July 23, 2025

RIVERBEND WEST COMMUNITY DEVELOPMENT DISTRICT  
210 N UNIVERSITY DR, STE 702  
CORAL SPRINGS, FL 33071-7320

Mail payment to:  
TECO  
P.O. BOX 31318  
TAMPA, FL 33631-3318

Make check payable to: TECO  
Please write your account number on the memo line of your check.





**Service For:**  
371 CASCADE BEND DR  
RUSKIN, FL 33570-6309

Account #: 211006939188  
Statement Date: July 02, 2025  
Charges Due: July 23, 2025

## Meter Read

**Service Period:** May 29, 2025 - Jun 26, 2025

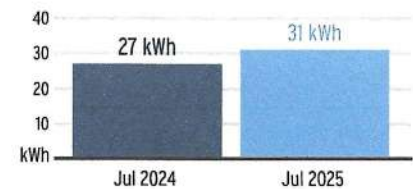
**Rate Schedule:** General Service - Non Demand

| Meter Number | Read Date  | Current Reading | - Previous Reading | = Total Used | Multiplier | Billing Period |
|--------------|------------|-----------------|--------------------|--------------|------------|----------------|
| 1000440749   | 06/26/2025 | 40,004          | 39,099             | 905 kWh      | 1          | 29 Days        |

## Charge Details

|  |  |                         |                 |
|--|--|-------------------------|-----------------|
|  | <b>Electric Charges</b>                          |                         |                 |
|  | Daily Basic Service Charge                       | 29 days @ \$0.63000     | \$18.27         |
|  | Energy Charge                                    | 905 kWh @ \$0.08641/kWh | \$78.20         |
|  | Fuel Charge                                      | 905 kWh @ \$0.03391/kWh | \$30.69         |
|  | Storm Protection Charge                          | 905 kWh @ \$0.00577/kWh | \$5.22          |
|  | Clean Energy Transition Mechanism                | 905 kWh @ \$0.00418/kWh | \$3.78          |
|  | Storm Surcharge                                  | 905 kWh @ \$0.02121/kWh | \$19.20         |
|  | Florida Gross Receipt Tax                        |                         | \$3.98          |
|  | <b>Electric Service Cost</b>                     |                         | <b>\$159.34</b> |
|  | State Tax  |                         | \$13.46         |
|  | <b>Total Electric Cost, Local Fees and Taxes</b> |                         | <b>\$172.80</b> |

## Avg kWh Used Per Day



Billing information continues on next page →

For more information about your bill and understanding your charges, please visit [TampaElectric.com](https://www.tampaelectric.com)

## Ways To Pay Your Bill



### Bank Draft

Visit [TECOaccount.com](https://TECOaccount.com) for free recurring or one time payments via checking or savings account.



### In-Person

Find list of Payment Agents at [TampaElectric.com](https://TampaElectric.com)



### Mail A Check

**Payments:**  
TECO  
P.O. Box 31318  
Tampa, FL 33631-3318  
Mail your payment in the enclosed envelope.



### Credit or Debit Card

Pay by credit Card using KUBRA EZ-Pay at [TECOaccount.com](https://TECOaccount.com). Convenience fee will be charged.



### Phone

Toll Free:  
**866-689-6469**

**All Other Correspondences:**  
Tampa Electric  
P.O. Box 111  
Tampa, FL 33601-0111

## Contact Us

### Online:

[TampaElectric.com](https://TampaElectric.com)

### Phone:

**Commercial Customer Care:**

866-832-6249

**Residential Customer Care:**

813-223-0800 (Hillsborough)

863-299-0800 (Polk County)

888-223-0800 (All Other Counties)

### Hearing Impaired/TTY:

7-1-1

### Power Outage:

877-588-1010

### Energy-Saving Programs:

813-275-3909

**Please Note:** If you choose to pay your bill at a location not listed on our website or provided by Tampa Electric, you are paying someone who is not authorized to act as a payment agent at Tampa Electric. You bear the risk that this unauthorized party will relay the payment to Tampa Electric and do so in a timely fashion. Tampa Electric is not responsible for payments made to unauthorized agents, including their failure to deliver or timely deliver the payment to us. Such failures may result in late payment charges to your account or service disconnection.



**Service For:**  
371 CASCADE BEND DR  
RUSKIN, FL 33570-6309

Account #: 211006939188  
Statement Date: July 02, 2025  
Charges Due: July 23, 2025

**Service Period:** May 29, 2025 - Jun 26, 2025

**Rate Schedule:** Lighting Service

## Charge Details



### Electric Charges

#### Lighting Service Items LS-1 (Bright Choices) for 29 days

|                                   |                         |           |
|-----------------------------------|-------------------------|-----------|
| Lighting Energy Charge            | 985 kWh @ \$0.03412/kWh | \$33.61   |
| Fixture & Maintenance Charge      | 49 Fixtures             | \$614.83  |
| Lighting Pole / Wire              | 49 Poles                | \$2061.92 |
| Lighting Fuel Charge              | 985 kWh @ \$0.03363/kWh | \$33.13   |
| Storm Protection Charge           | 985 kWh @ \$0.00559/kWh | \$5.51    |
| Clean Energy Transition Mechanism | 985 kWh @ \$0.00043/kWh | \$0.42    |
| Storm Surcharge                   | 985 kWh @ \$0.01230/kWh | \$12.12   |
| Florida Gross Receipt Tax         |                         | \$2.17    |
| State Tax                         |                         | \$208.11  |

**Lighting Charges** **\$2,971.82**

**Total Current Month's Charges**

**\$3,144.62**



**Service For:**  
371 CASCADE BEND DR  
RUSKIN, FL 33570-6309

Account #: 211006939188  
Statement Date: July 02, 2025  
Charges Due: July 23, 2025

### Important Messages





RIVERBEND WEST COMMUNITY  
DEVELOPMENT DISTRICT  
208 EAGLE SUMMIT DR, ENTRY  
RUSKIN, FL 33570-3303

Statement Date: July 02, 2025

Amount Due: \$22.35

Due Date: July 23, 2025  
Account #: 211021590925

DO NOT PAY. Your account will be drafted on July 23, 2025

## Account Summary

Current Service Period: May 29, 2025 - June 26, 2025

|  |          |
|--|----------|
| Previous Amount Due                      | \$23.99  |
| Payment(s) Received Since Last Statement | -\$23.99 |
| Current Month's Charges                  | \$22.35  |

Amount Due by July 23, 2025 \$22.35

Amount not paid by due date may be assessed a late payment charge and an additional deposit.

## Your Energy Insight

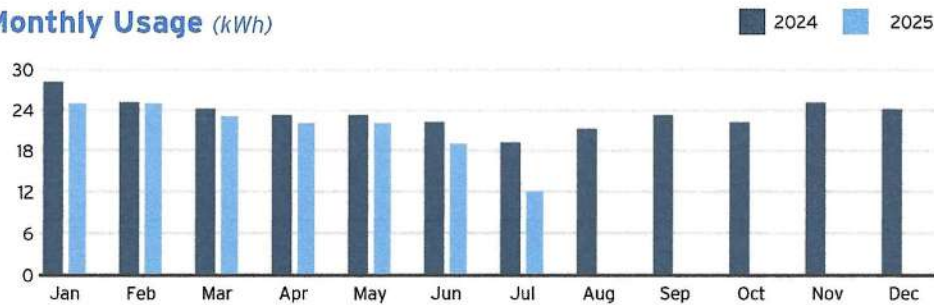
Your average daily kWh used was **42.86% lower** than the same period last year.

Your average daily kWh used was **33.33% lower** than it was in your previous period.



Scan here to view  
your account online.

## Monthly Usage (kWh)



Learn about your newly redesigned bill and get deeper insights about your usage by visiting [TECOaccount.com](https://TECOaccount.com)

**STOP POWER SURGES!**  
50% OFF install  
plus 1st month free!

Limited time offer at  
[TampaElectric.com/SurgeProtection](https://TampaElectric.com/SurgeProtection)

Zap Cap | **TECO**  
SYSTEMS | TAMPA ELECTRIC  
AN EMERA COMPANY



To ensure prompt credit, please return stub portion of this bill with your payment.

Account #: 211021590925  
Due Date: July 23, 2025



Pay your bill online at [TampaElectric.com](https://TampaElectric.com)

See reverse side of your paystub for more ways to pay.

Go Paperless, Go Green! Visit [TampaElectric.com/Paperless](https://TampaElectric.com/Paperless) to enroll now.

Amount Due: \$22.35

Payment Amount: \$ \_\_\_\_\_

661260827683

Your account will be  
drafted on July 23, 2025

RIVERBEND WEST COMMUNITY DEVELOPMENT DISTRICT  
210 N UNIVERSITY DR, STE 702  
CORAL SPRINGS, FL 33071-7320

Mail payment to:  
TECO  
P.O. BOX 31318  
TAMPA, FL 33631-3318

Make check payable to: TECO  
Please write your account number on the memo line of your check.



**Service For:**  
208 EAGLE SUMMIT DR  
ENTRY, RUSKIN, FL 33570-3303

Account #: 211021590925  
Statement Date: July 02, 2025  
Charges Due: July 23, 2025

## Meter Read

**Service Period:** May 29, 2025 - Jun 26, 2025

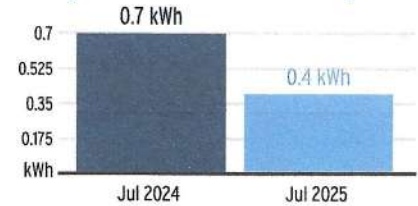
**Rate Schedule:** General Service - Non Demand

| Meter Number | Read Date  | Current Reading | - | Previous Reading | = | Total Used | Multiplier | Billing Period |
|--------------|------------|-----------------|---|------------------|---|------------|------------|----------------|
| 1000914666   | 06/26/2025 | 267             |   | 255              |   | 12 kWh     | 1          | 29 Days        |

## Charge Details

|  |  |                        |                |
|--|--|------------------------|----------------|
|  | <b>Electric Charges</b>                          |                        |                |
|  | Daily Basic Service Charge                       | 29 days @ \$0.63000    | \$18.27        |
|  | Energy Charge                                    | 12 kWh @ \$0.08641/kWh | \$1.04         |
|  | Fuel Charge                                      | 12 kWh @ \$0.03391/kWh | \$0.41         |
|  | Storm Protection Charge                          | 12 kWh @ \$0.00577/kWh | \$0.07         |
|  | Clean Energy Transition Mechanism                | 12 kWh @ \$0.00418/kWh | \$0.05         |
|  | Storm Surcharge                                  | 12 kWh @ \$0.02121/kWh | \$0.25         |
|  | Florida Gross Receipt Tax                        |                        | \$0.52         |
|  | <b>Electric Service Cost</b>                     |                        | <b>\$20.61</b> |
|  | State Tax  |                        | \$1.74         |
|  | <b>Total Electric Cost, Local Fees and Taxes</b> |                        | <b>\$22.35</b> |

## Avg kWh Used Per Day



## Important Messages

**Total Current Month's Charges**

**\$22.35**

For more information about your bill and understanding your charges, please visit [TampaElectric.com](https://www.tampaelectric.com)

## Ways To Pay Your Bill



### Bank Draft

Visit [TECOaccount.com](https://TECOaccount.com) for free recurring or one time payments via checking or savings account.



### In-Person

Find list of Payment Agents at [TampaElectric.com](https://TampaElectric.com)



### Mail A Check

**Payments:**  
TECO  
P.O. Box 31318  
Tampa, FL 33631-3318  
Mail your payment in the enclosed envelope.



### Credit or Debit Card

Pay by credit Card using KUBRA EZ-Pay at [TECOaccount.com](https://TECOaccount.com). Convenience fee will be charged.



### Phone

Toll Free:  
**866-689-6469**

**All Other Correspondences:**  
Tampa Electric  
P.O. Box 111  
Tampa, FL 33601-0111

## Contact Us

### Online:

[TampaElectric.com](https://TampaElectric.com)

### Phone:

**Commercial Customer Care:**

866-832-6249

**Residential Customer Care:**

813-223-0800 (Hillsborough)

863-299-0800 (Polk County)

888-223-0800 (All Other Counties)

### Hearing Impaired/TTY:

7-1-1

### Power Outage:

877-588-1010

### Energy-Saving Programs:

813-275-3909

**Please Note:** If you choose to pay your bill at a location not listed on our website or provided by Tampa Electric, you are paying someone who is not authorized to act as a payment agent at Tampa Electric. You bear the risk that this unauthorized party will relay the payment to Tampa Electric and do so in a timely fashion. Tampa Electric is not responsible for payments made to unauthorized agents, including their failure to deliver or timely deliver the payment to us. Such failures may result in late payment charges to your account or service disconnection.





RIVERBEND WEST COMMUNITY  
DEVELOPMENT DISTRICT  
RIVERBEND WEST COMMUNITY DEVELOPMEN  
208 EAGLE SUMMIT DR, MAILBOX  
RUSKIN, FL 33570-3303

Statement Date: July 02, 2025

Amount Due: \$23.36

Due Date: July 23, 2025

Account #: 211027989568

DO NOT PAY. Your account will be drafted on July 23, 2025

## Account Summary

Current Service Period: May 29, 2025 - June 26, 2025

|  |          |
|--|----------|
| Previous Amount Due                      | \$24.17  |
| Payment(s) Received Since Last Statement | -\$24.17 |
| Current Month's Charges                  | \$23.36  |

Amount Due by July 23, 2025 \$23.36

Amount not paid by due date may be assessed a late payment charge and an additional deposit.

## Your Energy Insight

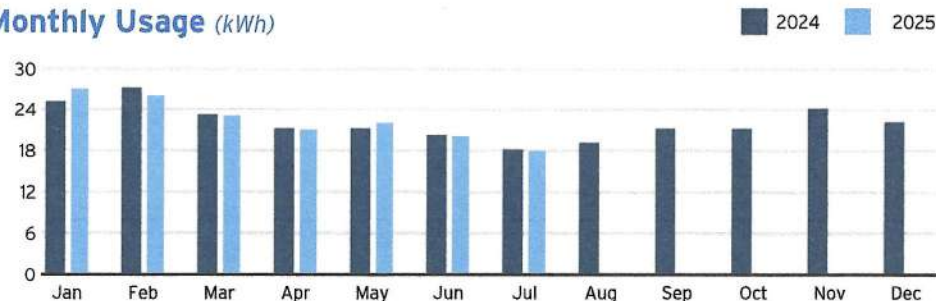
Your average daily kWh used was **0% higher** than the same period last year.

Your average daily kWh used was **14.29% lower** than it was in your previous period.



Scan here to view your account online.

## Monthly Usage (kWh)



Learn about your newly redesigned bill and get deeper insights about your usage by visiting [TECOaccount.com](https://TECOaccount.com)

**STOP POWER SURGES!**  
50% OFF install  
plus 1<sup>st</sup> month free!

Limited time offer at  
[TampaElectric.com/SurgeProtection](https://TampaElectric.com/SurgeProtection)

Zap Cap | **TECO**  
SYSTEMS™ TAMPA ELECTRIC  
AN EMERA COMPANY



To ensure prompt credit, please return stub portion of this bill with your payment.

Account #: 211027989568

Due Date: July 23, 2025



Pay your bill online at [TampaElectric.com](https://TampaElectric.com)

See reverse side of your paystub for more ways to pay.

Go Paperless, Go Green! Visit [TampaElectric.com/Paperless](https://TampaElectric.com/Paperless) to enroll now.

Amount Due: \$23.36

Payment Amount: \$ \_\_\_\_\_

695827526194

Your account will be  
drafted on July 23, 2025

RIVERBEND WEST COMMUNITY DEVELOPMENT DISTRICT  
RIVERBEND WEST COMMUNITY DEVELOPMEN  
210 N UNIVERSITY DR, STE 702  
CORAL SPRINGS, FL 33071-7320

Mail payment to:  
TECO  
P.O. BOX 31318  
TAMPA, FL 33631-3318

Make check payable to: TECO  
Please write your account number on the memo line of your check.





**Service For:**  
208 EAGLE SUMMIT DR  
MAILBOX, RUSKIN, FL 33570-3303

Account #: 211027989568  
Statement Date: July 02, 2025  
Charges Due: July 23, 2025

## Meter Read

**Meter Location:** MAILBOXES & DOG PARK

**Service Period:** May 29, 2025 - Jun 26, 2025

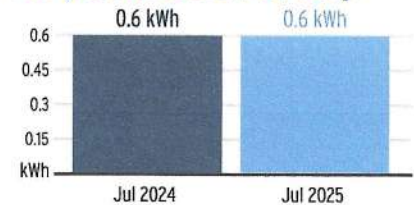
**Rate Schedule:** General Service - Non Demand

| Meter Number | Read Date  | Current Reading | - Previous Reading | = Total Used | Multiplier | Billing Period |
|--------------|------------|-----------------|--------------------|--------------|------------|----------------|
| 1000890863   | 06/26/2025 | 622             | 604                | 18 kWh       | 1          | 29 Days        |

## Charge Details

|  |  |                        |                |
|--|--|------------------------|----------------|
|  | <b>Electric Charges</b>                          |                        |                |
|  | Daily Basic Service Charge                       | 29 days @ \$0.63000    | \$18.27        |
|  | Energy Charge                                    | 18 kWh @ \$0.08641/kWh | \$1.56         |
|  | Fuel Charge                                      | 18 kWh @ \$0.03391/kWh | \$0.61         |
|  | Storm Protection Charge                          | 18 kWh @ \$0.00577/kWh | \$0.10         |
|  | Clean Energy Transition Mechanism                | 18 kWh @ \$0.00418/kWh | \$0.08         |
|  | Storm Surcharge                                  | 18 kWh @ \$0.02121/kWh | \$0.38         |
|  | Florida Gross Receipt Tax                        |                        | \$0.54         |
|  | <b>Electric Service Cost</b>                     |                        | <b>\$21.54</b> |
|  | State Tax  |                        | \$1.82         |
|  | <b>Total Electric Cost, Local Fees and Taxes</b> |                        | <b>\$23.36</b> |

## Avg kWh Used Per Day



## Important Messages

**Total Current Month's Charges**

**\$23.36**

For more information about your bill and understanding your charges, please visit [TampaElectric.com](https://www.tampaelectric.com)

## Ways To Pay Your Bill



### Bank Draft

Visit [TECOaccount.com](https://TECOaccount.com) for free recurring or one time payments via checking or savings account.



### In-Person

Find list of Payment Agents at [TampaElectric.com](https://TampaElectric.com)



### Mail A Check

**Payments:**  
TECO  
P.O. Box 31318  
Tampa, FL 33631-3318  
Mail your payment in the enclosed envelope.



### Credit or Debit Card

Pay by credit Card using KUBRA EZ-Pay at [TECOaccount.com](https://TECOaccount.com). Convenience fee will be charged.



### Phone

Toll Free:  
**866-689-6469**

**All Other Correspondences:**  
Tampa Electric  
P.O. Box 111  
Tampa, FL 33601-0111

## Contact Us

### Online:

[TampaElectric.com](https://TampaElectric.com)

### Phone:

**Commercial Customer Care:**

866-832-6249

**Residential Customer Care:**

813-223-0800 (Hillsborough)

863-299-0800 (Polk County)

888-223-0800 (All Other Counties)

### Hearing Impaired/TTY:

7-1-1

### Power Outage:

877-588-1010

### Energy-Saving Programs:

813-275-3909

**Please Note:** If you choose to pay your bill at a location not listed on our website or provided by Tampa Electric, you are paying someone who is not authorized to act as a payment agent at Tampa Electric. You bear the risk that this unauthorized party will relay the payment to Tampa Electric and do so in a timely fashion. Tampa Electric is not responsible for payments made to unauthorized agents, including their failure to deliver or timely deliver the payment to us. Such failures may result in late payment charges to your account or service disconnection.



RIVERBEND WEST COMMUNITY  
DEVELOPMENT DISTRICT  
21ST AV SE 1ST ST SW  
RUSKIN, FL 33570-0000

Statement Date: July 02, 2025

Amount Due: \$909.61

Due Date: July 23, 2025  
Account #: 221008099402

DO NOT PAY. Your account will be drafted on July 23, 2025

### Account Summary

Current Service Period: May 29, 2025 - June 26, 2025

|  |           |
|--|-----------|
| Previous Amount Due                      | \$901.15  |
| Payment(s) Received Since Last Statement | -\$901.15 |
| Current Month's Charges                  | \$909.61  |

Amount Due by July 23, 2025 \$909.61

Amount not paid by due date may be assessed a late payment charge and an additional deposit.



Scan here to view  
your account online.



Learn about your newly redesigned bill and get deeper insights about your usage by visiting [TECOaccount.com](https://TECOaccount.com)



To ensure prompt credit, please return stub portion of this bill with your payment.

Account #: 221008099402

Due Date: July 23, 2025



Pay your bill online at [TampaElectric.com](https://TampaElectric.com)

See reverse side of your paystub for more ways to pay.

Go Paperless, Go Green! Visit [TampaElectric.com/Paperless](https://TampaElectric.com/Paperless) to enroll now.

Amount Due: \$909.61

Payment Amount: \$ \_\_\_\_\_

676075585016

Your account will be  
drafted on July 23, 2025

RIVERBEND WEST COMMUNITY DEVELOPMENT DISTRICT  
210 N UNIVERSITY DR, STE 702  
CORAL SPRINGS, FL 33071-7320

Mail payment to:  
TECO  
P.O. BOX 31318  
TAMPA, FL 33631-3318

Make check payable to: TECO  
Please write your account number on the memo line of your check.





**Service For:**  
21ST AV SE 1ST ST SW  
RUSKIN, FL 33570-0000

Account #: 221008099402  
Statement Date: July 02, 2025  
Charges Due: July 23, 2025

**Service Period:** May 29, 2025 - Jun 26, 2025

**Rate Schedule:** Lighting Service

## Charge Details

## Important Messages



### Electric Charges

#### Lighting Service Items LS-1 (Bright Choices) for 29 days

|                                   |                         |                 |
|-----------------------------------|-------------------------|-----------------|
| Lighting Energy Charge            | 256 kWh @ \$0.03412/kWh | \$8.73          |
| Fixture & Maintenance Charge      | 16 Fixtures             | \$150.08        |
| Lighting Pole / Wire              | 16 Poles                | \$673.28        |
| Lighting Fuel Charge              | 256 kWh @ \$0.03363/kWh | \$8.61          |
| Storm Protection Charge           | 256 kWh @ \$0.00559/kWh | \$1.43          |
| Clean Energy Transition Mechanism | 256 kWh @ \$0.00043/kWh | \$0.11          |
| Storm Surcharge                   | 256 kWh @ \$0.01230/kWh | \$3.15          |
| Florida Gross Receipt Tax         |                         | \$0.56          |
| State Tax                         |                         | \$63.66         |
| <b>Lighting Charges</b>           |                         | <b>\$909.61</b> |

**Total Current Month's Charges**

**\$909.61**

For more information about your bill and understanding your charges, please visit [TampaElectric.com](http://TampaElectric.com)

## Ways To Pay Your Bill



### Bank Draft

Visit [TECOaccount.com](http://TECOaccount.com) for free recurring or one time payments via checking or savings account.



### In-Person

Find list of Payment Agents at [TampaElectric.com](http://TampaElectric.com)



### Mail A Check

**Payments:**  
TECO  
P.O. Box 31318  
Tampa, FL 33631-3318  
Mail your payment in the enclosed envelope.



### Credit or Debit Card

Pay by credit Card using KUBRA EZ-Pay at [TECOaccount.com](http://TECOaccount.com). Convenience fee will be charged.



### Phone

Toll Free:  
**866-689-6469**

**All Other Correspondences:**  
Tampa Electric  
P.O. Box 111  
Tampa, FL 33601-0111

## Contact Us

### Online:

[TampaElectric.com](http://TampaElectric.com)

### Phone:

**Commercial Customer Care:**

866-832-6249

**Residential Customer Care:**

813-223-0800 (Hillsborough)

863-299-0800 (Polk County)

888-223-0800 (All Other Counties)

### Hearing Impaired/TTY:

7-1-1

### Power Outage:

877-588-1010

### Energy-Saving Programs:

813-275-3909

**Please Note:** If you choose to pay your bill at a location not listed on our website or provided by Tampa Electric, you are paying someone who is not authorized to act as a payment agent at Tampa Electric. You bear the risk that this unauthorized party will relay the payment to Tampa Electric and do so in a timely fashion. Tampa Electric is not responsible for payments made to unauthorized agents, including their failure to deliver or timely deliver the payment to us. Such failures may result in late payment charges to your account or service disconnection.



RIVERBEND WEST COMMUNITY  
DEVELOPMENT DISTRICT  
368 CASCADE BEND DR  
RUSKIN, FL 33570-6394

Statement Date: July 02, 2025

Amount Due: \$522.92

Due Date: July 23, 2025

Account #: 211006939329

DO NOT PAY. Your account will be drafted on July 23, 2025

### Account Summary

Current Service Period: May 29, 2025 - June 26, 2025

|  |           |
|--|-----------|
| Previous Amount Due                      | \$513.97  |
| Payment(s) Received Since Last Statement | -\$513.97 |

|                         |          |
|-------------------------|----------|
| Current Month's Charges | \$522.92 |
|-------------------------|----------|

|                             |          |
|-----------------------------|----------|
| Amount Due by July 23, 2025 | \$522.92 |
|-----------------------------|----------|

Amount not paid by due date may be assessed a late payment charge and an additional deposit.

### Your Energy Insight



Your average daily kWh used was **28.75% higher** than the same period last year.

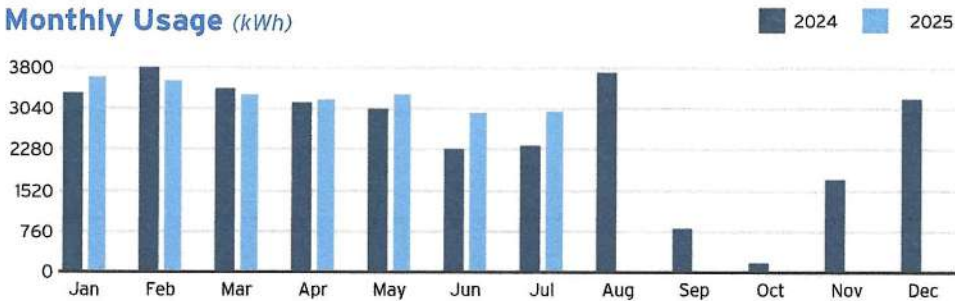


Your average daily kWh used was **5.1% higher** than it was in your previous period.



Scan here to view your account online.

### Monthly Usage (kWh)



Learn about your newly redesigned bill and get deeper insights about your usage by visiting [TECOaccount.com](https://TECOaccount.com)

**STOP POWER SURGES!**  
50% OFF install  
plus 1<sup>st</sup> month free!

Limited time offer at  
[TampaElectric.com/SurgeProtection](https://TampaElectric.com/SurgeProtection)

Zap Cap | **TECO**  
SYSTEMS | AN EMERA COMPANY



To ensure prompt credit, please return stub portion of this bill with your payment.

Account #: 211006939329

Due Date: July 23, 2025



Pay your bill online at [TampaElectric.com](https://TampaElectric.com)

See reverse side of your paystub for more ways to pay.

Go Paperless, Go Green! Visit [TampaElectric.com/Paperless](https://TampaElectric.com/Paperless) to enroll now.

Amount Due: \$522.92

Payment Amount: \$ \_\_\_\_\_

629162231815

Your account will be  
drafted on July 23, 2025

RIVERBEND WEST COMMUNITY DEVELOPMENT DISTRICT  
210 N UNIVERSITY DR, STE 702  
CORAL SPRINGS, FL 33071-7320

Mail payment to:  
TECO  
P.O. BOX 31318  
TAMPA, FL 33631-3318

Make check payable to: TECO  
Please write your account number on the memo line of your check.





**Service For:**  
368 CASCADE BEND DR  
RUSKIN, FL 33570-6394

Account #: 211006939329  
Statement Date: July 02, 2025  
Charges Due: July 23, 2025

## Meter Read

**Service Period:** May 29, 2025 - Jun 26, 2025

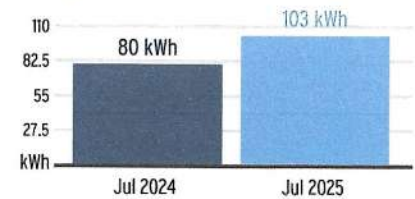
**Rate Schedule:** General Service - Non Demand

| Meter Number | Read Date  | Current Reading | - Previous Reading | = Total Used | Multiplier | Billing Period |
|--------------|------------|-----------------|--------------------|--------------|------------|----------------|
| 1000829932   | 06/26/2025 | 44,236          | 41,253             | 2,983 kWh    | 1          | 29 Days        |

## Charge Details

|  |  |                           |                 |
|--|--|---------------------------|-----------------|
|  | <b>Electric Charges</b>                          |                           |                 |
|  | Daily Basic Service Charge                       | 29 days @ \$0.63000       | \$18.27         |
|  | Energy Charge                                    | 2,983 kWh @ \$0.08641/kWh | \$257.76        |
|  | Fuel Charge                                      | 2,983 kWh @ \$0.03391/kWh | \$101.15        |
|  | Storm Protection Charge                          | 2,983 kWh @ \$0.00577/kWh | \$17.21         |
|  | Clean Energy Transition Mechanism                | 2,983 kWh @ \$0.00418/kWh | \$12.47         |
|  | Storm Surcharge                                  | 2,983 kWh @ \$0.02121/kWh | \$63.27         |
|  | Florida Gross Receipt Tax                        |                           | \$12.05         |
|  | <b>Electric Service Cost</b>                     |                           | <b>\$482.18</b> |
|  | State Tax  |                           | \$40.74         |
|  | <b>Total Electric Cost, Local Fees and Taxes</b> |                           | <b>\$522.92</b> |

## Avg kWh Used Per Day



## Important Messages

**Total Current Month's Charges**

**\$522.92**

For more information about your bill and understanding your charges, please visit [TampaElectric.com](https://www.tampaelectric.com)

## Ways To Pay Your Bill



### Bank Draft

Visit [TECOaccount.com](https://www.tampaelectric.com) for free recurring or one time payments via checking or savings account.



### In-Person

Find list of Payment Agents at [TampaElectric.com](https://www.tampaelectric.com)



### Mail A Check

**Payments:**  
TECO  
P.O. Box 31318  
Tampa, FL 33631-3318  
Mail your payment in the enclosed envelope.



### Credit or Debit Card

Pay by credit Card using KUBRA EZ-Pay at [TECOaccount.com](https://www.tampaelectric.com). Convenience fee will be charged.



### Phone

Toll Free:  
**866-689-6469**

**All Other Correspondences:**  
Tampa Electric  
P.O. Box 111  
Tampa, FL 33601-0111

## Contact Us

### Online:

[TampaElectric.com](https://www.tampaelectric.com)

### Phone:

**Commercial Customer Care:**

866-832-6249

**Residential Customer Care:**

813-223-0800 (Hillsborough)

863-299-0800 (Polk County)

888-223-0800 (All Other Counties)

**Hearing Impaired/TTY:**

7-1-1

**Power Outage:**

877-588-1010

**Energy-Saving Programs:**

813-275-3909

**Please Note:** If you choose to pay your bill at a location not listed on our website or provided by Tampa Electric, you are paying someone who is not authorized to act as a payment agent at Tampa Electric. You bear the risk that this unauthorized party will relay the payment to Tampa Electric and do so in a timely fashion. Tampa Electric is not responsible for payments made to unauthorized agents, including their failure to deliver or timely deliver the payment to us. Such failures may result in late payment charges to your account or service disconnection.

# RIVERBEND WEST CDD

## DISTRICT CHECK REQUEST

**Today's Date** 6/18/2025

**Payable To** Riverbend West CDD

**Check Amount** **\$1,926.02**

**Check Description** Series 2016 - FY 25 Tax Dist. ID 728

**Check Amount** **\$648.18**

**Check Description** Series 2019 - FY 25 Tax Dist. ID 728

**Special Instructions** Do not mail. Please give to Eric

(Please attach all supporting documentation: invoices, receipts, etc.)

*ERIC*

\_\_\_\_\_  
Authorization

|             |                  |
|-------------|------------------|
| DM          |                  |
| Fund        | <u>001</u>       |
| G/L         | <u>20702</u>     |
| Object Code |                  |
| Chk #       | _____ Date _____ |



# RIVERBEND WEST CDD

## TAX REVENUE RECEIPTS AND TRANSFER SCHEDULE

Fiscal Year 2025, Tax Year 2024

|           | Dollar Amounts | Fiscal Year 2025 Percentages |          |
|-----------|----------------|------------------------------|----------|
| Net O&M   | \$ 340,497.77  | 45.63%                       | 0.456270 |
| Net DS 16 | \$ 303,598.63  | 40.68%                       | 0.406820 |
| Net DS 19 | \$ 102,174.24  | 13.69%                       | 0.136910 |
| Net Total | 746,270.64     | 100.00%                      | 100.00%  |

| Date Received                         | Amount Received   | 45.63%                               | 45.63%                           | 40.68%                                     | 13.69%                                     | Proof  | Date Transferred / Distribution ID | Notes / CDD check # |
|---------------------------------------|-------------------|--------------------------------------|----------------------------------|--|--|--------|------------------------------------|---------------------|
|                                       |                   | Raw Numbers<br>Operations<br>Revenue | Rounded<br>Operations<br>Revenue | Rounded<br>2016 Debt<br>Service<br>Revenue | Rounded<br>2019 Debt<br>Service<br>Revenue |        |                                    |                     |
| 11/6/2024                             | 2,159.28          | 985.21                               | 985.21                           | 878.44                                     | 295.63                                     | -      | 695                                | 100028              |
| 11/15/2024                            | 2,206.29          | 1,006.66                             | 1,006.66                         | 897.56                                     | 302.06                                     | (0.01) | 697                                | 100028              |
| 11/22/2024                            | 2,206.29          | 1,006.66                             | 1,006.66                         | 897.56                                     | 302.06                                     | (0.01) | 698                                | 100028              |
| 12/6/2024                             | 589,981.18        | 269,190.71                           | 269,190.71                       | 240,016.14                                 | 80,774.32                                  | (0.01) | 706                                | 100028              |
| 12/3/2024                             | 4,412.59          | 2,013.33                             | 2,013.33                         | 1,795.13                                   | 604.13                                     | -      | 700                                | 100028/             |
| 12/16/2024                            | 33,127.11         | 15,114.91                            | 15,114.91                        | 13,476.77                                  | 4,535.43                                   | -      | 707                                | 100028/             |
| 1/7/2025                              | 87,415.84         | 39,885.23                            | 39,885.23                        | 35,562.51                                  | 11,968.10                                  | 0.00   | 709                                | 1165                |
| 2/7/2025                              | 9,368.18          | 4,274.42                             | 4,274.42                         | 3,811.16                                   | 1,282.60                                   | -      | 713                                | 1170                |
| 3/10/2025                             | 3,496.00          | 1,595.12                             | 1,595.12                         | 1,422.24                                   | 478.64                                     | (0.00) | 716                                | 1175                |
| 4/7/2025                              | 3,622.23          | 1,652.71                             | 1,652.71                         | 1,473.60                                   | 495.92                                     | -      | 719                                | 1177                |
| 5/7/2025                              | 2,972.69          | 1,356.35                             | 1,356.35                         | 1,209.35                                   | 406.99                                     | (0.00) | 723                                | 1180                |
| 6/9/2025                              | 2,367.16          | 1,080.06                             | 1,080.06                         | 963.01                                     | 324.09                                     | -      | 726                                | 1183                |
| 6/18/2025                             | 4,734.33          | 2,160.13                             | 2,160.13                         | 1,926.02                                   | 648.18                                     | -      | 728                                |                     |
|                                       |                   | -                                    | -                                | -  | -  | -      |                                    |                     |
|                                       |                   | -                                    | -                                | -  | -  | -      |                                    |                     |
|                                       |                   | -                                    | -                                | -  | -  | -      |                                    |                     |
| <b>TOTAL</b>                          | <b>748,069.17</b> | 341,321.52                           | 341,321.52                       | 304,329.50                                 | 102,418.15                                 | 0.00   |                                    |                     |
| <b>Net Total on Roll</b>              | 746,270.64        |                                      | 340,497.77                       | 303,598.63                                 | 102,174.24                                 |        |                                    |                     |
| <b>Collection Surplus / (Deficit)</b> | 1,798.53          |                                      | 823.75                           | 730.87                                     | 243.91                                     |        |                                    |                     |